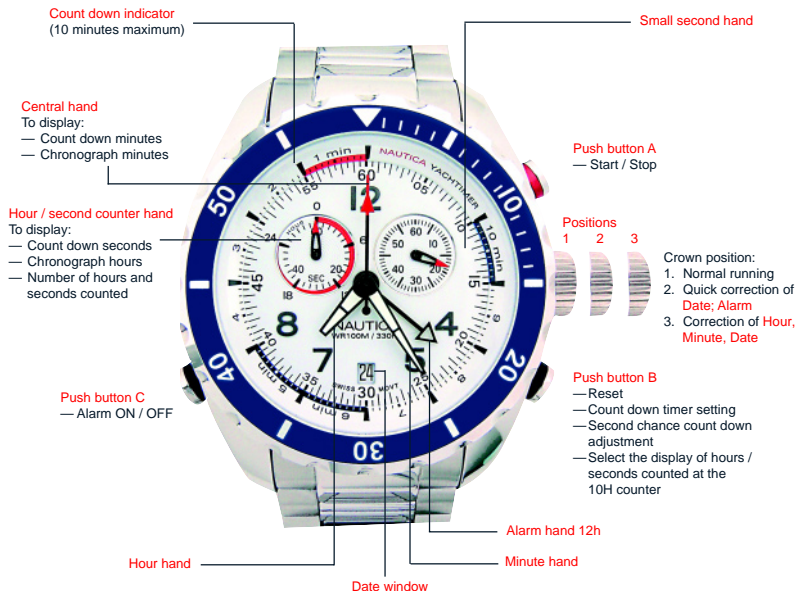


YACHTIMER

General Setting

Count Down Function

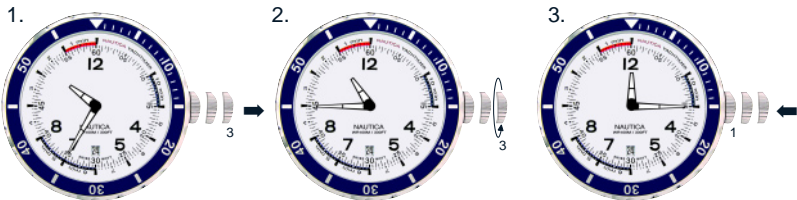
Chronograph Function



Attention:

The measurement of time starts by the count down, then followed by the chronograph.

A. SET THE TIME - HOUR, MINUTE, DATE

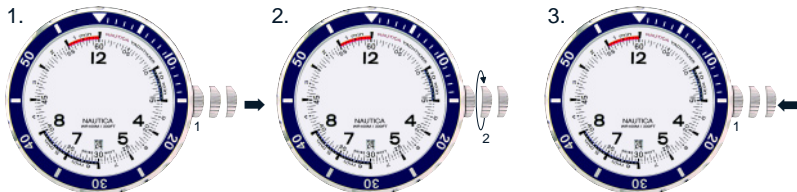


1. Pull the crown to position 3.
2. Turn the crown anti-clockwise to set the time of the day (hour & minute) and the date.
3. Push the crown to position 1.

Attention:

- * The date changes at 00:00midnight, not at 12:00noon.
- * Make sure that the AM/PM is set correctly, or the date will not change correctly.

B. SET THE DATE (QUICK CORRECTION)



1. Pull the crown to position 2.
2. Turn the crown clockwise to move the date to the desired position.
3. Push the crown to position 1.

Attention:

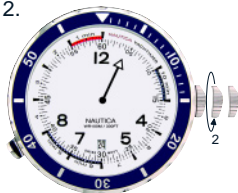
* Do not do quick date correction between 21:00 and 00:30.

C. SET THE ALARM (12h)

1.



2.



3.



1. Pull the crown to position 2.
2. Turn the crown anti-clockwise to set the alarm hand to the desired alarm time.
3. Push the crown to position 1.

GENERAL SETTING

D. ALARM ON / OFF

1. Press C to activate the alarm, 2 beeps emit.
2. Press C again to deactivate the alarm, 1 beep emits.

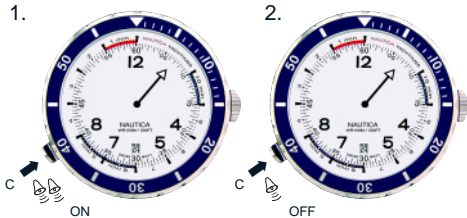
Alarm repetition:

If the alarm is not turned “OFF” during the first ringing, a repetition alarm will ring in 2 minutes. (Info: duration of alarm ~ 15 seconds).

If the alarm time coincides with the count down beepers, the alarm function will be cancelled automatically.

E. END OF LIFE (EOL)

When low battery is detected, this movement is equipped with the EOL function to alert the user. This can be visualized by the small second hand (at 2H counter) which advances 4 steps every 4 seconds.



F. TO SET THE COUNT DOWN

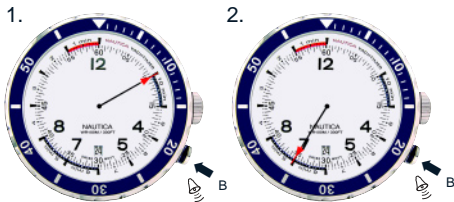
The count down timer allows the user to choose the time to be counted down up to the start of chronograph. The user can set the count down duration between 10 minutes and 1 minute. Adjustment of count down is not allowed during the last minute.

Attention:

Count down timer can be set only when the count down or chronograph functions have been reset (please refer to "L.Count down / Chronograph Reset").

TO SET THE COUNT DOWN TIMER:

1. Press B for ~ 1 second to enter into the setting mode, 1 beep emits.
2. After 1 second, press B step-by-step to set the central hand in order to define the duration of count down.



Between the positions of 0 minute and 10 minutes, the central hand advances fast automatically to "10 min".

COUNT DOWN FUNCTION

Exit automatically from the setting mode if there has been no action on B for 3 seconds, 1 beep emits.

G. ACTIVATION OF COUNT DOWN

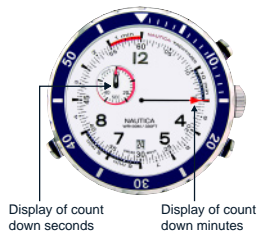
1.



2. Count down in progress ...



3.



1. Press A to activate the count down, 2 beeps emit.
2. The small counter hand at 10H turns fast to make a turn and stop shortly at "60", then count down starts.
3. When count down starts, the small counter hand at 10H indicates the seconds (1 step every 2 seconds); the central counter hand displays the minutes (1 step every 2.4 seconds).

H. COUNT DOWN PROGRESS BEEPER

Once count down is activated, there are beepers to communicate to the user about the progress of the count down.

1. During count down, 2 beeps emit every minute up to the last minute.

Then:

2. 50 seconds before the end of count down, 1 beep emits.
3. 40 seconds before the end of count down, 1 beep emits.
4. 30 seconds before the end of count down, 2 beeps emit.
5. 20 seconds before the end of count down, 2 beeps emit.
6. 10 seconds before the end of count down, 1 beep emits every second to indicate the end of count down.
7. At the end of count down, 1 long beep emits lasting for 1 second to communicate to the user that the count down reaches zero, and the chronograph function begins.

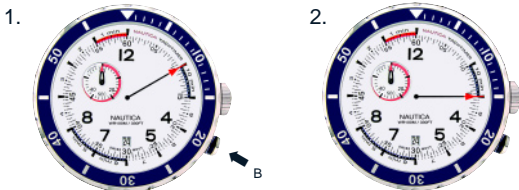


A long beep at
the end - 1

COUNT DOWN FUNCTION

I. "SECOND CHANCE" COUNT DOWN ADJUSTMENT

The user can at anytime during the count down period adjust the count down timer, except the last minute.



Example:

If the count down was set at 10 minutes at the beginning with delay:

1. The user can, during the count down runs, adjust it to 9 min. by pressing B.
2. The central minute chronograph hand will move from "10 min." to "9 min.". The small counter hand at 10H will advance fast to make a turn, and stops shortly at "60", then it continues to count and display the count down seconds.

Attention:

This function does not operate when the count down is set at 1 minute, or when the chronograph is in use.

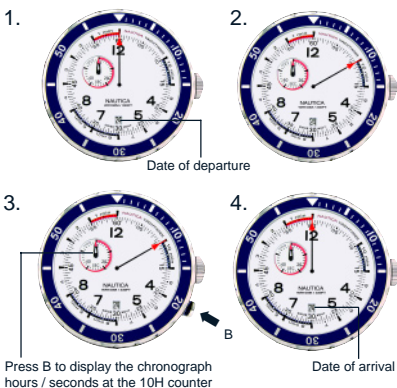
J. CHRONOGRAPH STARTS AUTOMATICALLY AFTER COUNT DOWN

1. When count down is finished, chronograph starts automatically.

2. The central minute counter hand displays the chronograph minutes (1 step every 12 seconds). The small hand at 10H counter display the chronograph hours from 0 hour to 24 hours, up to 96 hours maximum (1 step every hour). Between "24" and "0", the small counter hand advances fast.

3. Press B to display chronograph seconds at 10H counter. The display of chronograph seconds last for 1 minute at maximum (1 step every 2 seconds). During the display of chronograph seconds, another press on B can switch it to display chronograph hours.

4. The chronograph function allows the measurement of a duration of 96 hours at maximum (=4 days), then stops. At the end of the chronograph, the small counter hand at 10H will rest at "0", and the central hand will rest at "12".



CHRONOGRAPH FUNCTION

K. CHRONOGRAPH START/STOP



Stop:

1. Press A to stop the chronograph, 1 beep emits to confirm the chronograph "OFF".

Start:

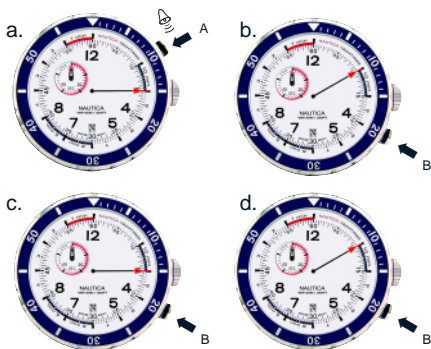
2. Press A again to start the chronograph function, 2 beeps emit to confirm that the chronograph is engaged "ON".

CHRONOGRAPH FUNCTION

L. COUNT DOWN / CHRONO-GRAPH RESET

Count down reset:

- Press A to stop the count down, 1 beep emits.
- Press B, the small counter hand at 10H is reset to zero ("60"), and the central hand returns to the previously set count down start time.



Chronograph reset:

- Press A to stop the chronograph, 1 beep emits. The small counter hand at 10H displays the counted hours, and the central hand displays the counted minutes.
- Press B, the small counter hand at 10H displays the counted seconds,
- Press B again, the small counter hand at 10H is reset to zero ("0"), and the central hand returns to the previously set count down start time.

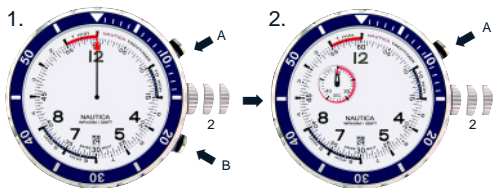
REINITIALIZING THE CHRONOGRAPH HANDS

(For reset only after battery change or mishandling)

Following a battery change, an incorrect actuation, violent impact or exposure to a strong magnetic field, the count down/chronograph counter hands may fail to revert to its original position (zero). To reinitialize the hands, proceed as follows:

Attention:

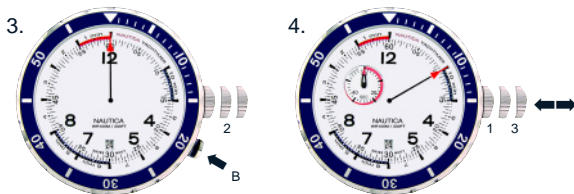
Initialization can be done only after having stopped and reset the count down or the chronograph. To reset, follow the step of “L. Count down / Chronograph Reset”.



Reset of the small counter hand at 10H:

1. Pull the crown to position 2, and let it stay for minimum 1 second. Press A or B, the central hand advances fast and stop (not necessarily pointing to “12”).
2. Press A step-by-step to adjust the small counter hand at 10H to rest at “0” (“60”).

REINITIALIZING THE CHRONOGRAPH HANDS



Reset of the central counter hand:

3. Press B step-by-step or constantly to adjust the central hand to rest at "12".
4. Exit from the mode of initialization automatically when the crown is pushed to position 1 or pulled to position 3. The central hand turns automatically and rests at "10 min." position, or at the position pre-set previously if the battery has not been changed.

BATTERY

Your timepiece may be powered by a Type 399 - SR 927W watch battery.

Dead batteries should be replaced immediately.