

ELECTRIC CLOCKS

SYNCHRONOUS

HAMMOND—PARIS ALARM

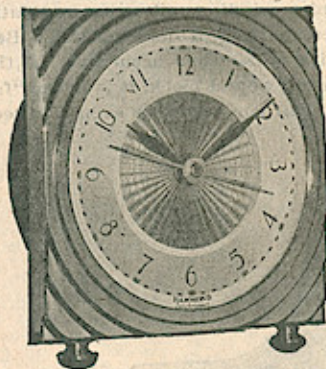


Case is made of walnut colored bakelite with a large clear dial, trimmed with a brass finish bezel. Buzzer alarm rings for a period of 45 minutes unless turned off by means of a control switch in the back of the clock. Size of clock 3 3/4 inches wide, 4 1/2 inches high. Diameter of dial, 3 inches. Each clock individually packed in a gift box.

No.	Wt. each	Each
Paris Alarm	2 lbs.....	*\$2.75

Six in a standard package.

HAMMOND—GLORIA ALARM

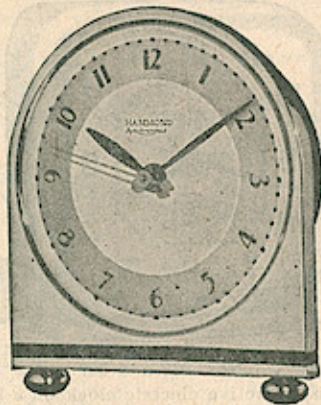


Boudoir clock with alarm attachment with rich chromium plate case, spun silver dial with an imitation cloisonne centerpiece in color. An artistic beautiful alarm clock that is most useful as well as an ornamental accessory in any boudoir. Height, 4 1/2 inches; diameter of dial, 3 1/2 inches. Each clock individually packed in a gift box.

No.	Wt. each	Each
Gloria Green	2 lbs.....	*\$6.50
Rose	2 lbs.....	* 6.50

Six in a standard package.

HAMMOND—POLO ALARM



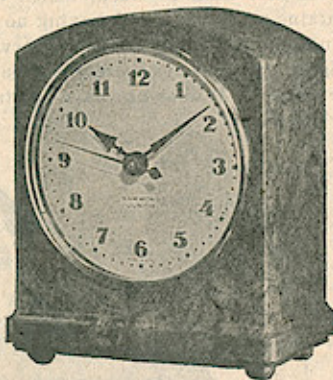
Case is chromium plate, trimmed in black enamel, with black enamel dial figures and hands. Hammond synchronous alarm movement. Height, 3 1/2 inches; diameter of dial, 4 1/4 inches. Each clock individually packed in gift box.

No.	Wt. each	Each
Polo Alarm	2 lbs.....	*\$6.50

Six in a standard package.

HAMMOND—FIREFLY ALARM

With illuminated dial.



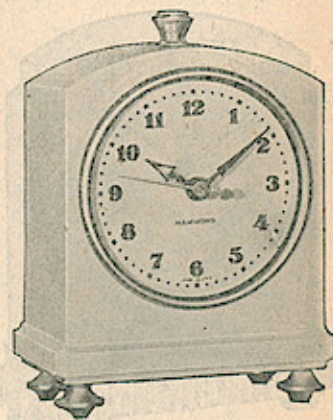
The standard Firefly model is known to a multitude of satisfied and enthusiastic owners. The dial is made of a translucent material. Behind it is a tiny lamp which illuminates the dial at night. Case, walnut colored bakelite which harmonizes with most bedroom furniture. Height, 5 inches; dial, 3 inches.

No.	Wt. each	Each
Firefly	2 lbs.....	*\$4.75

Six in a standard package.

*Suggested factory resale price.

HAMMOND—DE LUXE FIREFLY ALARM



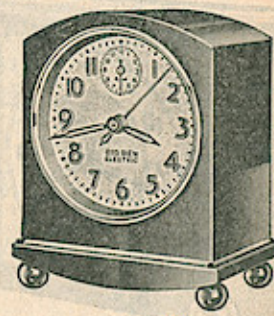
With illuminated dial.

Available in a choice of three-color combinations. The ivory model with gold finished feet and ornament, the green model with the gold finished trimmings—or the jet black model with the chromium plated fittings—three beautiful color combinations. Height, 5 1/4 inches; dial, 3 inches.

No.	Wt. each	Each
De Luxe Firefly Ivory	2 lbs....	*\$5.95
Green	2 lbs....	* 5.95
Black	2 lbs....	* 5.95

Six in a standard package.

WESTCLOX—BIG BEN ALARM



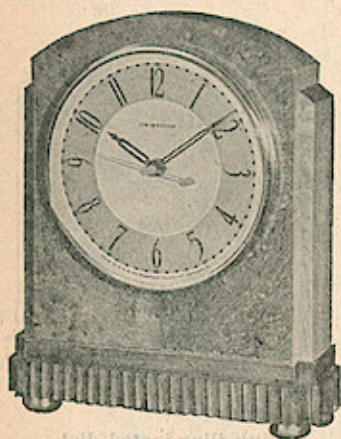
No. 820

Synchronous, self-starting motor, a Sangamo. Low speed type, 240 r.p.m. Insulated against noise. No winding, no oiling. Auxiliary key to demonstrate alarm. Clear toned bell alarm with convenient push-in shut-off. Chromium ball feet. Guaranteed two years. Height, 5 1/4 inches; width, 4 1/2 inches; depth, 2 1/2 inches; dial, 3 1/2 inches. Complete with cord and plug.

No.	Wt. each	Each
820 Plain dial	3 1/2 lbs....	*\$4.95
830 Luminous dial	3 1/2 lbs....	* 5.95

ELECTRIC CLOCKS
SYNCHRONOUS

HAMMOND—WINONA

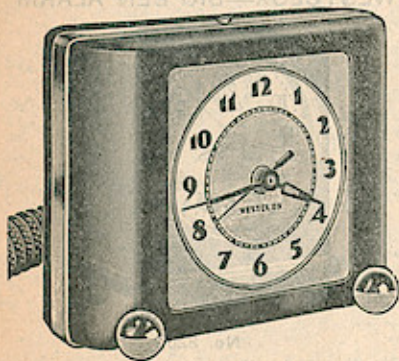


Mantel type clock patterned after the famous Glenmore Bichronous type clock which was received with great favor. Matched curly maple veneer front with brass feet, a fluted base and relieved dial. Height, 9 inches; width, 7 1/4 inches; dial, 5 inches.

No.	Wt. each	Each
Winona	4 3/4 lbs.....	*\$9.95

Five in a standard package.

WESTCLOX—BEN BOLT ALARM



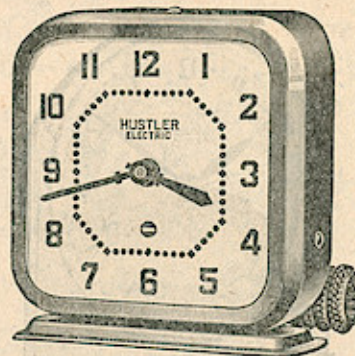
No. 828

A different model electric alarm clock, rich black with nickel trim. Modernistic design. Convex non-breakable crystal. Manual starting motor, forward motion only. Inside bell with lever shutoff. Alarm indicator on back of clock is legible and easy to set.

No.	Wt. each	Each
828	3 lbs.....	*\$2.95

One in a box.

WESTCLOX—HUSTLER ALARM



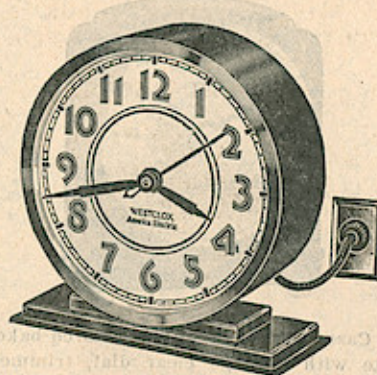
Nos. 806 and 807

An attractive electric clock on a base. Modern design of great value and exceptionally low priced. Made in two colors, green and blue. Convex crystal artistic dial with center minute circle. Alarm indicator on back. Inside buzzer alarm with convenient shutoff lever. Manual starting with forward motion only. Revolving disc to indicate clock is operating. Height, 4 1/2 inches; 3 1/2-inch dial.

No.	Color	Wt. each	Each
806	Blue	2 lbs.....	*\$2.20
807	Green	2 lbs.....	* 2.20

One in a box.

WESTCLOX—AMERICA ALARM



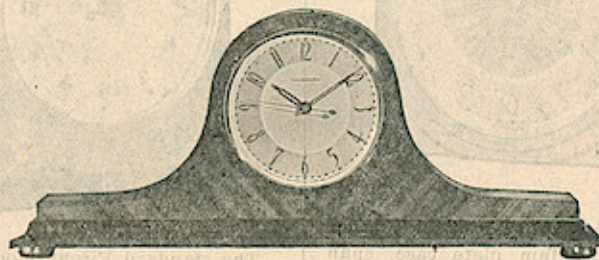
No. 812

This smartly styled low-priced clock is backed by the Westclox reputation. 4 1/2 inches high. Finished in black and nickel. Low speed manual starting motor.

No.	Wt. each	Each
812	1 1/2 lbs.....	*\$2.25

HAMMOND—LUVERNE

A new kind of clock, which does not require winding, oiling or regulating. Contains no springs, and having no mechanical escapement, it does not tick. Being regulated electrically it tells observatory time with split-second accuracy. Its time-keeping qualities are therefore superior to any spring wound clock, it is never "fast" nor "slow." It does not have to stand level, but will run perfectly even if tilted at any angle.



Tambour shaped mantel clock is presented here with a slightly different dress. It is thinner than the usual Tambour clock to make it adaptable to the smaller mantels now in vogue. The front is finished in a "V" matched walnut veneer and the base has an ebony black finish with brass feet. It has a hand-rubbed finish which gives it a richness and luster found only on higher priced clocks. The dial is artistic and is finished with a gold band. Height, 8 inches; base, 19 inches by 3 1/4 inches wide; dial, 5 1/2 inches.

No.	Wt. each	Each
Luverne	6 3/4 lbs.....	*\$9.95

Six in a standard package.

*Suggested factory resale price.

ELECTRIC CLOCKS

BICHRONOUS MODELS

THESE CLOCKS CONTINUE TO RUN WHEN THE CURRENT IS INTERRUPTED FOR A PERIOD OF FROM THIRTY TO FORTY-FIVE MINUTES, AND PICK UP AUTOMATICALLY WHEN THE CURRENT COMES ON.

HAMMOND—ARCADIA



A Bichronous (non-stop) Clock

Solid mahogany case. Small figured Carpathian Elm burl facing; top ornament syroco. Etched satin silver finish dial with gold finish circle. Size, $7\frac{1}{4} \times 5 \times 3$ inches. Diameter of dial, $3\frac{1}{2}$ inches.

No.	Wt. each	Each
Arcadia	$4\frac{3}{4}$ lbs.	*\$14.50

Five in a standard package.

HAMMOND—AVONDALE CALENDAR



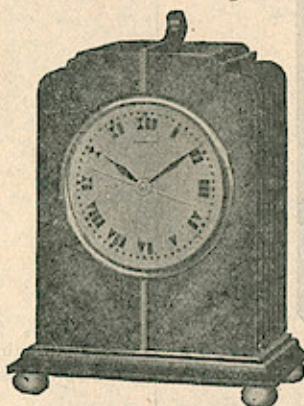
A Bichronous (non-stop) Clock

Tells the day and date as well as exact time. Choice of special walnut color bakelite with satin gold finish dial or black bakelite with satin silver finish dial. Size $7\frac{1}{2} \times 4\frac{1}{2} \times 3\frac{1}{2}$ inches. Diameter of dial, $3\frac{1}{2}$ inches.

No.	Finish	Wt. each	Each
Avondale	Black	$5\frac{1}{4}$ lbs.	*\$16.50
	Walnut	$5\frac{1}{4}$ lbs.	* 16.50

Five in a standard package.

HAMMOND—COLUMBIA



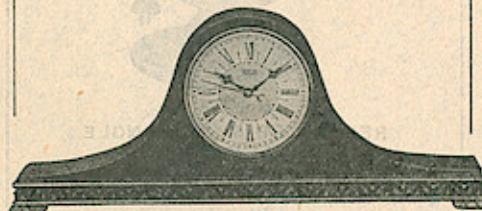
A Bichronous (non-stop) Clock

Case of solid mahogany with striped Vermillion veneer facing. Modern design; stripe, antique bronze finish; base, satin ebony color. Dial, satin gold finish. Size $7\frac{3}{4} \times 5\frac{3}{4} \times 3\frac{3}{4}$ inches; diameter of dial, $3\frac{1}{2}$ inches.

No.	Wt. each	Each
Columbia	$5\frac{1}{2}$ lbs.	*\$17.50

Five in a standard package.

HAMMOND—HAWTHORNE



A Bichronous (non-stop) Clock

A beautiful tambour model, case with Oriental striped mahogany veneer. Base is solid mahogany with carved moulding. Etched satin silver finish dial with gold finish center. Size $8\frac{1}{2} \times 19\frac{1}{2} \times 3\frac{3}{4}$ inches. Diameter of dial, 5 inches.

No.	Wt. each	Each
Hawthorne	$8\frac{1}{2}$ lbs.	*\$24.00

Three in a standard package.

*Suggested factory resale price.

HAMMOND—GLENMORA

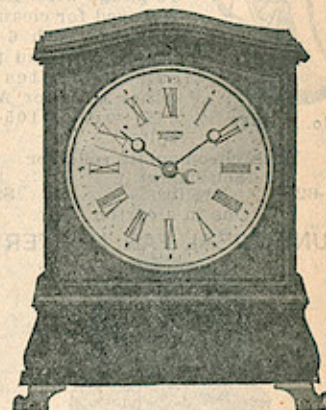


A Bichronous (non-stop) Clock

A modern mantel clock design. Case of solid walnut faced with selected Carpathian Elm burl overlay. Base is solid walnut with wood inlay. Dial, satin gold finish. Size $9\frac{3}{8} \times 7\frac{7}{8} \times 3\frac{1}{2}$ inches. Diameter of dial, 5 inches.

No.	Wt. each	Each
Glenmora	$7\frac{1}{4}$ lbs.	*\$25.00

HAMMOND—SHERWOOD



A Bichronous (non-stop) Clock

Colonial style with solid mahogany case; facing, select redwood burl, base, mahogany crotch veneer. Feet, antique bronze finish. Light buff dial. Size, $10 \times 8 \times 3\frac{3}{8}$ inches. Diameter of dial, 5 inches.

No.	Wt. each	Each
Sherwood	$7\frac{1}{2}$ lbs.	*\$27.50

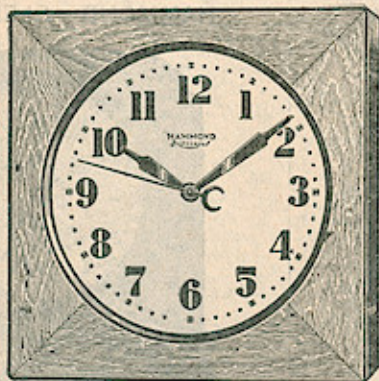
Three in a standard package.

ELECTRIC CLOCKS

HAMMOND
BICHRONOUS INDUSTRIAL MODELS

These clocks continue to run when the current is interrupted for a period of from thirty to forty-five minutes, and pick up automatically when the current comes on.

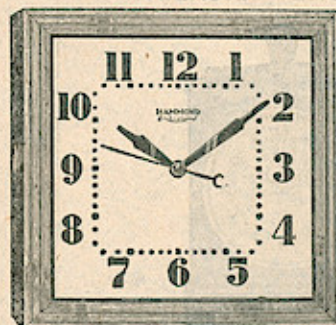
SENTINEL



Industrial model, mahogany case. Over all size, 18 3/4 x 18 3/4 x 4 1/2 inches, with a dial 14 inches in diameter. Has clear black numerals, visible 150 feet.

No.	Wt. each	Each
Sentinel	22 lbs.*\$30.00

CLARION



Brown mahogany case. Over all size, 14 3/4 x 14 3/4 x 4 1/2 inches, with 12-inch square dial. Has clear black numerals.

No.	Wt. each	Each
Clarion	12 lbs.*\$22.50

ELECTRIC HEATERS

HANDY-HOT



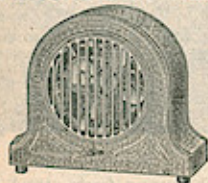
No. ZUB-62

10-inch chrome-plate colonial paneled reflector with two-tone jade green and black enamel cast metal base. Height over all, 14 inches. Protector guard made of 12-gauge wire. Easily removed for cleaning. Complete with 6-foot heater cord and plug cap. Operates on either D. C. or A. C. 645 watts, 105-115 volts.

With chromeplate reflector		
No.	Shipping wt.	Each
ZUB-62	3 1/2 lbs.\$2.00

One in a carton.

UNIVERSAL FAN HEATER

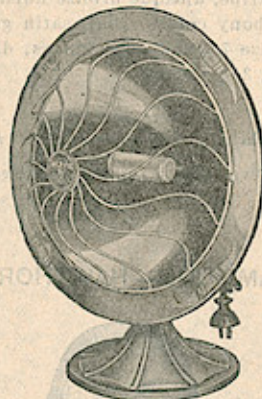


French green-gray enamel, moire finish, chromeplated guards. Non-radio interfering motor operates from floor outlet but not from lamp socket. Forces warm air into the room at the rate of 235 cubic feet per minute. Height, 9 3/4 inches; base, 11 1/2 inches wide, 4 1/2 inches deep. 1320 watts, 120 to 125 volts, A. C. only. Equipped with 8-foot durable green cord.

No.	Net wt.	Shipping wt.	Each
E-798	5 1/4 lbs.	8 3/4 lbs.\$7.95

One in a carton.

MAJESTIC



No. 455

REFLECTOR TYPE—SINGLE ELEMENT

11 1/2-inch chromeplate reflector with green back and base. Height over all, 16 inches. Reflector adjustable for reflecting heat in any desired direction. Heating element contains temperature of 2000° F. in two minutes. Element is fastened to lugs on inside of heat reflector with screws and is easily removed. Strong removable wire guard for element protection. Base is counter-weighted to cause heater to fall face up if accidentally overturned. Equipped with single heat element and 8-foot attached heater cord and attachment plug. 660 watts, 110 volts.

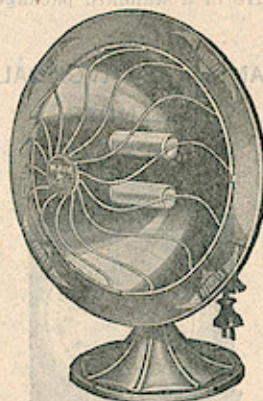
With chromeplate reflector		
No.	Shipping wt. each	Each
455	9 1/2 lbs.*\$3.95

One in a carton.

*Suggested factory resale price.

MAJESTIC

REFLECTOR TYPE—TWIN ELEMENT



No. 457

14 1/2-inch chromeplate reflector. Green back and base 19 1/2 inches high. Equipped with a cool convenient handle on back of reflector. Iron ornamental base is counter-weighted to cause it to fall face up if accidentally upset. Complete with 8-foot permanently attached heater cord and plug. Not adaptable for securing current supply from ordinary fixture socket. 1000 watts, 110 volts.

With chromeplate reflector		
No.	Shipping wt. each	Each
457	12 1/2 lbs.*\$5.95

One in a carton.