

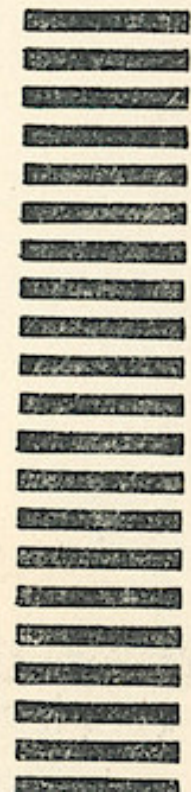
BUSINESS REPLY ENVELOPE
FIRST CLASS PERMIT NO. 10354, (SEC. 510 P. L. & R.) CHICAGO, ILL.

RADOLEK COMPANY

Randolph at Jefferson Street

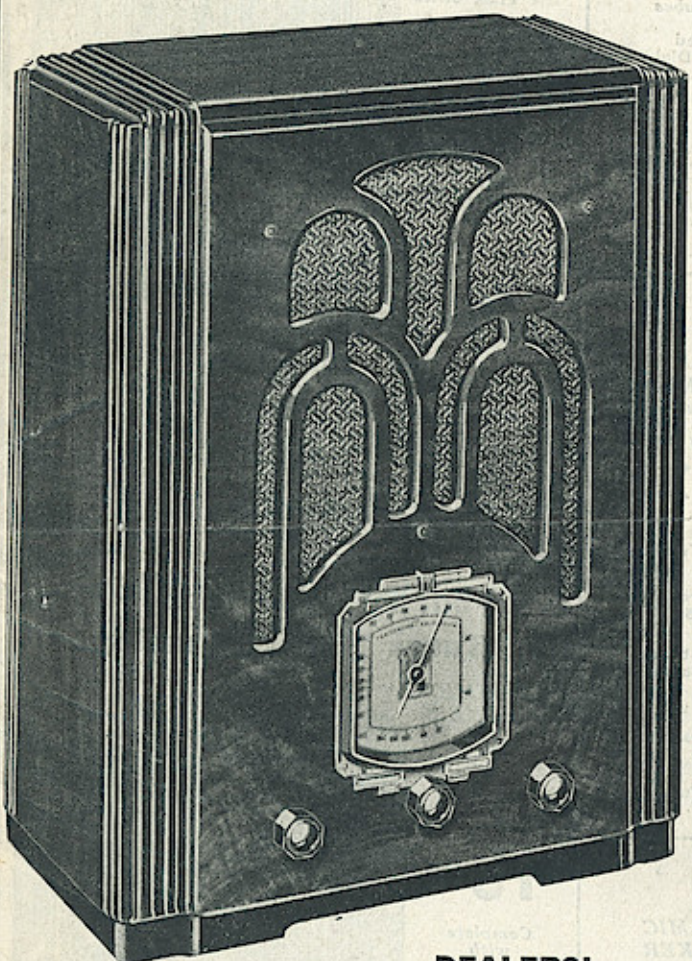
Canal Station

Chicago, Illinois



OVER 100 OF THE GREATEST VALUES
 ... We've Ever Offered ... Priced Lower Than Low
RADIOS ... APPLIANCES ... CLOCKS
 ... Every One a Money Saver ... Here's No. 1

5 TUBE DUAL WAVE AC SUPERHET



- Tunes 110 to 550 Meters All on ONE Band
- Police Calls ... Amateurs ... Broadcast

Positively the greatest Radio "Buy" ever offered. Never before have you been able to secure so much Radio Value for so little money! Incorporates every needed and desirable feature that you will find in receivers selling for double this price . . . and your price is extremely low, only \$14.95 . . . Your customers will be quick to buy this marvelous new Radio when they see all of its many advantages. Long Range Broadcast reception, Short Wave, Police Calls, Amateurs, at their finger tips—clear reception, beautiful tone, attractive appearance, unmatched low price—of course your customers will want this Super-Value.

Beautiful Cabinet

A cabinet of pleasing modern streamline design. Walnut front panel is handsomely figured and hand-rubbed to a rich lustrous finish. Attractive two-toned fluted pilasters on each side of instrument panel and across ends of top. Sides and top are finished in a contrasting darker shade. Constructed for acoustical perfection as well as beauty. Rarely have we been able to offer you such an exceptional value with which to build up your sales. Size: 16 1/2" high, 13" wide, 7" deep.

BA11914
 PRICE
 Complete With Tubes **\$14.95**

DEALERS!

Cash in on the public demand for this sensationally low-priced, high quality receiver. Your customers need this receiver . . . they want this receiver . . . and you can make money by supplying it to them . . . At this low price you make big profits.

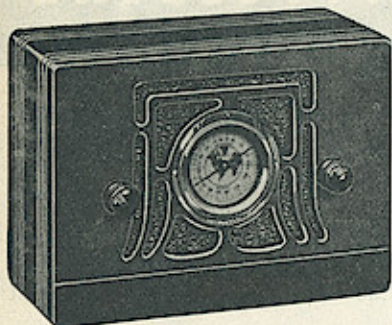
LOOK AT THESE FEATURES

CIRCUIT: Five tube high gain superheterodyne of new design, using the new dual purpose tubes, giving seven tube efficiency. Image rejector circuit eliminates harmonic interference. Has high sensitivity on low frequencies. Sensitivity better than 50 microvolts. Automatic Volume Control. Surgeproof electrolytics. Power output approximately 3 watts . . . **TUBES:** One 6A7 Detector-Oscillator, one 6D6 I. F. Amplifier, one 75 Second Detector—A.V.C. Amplifier, one 42 Pentode Power Output, one 80 Full Wave Rectifier . . . **SPEAKER:** New type, full tone, high fidelity powered 6" Dynamic Speaker. Sturdy steel frame—husky field coil. Scientifically baffled for perfect tone. No distortion on high or low frequencies. Tremendous power output . . . **CONTROLS:** Full control selector knob, smooth vernier tuning, 16 to 1 tuning ratio. Vernier drive free from back-lash. Tone Control . . . An outstanding feature of this Receiver is that it covers in ONE SINGLE BAND, without switching, a continuous range from 110 meters to 550 meters covering Amateurs, ALL Police Calls as well as extremely long range reception on the Standard American and Canadian Broadcast Bands.

Only
\$14.95
 Complete!
 with
TUBES!

Turn Page for Other Great Values →

Four Tube AC-DC Compact



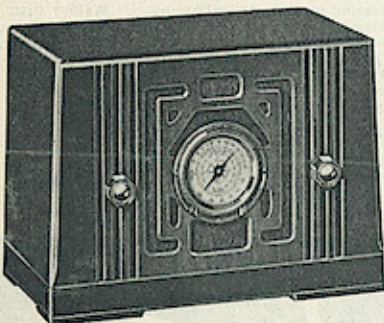
MAGNETIC SPEAKER
BA11900
List Price, \$15.00
YOUR SPECIAL PRICE
\$6.75

With Tubes

- Illuminated Airplane Dial
- Tunes from 175 to 545 meters (550 to 1750 kc.)

A small personal radio beautifully designed. For the home, office or traveling. Receives all regular broadcasts and in addition Police Calls down to 175 meters. Attractive cabinet, with polished walnut finish. Advanced circuit design. Multi-purpose tubes provide efficient operation. Five inch. fine quality magnetic speaker. Built-in antenna. Tubes used: 1-38, 1-76, 1-78, 1-6C6. Size, 9½" wide, 6½" high, 4½" deep. Weight 6 lbs. Operates on 110 V. D.C. or 110 V. 60 cycle current. R.C.A. and Hazeltine licensed.

Four Tube AC-DC Special



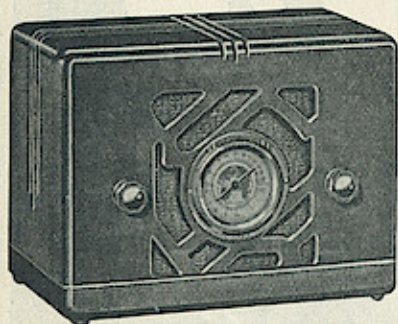
DYNAMIC SPEAKER
BA11901
List Price, \$17.50
YOUR LOW PRICE
\$7.25

With Tubes

- Airplane Dial
- Tunes from 175 to 550 Meters
- Receives Regular Broadcast and Police Calls

Priced to enable Radolek dealers to meet all competition. An unbeatable value for the price at which it is offered. Performs as good as any other receiver offered at the same price or even slightly higher prices. Not so good and not so bad but a lot more than you should expect for seven bucks. Two-tone walnut finished, well constructed cabinet of modern design. Receives regular broadcast and Police Calls down to 175 meters. High gain T.R.F. circuit. Five inch dynamic speaker. Built-in antenna. Tubes used: 1-32, 1-6C6, 1-0D6, 1-43. Size: width 10½", height 8", depth 6".

Four Tube AC-DC De Luxe

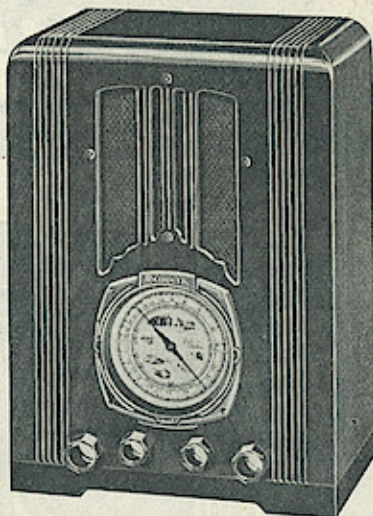


DYNAMIC SPEAKER
BA11902
List Price, \$21.00
YOUR PRICE
\$9.85

with Raytheon Tubes
In Lots of Three
Each \$9.60
• Illuminated Airplane Dial
Receives Regular Broadcast and Police Calls

A fine quality radio. Latest circuit design using multi-purpose tubes. Actually gives 6 tube performance. Delivers full volume and excellent clear tone. Receives regular broadcast and Police Calls down to 175 meters. Full five inch dynamic speaker. Built-in aerial. Modern two-toned walnut cabinet is sturdily constructed and beautifully finished. Attractive routing on top and sides. Dual illuminated peach colored dial scale. Tubes used: 1-0C6, 1-6D6, 1-43, 1-25Z5. Size: 10½" wide, 7¾" high, 6¾" deep. Operates on 110 V. D.C. or 110 V. 60 cycle current. R.C.A. and Hazeltine licensed.

De Luxe Dual Wave A. C.



- Tone Control
- Dynamic Speaker
- Two Bands
- Illuminated Airplane Dial

BA11904
List Price, \$27.50

YOUR PRICE,
\$12.95

Complete with Sylvania Tubes

- Tunes from 88 to 550 meters

Receives Regular Broadcast, Police Calls, Amateur and Aircraft Stations.

The finest four tube receiver with all the newest features. The handsome cabinet has all the grace and beauty that distinguishes fine furniture! Three contrasting shades of walnut are so arranged as to blend perfectly into a harmonious whole. The advanced circuit employs four high efficiency tubes and achieves greater power and better selectivity than many sets with even a greater number of tubes. Only the highest quality component parts are used. Both bands are calibrated on a single large 4½" illuminated airplane dial. One section is calibrated in kilocycles, from 1720 to 540 kc., the other section in megacycles, from 4 to 1.5 mc. Responsive excellent quality dynamic speaker. For operation on 105 to 120 volt 50-60 cycle current. R.C.A. and Hazeltine licensed.

Four Tube Dual Wave AC Tunes 75 to 555 meters

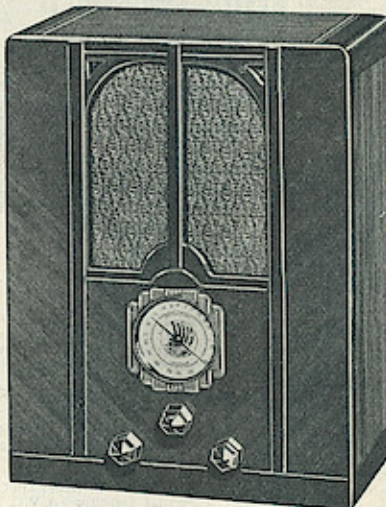
DYNAMIC SPEAKER

BA11903
List Price, \$24.50

YOUR SPECIAL PRICE,
\$10.75

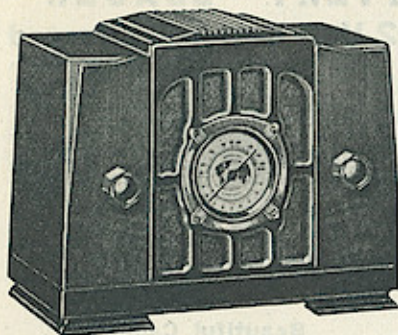
Complete with Raytheon Tubes

- Receives
- Regular Broadcast
 - Police Calls
 - Amateur Stations
 - Aircraft Stations



A low-priced radio set of quality construction and good performance. Excellent sensitivity and selectivity. Sweet natural tone and distance getting ability that will surprise you. A fine value but not quite as good as the De Luxe model above. Equipped with a 3" dual illuminated airplane dial calibrated in kilocycles for the broadcast band and in megacycles for the amateur band. High gain tubes used: 1-0D6, 1-6C6, 1-42, 1-60. Large 6" dynamic speaker delivers full volume and faithful reproduction. Table model cabinet has attractive front face of V-matched walnut, with matched walnut side panels. Size: 14" high, 10½" wide, 6½" deep. For operation from 105-120 volts, 50-60 cycle A.C. current. R.C.A. and Hazeltine licensed.

Five Tube AC-DC Special



**DYNAMIC
SPEAKER**

BA11905
YOUR LOW
PRICE.

\$8.95

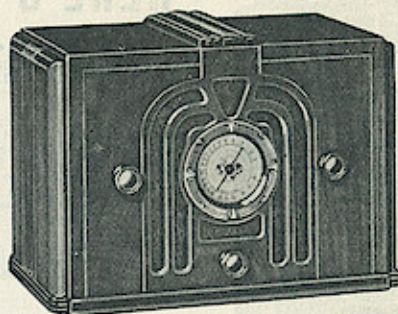
with Tubes

Tunes from 175
to 550 Meters

Dual Illuminated
Airplane Dial

We believe this receiver is of higher quality and will give better performance than similar radios offered at even higher prices. Receives all regular broadcast and Police Calls down to 175 meters. Pentode audio system delivers clear undistorted tone on speech and music. Full tone 5" dynamic speaker. Special high gain T.R.F. circuit. Built-in antenna. Handsome two-toned walnut cabinet is smartly modern in appearance. Colorful soft green glow dual illuminated airplane dial. Size 10" wide, 5" high, 6" deep. Tubes used: 1-6C5, 1-6D6, 1-50A2, 1-43, 1-25Z5. Operates on 110 V. D.C. or 110 V. 50-60 cycle current. R.C.A. and Hazeltine licensed.

5 Tube AC-DC Super Dual Wave



75 to 550
Meters

BA11909
YOUR PRICE.

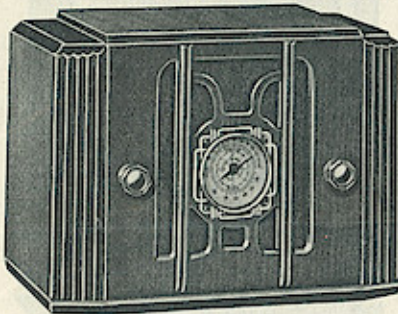
\$15.95

Complete with
Raytheon Tubes

- Superheterodyne Circuit
- Dual Illuminated Airplane Dial
- A.V.C.

Receives Amateurs, Airplanes, Police Calls, and Regular broadcast. An exceptionally powerful receiver. The superheterodyne circuit incorporates five of the latest type high gain tubes. Long Range of reception with natural, lifelike tone and great volume. Automatic Volume Control counteracts fading of distant stations. Large attractive cabinet with beautifully grained butt walnut front panel decorated with colorful marquetry inlay. Fluted sides finished in a contrasting darker shade. Entire cabinet hand-rubbed to a fine piano finish. Dual illuminated soft glowing green airplane dial. 5" dynamic speaker. Built-in antenna. Tubes used: 1-6A7, 1-6D6, 1-75, 1-43, 1-25Z5. Dimensions: Width 12 1/2", height 8 1/2", depth 7". For operation on 110 V. D.C. or 110 V. 50-60 cycle current. R.C.A. and Hazeltine licensed.

Five Tube AC-DC Dual Wave



75 to 550
Meters

BA11907
YOUR SPECIAL
PRICE.

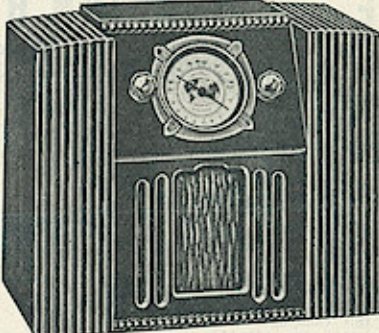
\$12.95

Complete with
Raytheon Tubes

Receives
Amateurs,
Airplanes,
Police Calls,
Broadcast

An A.C.-D.C. Receiver that combines fine radio reception with convenient portability. For 105-120 volt A.C. or D.C. The T.R.F. circuit incorporates the newest radio developments and five of the latest type high gain tubes. 5" dynamic speaker. Built-in antenna. Two pilot lights are employed and fully illuminate airplane dial with a pleasing green colored soft glow. Short-wave switch on back of cabinet. Beautiful cabinet, made of specially selected woods. Front panel of beautifully grained walnut and adorned with artistic fluted pilasters in a contrasting darker shade. Tubes used: 1-6C5, 1-6D6, 1-43, 2-12Z3. Dimensions: Width 11 1/2", height 8 1/2", depth 6". R.C.A. and Hazeltine licensed.

5 Metal Tubes AC-DC Dual Wave



75 to 550
Meters

BA11906
YOUR PRICE.

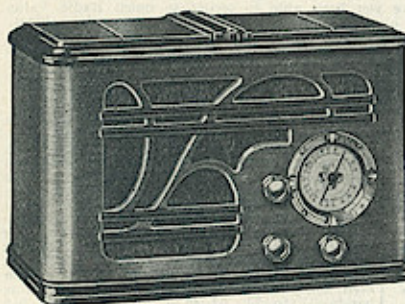
\$13.95

with Tubes

- New All-Metal Tubes
- Illuminated Airplane Dial

This distinctive radio is housed in a new and exclusive cabinet of individual design with new sloping control panel. Two tuning bands permit reception of amateur and airplane stations, police calls as well as regular broadcast. Band selector switch is on back of chassis. Full size 5" dynamic speaker delivers clear undistorted tone. Special high gain T.R.F. circuit uses five efficient new all-metal tubes. Built-in antenna. Litz wound coils. Tubes used: 1-6J7, 1-6K7, 1-M43, 1-M25Z5, 1-50A2. Operates on 110 V. D.C. or 105-120 V. 50-60 cycle current. Dimensions: Width 10", height 8 1/2", 5 1/2" deep. R.C.A. and Hazeltine licensed.

5 Tube AC-DC Super Dual Wave



75 to 550
Meters

BA11908
YOUR SPECIAL
PRICE.

\$16.95

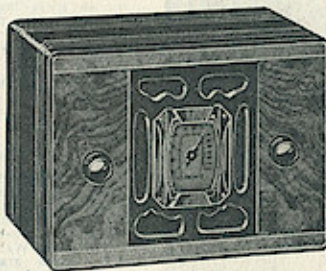
Complete with
Raytheon Tubes

Superheterodyne
Circuit

Dual Illuminated
Airplane Dial
A.V.C.

Here's new beauty and striking design in a compact! Beautiful combination of choice walnut woods make this cabinet a desirable possession in any home. Three contrasting shades of walnut are hand-rubbed to a rich soft finish. The colorful soft green glow of the illuminated airplane dial adds a touch of color to the ensemble. Receives short waves and regular broadcast. Improved superheterodyne circuit delivers clear, true tone. Responsive 5" dynamic speaker gives good volume. Automatic volume control counteracts fading of distant stations and blasting of locals. Built-in antenna. Tubes used: 1-6A7, 1-6D6, 1-75, 1-43, 1-25Z5. Operates on 110 V. D.C. or 105-120 V. 50-60 cycle current. R.C.A. and Hazeltine licensed. Cabinet dimensions: 9" high, 13 1/4" wide, 6 1/2" deep.

"The World's Smallest Radio"



Operates on 110 V.
AC or DC

Something New
Different . . .

BA11910
YOUR PRICE.

\$12.56

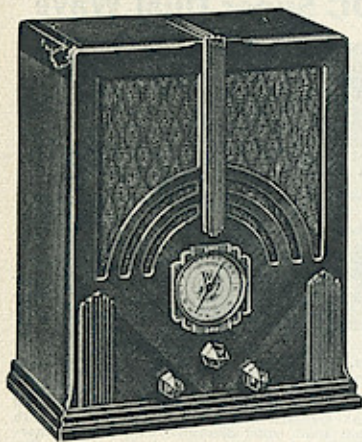
In Lots of Three
Each \$11.97

Complete with
Raytheon Tubes

- Dynamic Speaker
- Illuminated Airplane Dial

Five tube performance with the power and tone of a radio three times its size! Not a toy. Receives regular broadcast and Police Calls down to 175 meters. Full size 5" electro-dynamic speaker. Built-in antenna. Front and back of cabinet are identical in appearance and are of highly figured Italian olive wood polished to a piano finish. Scroll of grill, fluted sides and top are finished in a contrasting darker shade. Entire receiver is expertly and carefully made—uniquely and compactly designed—with the exclusive feature of all-around beauty. Improved high gain T.R.F. circuit uses 1-6D6, 1-6C5, 1-43 and 1-25Z5 types of tubes. Operates on any 110 volt current. Dimensions: 6" high, 8 1/2" wide, 4 1/2" deep. Can be held in the palm of your hand. R.C.A. and Hazeltine licensed.

Windows App : Images To PDF Maker



**HERE'S A REAL BATTERY "LEADER"
5 Tubes . . . Dual Wave 2 Volt Battery Operated**

A new, powerful, low-priced Battery Receiver giving remarkable Dual Wave reception with unusual operating economy. The "Leader" in Low Priced Battery Radios . . . from its selective true-toned chassis and speaker, to its beautiful Walnut cabinet, you'll find VALUE and PERFORMANCE unequalled by any battery set selling for less than \$40.00. Tunes 2 bands . . . 55 to 175 meters for Short Wave, Airplane and Police Calls. Covers 175 to 555 meters for long range Standard Broadcast reception. Equipped with the newest full-vision dual-illuminated Airplane Dial.

BA11935 5 Tube Table Model Complete with tubes. Less Batteries. List Price, \$37.95.

YOUR PRICE **\$16.45**

BA11936—Complete with tubes; one Ereready Air-Cell "A" Battery; 3-45 Volt "B" Batteries; one 4 1/2 Volt "C" Battery. List Price, \$47.65.

YOUR PRICE **\$22.75**

Uses newest low-draw 2-V. tubes in finest 5 tube Air Cell circuit. Powerful, clear-toned reception. "B" battery drain only 22 M.A.; "A" battery drain .56 amps. Full Automatic Volume Control assures noise-free reception with uniform volume on all stations. Rubber-cushioned tuning unit for sharp selectivity and stable performance. New IB5 triple-purpose tube adds extra tube efficiency; latest Class "B" 19 output stage produces tremendous volume which is easily handled by the husky 6-inch Orthovox speaker. Individual coils for each band assure utmost sensitivity and power. Furnished for Air Cell operation, but is also equipped with cord and built-in resistor for use on 3 Volt Dry "A" Pack.

Beautiful Cabinet

A sturdily constructed cabinet of new, pleasing design. The attractive front panel is of V-matched two-toned Walnut. The sides and top are of select Butt Walnut. Entire cabinet beautifully finished. Size: 13 1/2" high, 10 1/4" wide, 6 1/2" deep.

**A 6 TUBE A.C. "LEADER"
ALL WAVE . . . FOREIGN RECEPTION**

Greater volume, greater distance, better selectivity! Performance and appearance that will please the most careful buyer. Has EVERYTHING you need . . . will bring in EVERYTHING you want to hear. Tunes 3 bands . . . 17 to 555 meters. . . Has power to span continents and oceans . . . bringing you new, delightful programs from far-distant lands.

New Walnut Cabinet

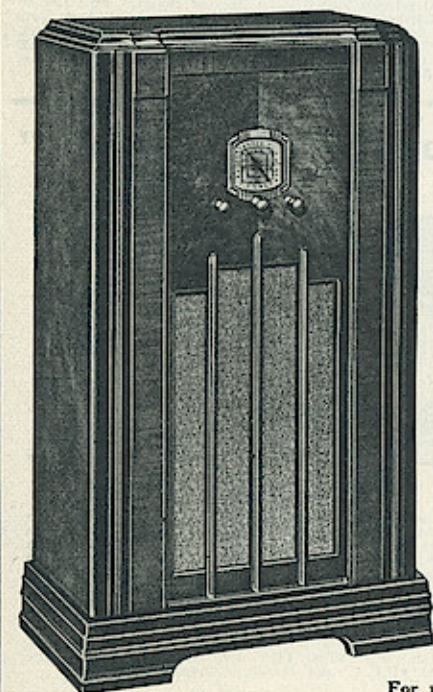
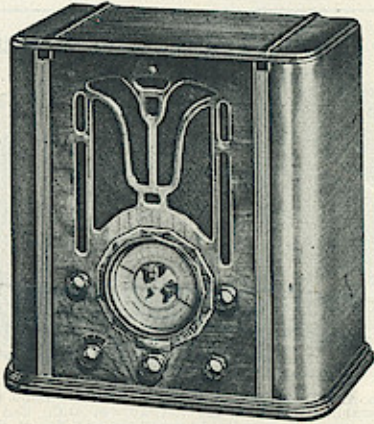
Finest quality genuine Walnut cabinet. Instrument panel is of beautifully figured Butt Walnut. Cross-fiber striped Walnut sides and curved front. Choice, straight grained Walnut top. Fluted overlays of contrasting darker shade on front and top. The hand-rubbed finish brings out perfect the sparkling beauty of this combination of selected rare woods. Size: 14" wide, 15 1/2" high, 9" deep.

**Specifications
For 105 to 120 Volt 50-60 Cycle
AC Operation**

All Wave Superheterodyne Circuit—employs six high efficiency tubes. Types used: 1-6A7, 1-6D6, 1-75, 1-76, 1-42, 1-80. Full Tone Control—permits personal interpretation of the broadcast. Automatic Volume Control counteracts fading of distant stations and blasting of locals. 6" Dynamic Speaker—full moving coil type, extremely responsive. Illuminated Airplane Dial—gold etched metal scales. Etched metal world revolves with pointer. R.C.A. and Hazeltine Licensed—all Radolek receivers incorporate the engineering developments that come from these great laboratories.

BA11932—List Price, \$49.50.

YOUR PRICE **\$19.95**



6 Tube Console "Leader"

. that Defeats All Competition

A 6 tube, 3 band, A.C. operated Console Receiver, incorporating all the newest Radio improvements, including 2 new Metal Tubes. Never before has such a sensational Console Value been offered to you. Never before have you been able to secure so much Radio Value for so little money. Here you have a fine quality Receiver in a full size Console cabinet, at the lowest price ever quoted. Actually outperforms many 8 to 10 tube sets—and looks better. Brings you thrilling Foreign Short-Wave reception, Amateurs and Police Calls. Amazingly long range reception on the Broadcast band . . . full volume and perfect tone.

Uses New All Metal Tubes

The receiver employs two of the new all-metal tubes in the circuit where their performance proved superior to the glass types.

Beautiful Console

A De Luxe Console Cabinet of striking appearance and exclusive design, combining quality with beauty, modern style and solid, substantial construction. Front panel is of beautifully figured matched Butt Walnut. Top is offset select grain Walnut. Vertical pilasters of Oriental cross grain woods. Attractive speaker grille backed with gold silk cloth. Fine, lustrous, brown Walnut, hand-rubbed finish. The large baffle area this console affords the dynamic speaker insures tone quality that is superb. Dimensions of cabinet: 36 1/2" high, 22" wide, 11 1/2" deep.

BA11933—6 Tube Console Complete with Tubes. List Price, \$52.50.

YOUR PRICE **\$27.50**

Specifications

Latest Superheterodyne Circuit uses two new All Metal tubes. New Antenna circuit. High Fidelity Audio Circuit, 3 Band Tuning with Six Tuned Circuits for each band which coupled with the use of a 3 gang variable condenser gives exceptional selectivity on both Broadcast and Short Wave. Illuminated airplane dial has an 8 to 1 vernier ratio. Husky dynamic speaker gives a sweet and natural tone over the entire audio frequency range. Improved Automatic Volume Control enables you to retain constant volume. Minimizes fading on even the most distant stations. Three tuning bands—17 to 51, 52 to 175, and 175 to 555 meters. By the use of dual purpose tubes this six tube set has the efficiency of the average eight tube set, insuring long range reception on all bands. Tubes are 1-6A7, 1-6D6, 1-42, 1-80, and 2 new metal tubes, types 6H6 and 6F5. R.C.A. and Hazeltine Licensed.

Your Radolek Profit Guide

—is crammed full of super values! See pages 1 to 164 . . . Everything in Radio and Public Address Equipment—at the Right Prices.

For use on 105-115 volt 50-60 cycle A.C.

THE RADOLEK COMPANY

Copyright 1936 by W. C. Brauns

5 TUBE AC DUAL WAVE

Superheterodyne — For 105-120 Volt 50-60 Cycle Operation

*Receives Amateurs
Airplanes, Police Calls
Standard Broadcast*

An exceptionally powerful Receiver that combines the highest type of fine radio reception with convenient portability. The Superheterodyne circuit incorporates the newest radio developments and five of the latest type high gain tubes. "Long Range" reception, with natural, life-like tone, and great volume. Many newest features which are usually found only in higher cost receivers are incorporated. Full range tone control allows changing of tonal pitch to suit your particular requirements. A snap of the switch changes from regular broadcast band to the interesting short waves. Dual wave tuning brings you countless short-wave thrills in addition to fine performance on the broadcast band. Tu-toned attractive Walnut cabinet with large illuminated 4" dial. Sides and top of clear, straight grain veneer. Rich gold speaker grille cloth. Dimensions: Height 14", width 11", depth 7 1/2".

SPECIFICATIONS

- Two Bands—Continuous band coverage from 70 to 550 meters.
- Superheterodyne Circuit—Employs five high gain tube tubes.
- Tubes used—1-6D6, 1-6A7, 1-76, 1-42, 1-80.
- Tone Control—Varies tone from brilliant to deep bass.
- Automatic Volume Control—Counteracts fading of distant stations and blasting of locals.
- Large 6" Dynamic Speaker—Extremely responsive and handles full room volume without distortion.
- Large Dual Illuminated Dial—With broadcast band calibrated in kilocycles and short-wave band in megacycles.
- R.C.A. and Hazeltine licensed.

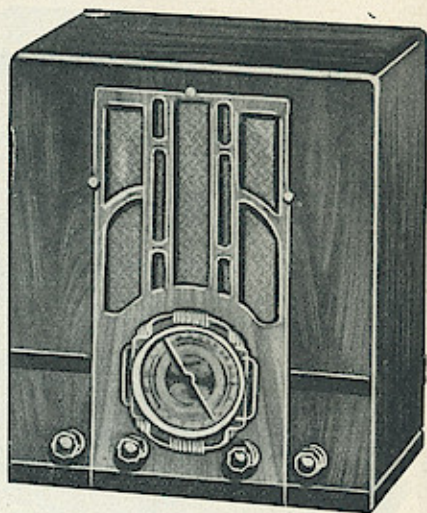
BA11911—Complete with tubes.

List Price,

\$32.50.

YOUR PRICE

\$13⁸⁵



5 TUBE A.C. ALL WAVE SUPER

Three Bands—19 to 565 Meters—Color Control

*Tunes Amateurs, Airplanes
Foreign Short Waves
Police Calls and
Domestic Broadcast*

A finely designed, well-constructed, 3 band Superheterodyne Receiver. Excellent tone, sharp selectivity, and extreme sensitivity. While priced low, set is quality built throughout, giving big set performance at small set cost.

Beautiful Cabinet and Dial

An attractive cabinet of simple and conservative design. Made of carefully selected, finely grained Walnut, front in a two-tone finish with handsome black inlay. Hand rubbed, soft brown, rich finish. Cabinet size 16" high, 11" wide, 8" deep. Large four inch airplane dial with separate color illumination for each wave band.

BA11912—List Price, \$35.00.

YOUR PRICE,

Complete With

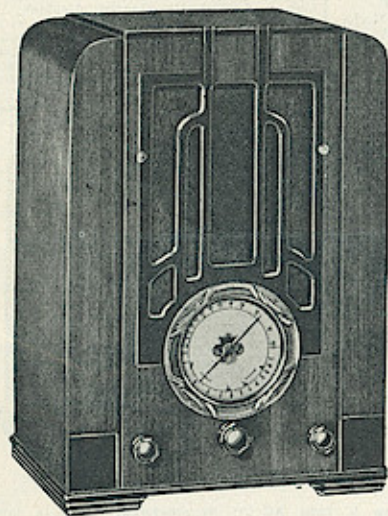
Raytheon Tubes

\$15⁷⁵

Specifications

*Operates on 105 to 120 Volt
50-60 Cycle A.C. Current*

- 3 Bands—Receives every important broadcast service.
- Superheterodyne Circuit — Employs five multi-purpose tubes. Pentode Audio. Ten tuned circuits.
- Tubes used—1-6A7, 1-75, 1-6D6, 1-42, 1-80.
- Automatic Volume Control—Permits silent tuning for locals and prevents fading of distant stations. Maintains constant uniform volume.
- Large 6 1/2" Dynamic Speaker—Delivers full output, clear and undistorted.
- Color Control—As band selector switch is turned, dial calibrations for each band are individually illuminated in amber, green and red colors.
- Full Floating Condenser—Tuning unit is fully cushioned on live rubber.
- Airplane Dial—Tuning ratio 14 to 1. Permits easy and accurate logging of stations. 3 tuning ranges clearly indicated on easy-to-read dial face.
- R.C.A. and Hazeltine Licensed.



DeLuxe 5 Tube All Wave Super

World Wide Reception

Operates on 105 to 120 Volt 50-60 Cycle A.C. Current

The "top" of the 5-tube class. This newly perfected All-Wave Superhet opens up a world of powerful and rich-toned radio entertainment. Exquisite grace and beauty distinguish the handsome table model cabinet. Front panel of gorgeous figured Burt Walnut, accentuated and made still more beautiful through the use of black and gold inlay. Slightly sloping sides and top finished in contrasting darker shade. Elegant hand-rubbed piano finish. Dimensions: 14 1/2" high, 13" wide, 8 1/2" deep.

Major Tuning Features

3 Band Tuning: 17 to 52, 52 to 175, 175 to 565 meters. Covers Foreign Stations, Amateurs, Police Calls, American and Canadian Broadcast. Illuminated Airplane Tuning Dial: With large, easy to read, well spaced numerals and 8 to 1 Geared-Ratio drive, for quick, accurate tuning. Tapered Volume Control: Even the strongest local stations easily controlled from lowest to highest volume. Automatic Volume Control: (A.V.C.) to counteract fading of distant stations and blasting of local stations. 3 Gang Condenser: Mounted on rubber.

Major Tone Features

Pentode Audio System: 3 watts Power output gives clear, natural, sweet tone. Fine Qual-

ity Electro-Dynamic 6" Speaker: Extremely Sensitive. Extra heavy construction of the cabinet and proper mounting of the speaker, produces tone quality far above the average.

Major Electrical Features

Balanced Superheterodyne Circuit: Six tuned circuits for each Band. Exceptional Sensitivity and Selectivity. More efficient operation. Lower noise level at same sensitivity. Non-Radiating: Built-in Filter prevents radiated interference from other nearby sets. Power Line Noise Rejector: Built-in Line Buffer keeps line noises out of radio. Five High Efficiency Tubes: 1-42, 1-6D6, 1-75, 1-6A7, 1-80, giving seven tube performance. Rigid Chassis Base: Provides a permanently rigid mounting for all units—perfect alignment of all parts. Completely Shielded: Both circuits and tubes metal shielded throughout to attain maximum amplification. Licensed by R.C.A. and Hazeltine.

BA11913—List Price, \$45.00.

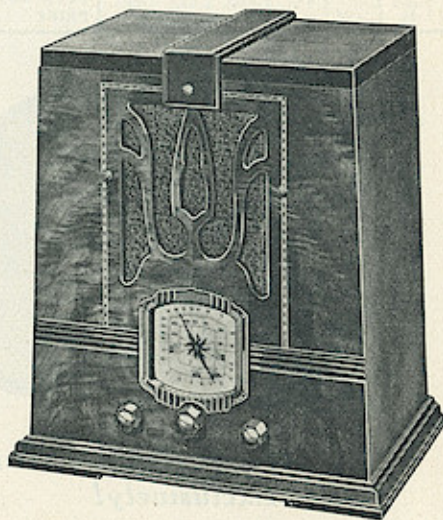
YOUR PRICE

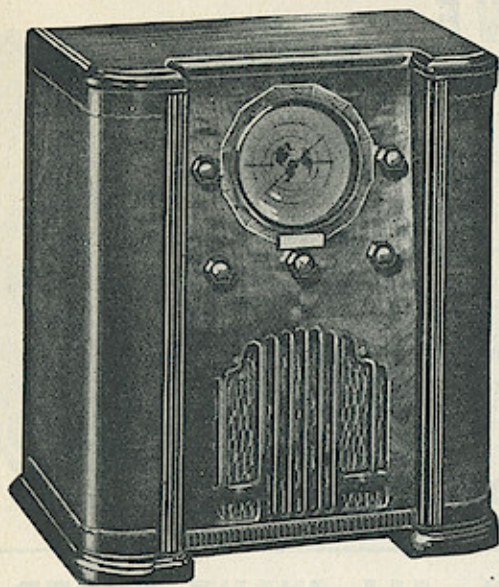
Complete with

Raytheon

Tubes

\$17⁷⁵





6 ALL METAL TUBES

8 Tube Performance!

A New All-Wave Receiver—a marvelous Table Model with Console performance and Console appearance at midset set cost. Bringing you radio's newest achievement—Metal Tubes—Great Power, Finest Tone Quality, Extreme Sensitivity, Precise Selectivity, Easy Tuning, Slipping Instrument Panel and Attractive Appearance are all combined in this Receiver, an Outstanding Value, not approached in any other High Quality set.

Tunes Three Continuous Wave Bands

Domestic Broadcast 172 to 565 meters—Amateurs, Airplanes, Police Calls 54 to 187 meters—Foreign Short Wave Stations 16 to 60 meters. Powerful special matched full 6" Dynamic Speaker, reproduces both voice and music with the greatest fidelity. Perfect balance of circuit and the use of quality materials throughout insure superlative results.

Superheterodyne Circuit

This new advanced Superhet circuit is designed to take advantage of the superior performance the new all metal tubes afford. Six high-gain tubes all functioning at peak efficiency, coupled with new special I. F. coils and a precision tuning condenser, brings extreme sensitivity and selectivity. Tube types: 1-6A8 Converter; 1-6K7 I. F. Amplifier; 1-6H6 Diode-Detector A.V.C.; 1-6F5 High-Mu Triode Audio; 1-6P6 Pentode Power Output; 1-5Z1 Rectifier.

Tone Control

Personal tastes in tone pitch can be given complete expression with the smooth tone control. Be your own orchestra leader. Adjust the radio to receive each program the way you like it.

Full A.V.C.

Automatic Volume Control counteracts fading and tends to maintain an even volume level irrespective of signal strength and distance of station.

Complete Receiver

BA10947—6 Tube DeLuxe Table Model. Complete with tubes. List Price, \$47.50.

YOUR PRICE..... **\$24⁷⁵**

Beautiful Walnut Cabinet

A Table Model Cabinet of Console design. Distinctly new—this unusual cabinet has individual character which places it far ahead of the average Table Model. Slanting instrument panel of rare Butt Walnut. Rounded corners and side panels are of gorgeously V-grained beautifully matched walnut with the top finished in a contrasting lighter shade. Lustrous hand-rubbed piano finish throughout. Cabinet Size: 11" wide, 9" deep, 17" high. Special Illuminated Airplane 5" Dial—with etched gold and silver scale adds additional beauty and greater tuning ease to this modern Receiver. You can rightfully be proud of this Distinctive Radio. . . . It's new . . . different . . . and decidedly better.

For Operation on 105 to 120 Volt
50-60 Cycle AC Current

6 TUBE AC-DC Dual Wave

Uses the New All Metal Tubes

A powerful 6 tube AC-DC DeLuxe Receiver for those who want something "better" in a small set. Combines the highest type of fine radio reception with beauty and convenient portability. A DeLuxe "Personal Receiver." Ideal for use as the principal receiver in the home or as a "second" or "Spare" radio for the Bedroom, Kitchen, Sun-Porch, or when Traveling. Tunes 2 separate bands. Gets Police Calls, Amateurs, Airplanes and standard American and Canadian Broadcasts. Incorporates the newest features and developments: Superheterodyne Circuit . . . uses two of the new all metal tubes and four of the latest type glass tubes . . . sweet natural tone . . . tremendous volume without distortion and exceptional distance getting ability that will surprise you.

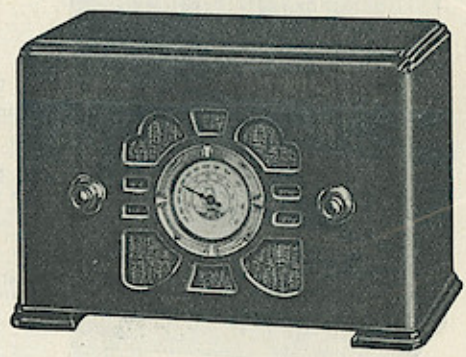
Points of Superiority

New All Metal Tubes—uses two. Superheterodyne Circuit—incorporates Automatic Volume control. Dual Illuminated Airplane Dial—separate calibrations for Standard Broadcast Band and Amateur and Police Band. Short Wave Switch—Separate coils for Amateur band with change switch on back of cabinet. Built-in Antenna—already attached to the receiver. R.C.A. and Hazeltine Licensed. Tubes Used—1-6A7, 1-6D6, 1-6H6, 1-6F5, 1-43, 1-25Z5.

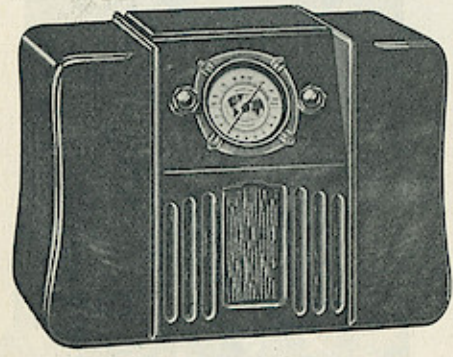
DeLuxe Model Compact

Genuine Walnut Cabinet in artistic modern design. Beautifully grained front and top of one piece striped walnut. Rounded corners. Hand-rubbed, set brown walnut finish. Cabinet size overall: 12½" wide, 8½" high, 7" deep. BA11930—6 Tube Superheterodyne Receiver. For Operation on 110 Volt A.C. or D.C. Complete with tubes. List Price, \$29.50.

YOUR LOW PRICE..... **\$17²⁵**



This new 6 Tube AC-DC Superheterodyne sets a new standard in AC-DC performance with its beautiful cabinet, remarkable pep and power, rich tone quality, and surprising distance getting ability. You will like its easy portability and big set result.



6 ALL METAL TUBES

Dual Wave Superhet

For 110 Volt AC or DC Operation

Here's a midset receiver of exceptional efficiency in an exquisite console type cabinet that is new, different and extraordinarily attractive. The 6 tube Superheterodyne is outstanding for its unusual sensitivity and selectivity permitting perfect reception of distant stations. Utilizes the new Metal Tubes with their advantages of increased stability and greater gain. Illuminated airplane type dial permits easier tuning. Sweet natural tone, with surprising volume for a set so small and compact. Makes a perfect radio—its distinction and beautiful appearance will grace any interior. The little receiver has everything—efficiency, appearance, full volume and tone—a really outstanding value. Cabinet Size: 12½" wide, 8½" high, 5½" deep.

Two Bands

Receives all Standard American and Canadian Broadcasts, Amateurs, Police calls, Airplanes and other Short Wave stations. Switch on the back of cabinet permits instant changing from Standard Broadcast to Short Wave.

BA11931—Receiver complete with 6 All-Metal tubes. For operation on both AC or DC current. List Price, \$39.50.

YOUR PRICE..... **\$18⁹⁵**

Points of Superiority

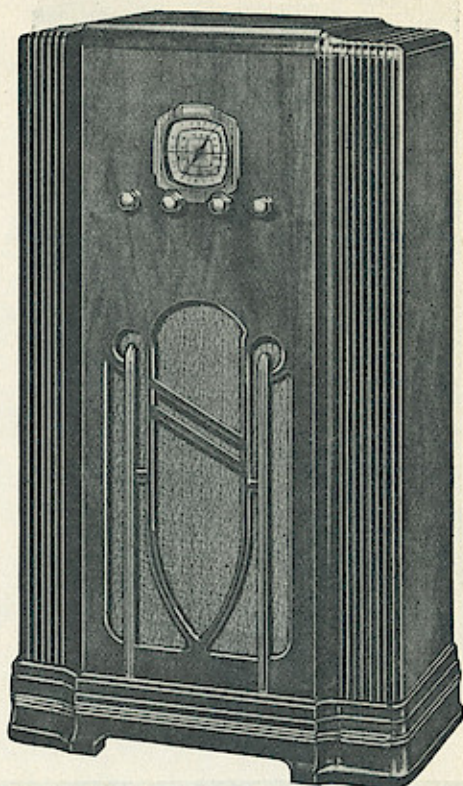
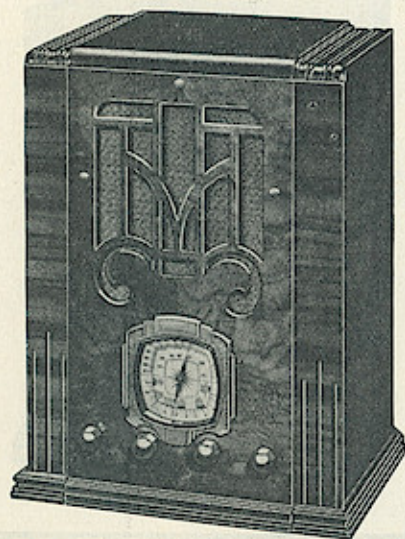
Superheterodyne Circuit—incorporates automatic volume control. Sensitivity—one microvolt per meter. 2 Bands—separate high gain Litz wound coils for each band. Airplane Dial—dual illuminated and mounted on inclined tuning panel. Dynamic Speaker—delivers full clear volume. Built-in Antenna—already attached to receiver. R.C.A. and Hazeltine Licensed. Six Multi-purpose, All Metal Tubes operating at peak efficiency brings performance far superior to the usual run of Table Receivers. Tubes: 1-6A8; 1-6B7; 1-6K7; 1M43; 1-M25Z5; 1-50A2.

Uses New All Metal Tubes
—Exclusively!

Windows App : Images To PDF Maker

DeLuxe PERFORMANCE and BEAUTY at Big Savings...

New All Metal Tubes



6 Tube DeLuxe with Radio Robot

Table Model

BA10943List \$55.50

\$24.95

Complete with Tubes

A DeLuxe Table Model Cabinet of striking appearance and exclusive design combining quality with beauty, modern style and solid substantial construction. Beautiful butt walnut overlay front and top. Striped Oriental walnut pilasters. Selected red gum sides. Rich gold silk grille cloth. Fine quality lacquer finish, hand-rubbed to a lustrous soft brown walnut shade. The full size illuminated Airplane Dial adds much to the overall attractiveness of this Receiver. Cabinet design is such that it harmonizes well with practically any type of home furnishings. Cabinet size: 17 $\frac{1}{2}$ " high, 13 $\frac{1}{2}$ " wide, 10 $\frac{1}{2}$ " deep.

Superhet Circuit

Newest High Gain tubes coupled with the new special pie-wound I. F. coils, a pre-selector circuit and a three gang, rubber-mounted tuning condenser, bring extreme sensitivity and selectivity. Six tuned circuits on short wave and seven on broadcast. 10 KC separation. Automatic Volume Control. Tubes used: 1-6A7 Detector-Oscillator; 1-6K7 I. F. Amplifier; 1-6C5 Diode-Detector A.V.C.; 1-75 High-Mu Triode Audio; 1-6F6 Pentode Power Output; 1-80 Rectifier. Licensed by R.C.A. and Hazeltine.

Foreign Reception Guaranteed

These radios will receive Foreign Stations when used with a modern antenna. See page 103 of your Radio-Log Profit Guide for a complete listing of aereals.

For 105-120 Volt, 50-60 Cycle AC Operation

FEATURES

- Tunes 3 bands, 17 to 51, 52 to 174 and 175 to 565 meters . . . *Foreign Reception*
- Automatic Volume Control . . . *Counteracts Fading . . . Low Noise Level*
- Tone Control . . . *Airplane Dial . . . Fully Illuminated . . . Easy to Tune*
- Radio Robot . . . *Metal Tubes . . . Superhet Circuit . . . Very Sensitive, Selective*

A 6 tube DeLuxe Superheterodyne Receiver incorporating every modern radio engineering development—including three new Metal Tubes. Great Power, Finest Tone Quality, Extreme Sensitivity, Precise Selectivity, Easy Tuning and Attractive Appearance are all combined in the Receiver. Outstanding Value, not approached in any other High Quality Set. High gain metal tubes provide performance in this Receiver, not attainable with lesser equipment. Tremendous Power and surprising Range—with unusual selectivity and splendid Tone. With just the snap of a switch you select from the Foreign Short Waves on the 17 to 52 meter band or American Amateurs, Airplanes, Commercials and the full range of Police Broadcasts on the 52 to 174 meter band or Regular American Broadcast on the 174 to 565 meter band.

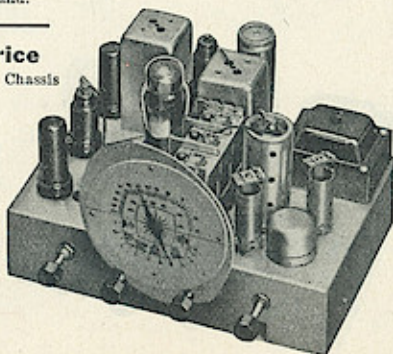
Chassis Price

BA10944—6 Tube Chassis with Dynamic Speaker, R.C.A. Tubes, Knobs and Escutcheon, 11 $\frac{1}{2}$ " wide, 7 $\frac{3}{4}$ " high.

List Price, \$49.50

Your Price

\$21.50



Console Model

BA10946List \$65.00

\$29.95

Complete with Tubes

Stately Walnut Cabinet

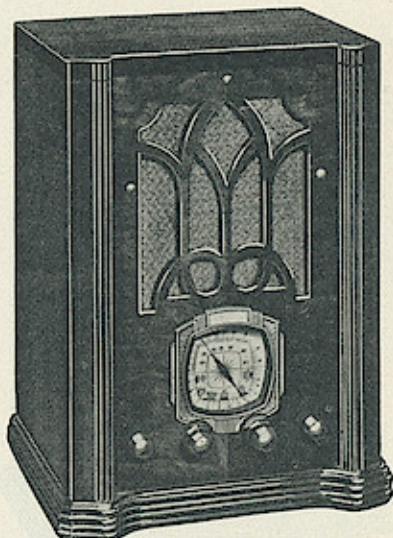
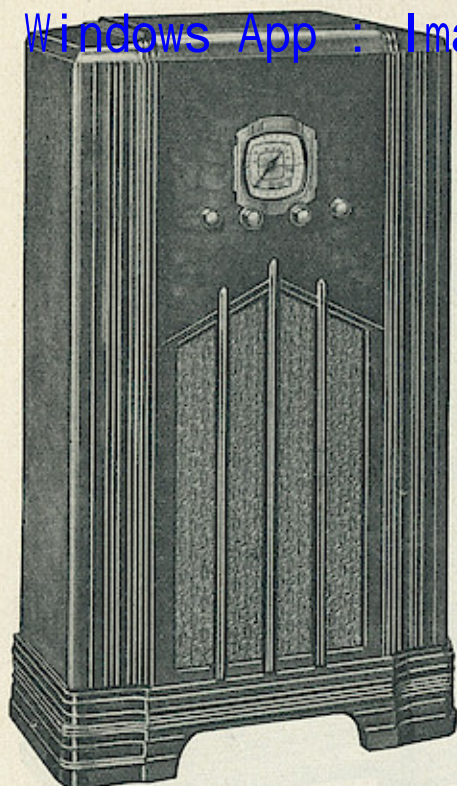
A superlative chassis and full toned Dynamic Speaker is installed in this attractive, modern genuine Walnut Console Cabinet. The extra baffle surface improves the tone to an astonishing degree, and the correct acoustic design brings out the beautiful rich tone qualities of this fine receiver. The plain, straight lines of the Console will blend with any style furnishings. Up-to-date—it combines quality, with beauty and modern style. The curved pilasters of genuine walnut, the offset top of burl walnut, the attractive butt walnut instrument panel, and the strong construction, are of a quality found only in the more expensive cabinets. All the beauty of the exquisite grain of natural walnut is retained in the soft brown hand-rubbed finish. Overall Dimensions, 35" H., 22 $\frac{1}{2}$ " W., 12 $\frac{1}{2}$ " D.

Radio Robot

Affords better reception. Contains the "heart" of the R.F. System—including all R.F. and Oscillator coils—all aligning condensers—a band selector switch and the Oscillator—1st Detector tube. Completely balanced and aligned before installation the Robot is again checked after connection. Mounted on its own separate chassis and incorporated in the larger receiver chassis, the Radio Robot brings you—12 MV per meter sensitivity—9KC selectivity—and remarkable low noise level.

TO TUBE PERFORMANCE
LOW COST DELUXE VALUE

Radio Robot



7 TUBE ALL WAVE SUPERHET

Console Model

BA10942.....List, \$75.00

\$37⁷⁵

Complete with Tubes

Super Performance

This bigger, better, more powerful 7 Tube Receiver, with its clearer tone and super-selectivity, gives you more enjoyable Short Wave and highest quality Broadcast Reception. Especially designed for those who want the best possible performance in a receiver and yet insist on the greatest value per dollar invested.

World-Wide Reception

Completely covers every type of radio program from 17 to 565 meters. Every point on the dial brings you powerful full-toned World-wide reception of Foreign stations, Amateurs, Aircraft and all Police Calls. Every new feature of proven worth has been incorporated to make this the finest and most powerful receiver.

Exquisite Walnut Cabinet

A fine quality Console sturdily constructed of beautiful, selected grain walnut. Front panel is of matched butt walnut with long graceful curved pilasters. Smooth finely grained curved edge top. Elegant hand-rubbed lustrous piano finish. The extra baffle area combined with the large 8" super Dynamic speaker provides full natural pleasing tone. The Modern Mode in Radio Furniture combined with skilled workmanship. Cabinet size: 37" high, 22" wide, 11 1/2" deep.

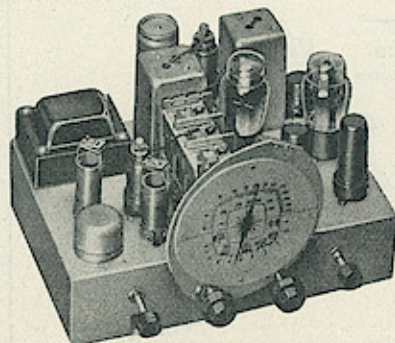
For Operation in 105-120 Volt 50-60 Cycle A.C.

FEATURES

- Tunes 3 bands: 17 to 51, 52 to 174, 175 to 565 meters . . . Superheterodyne Circuit.
- Foreign Reception Guaranteed . . . Tone Control . . . Illuminated Airplane Dial.
- Metal Tubes . . . Automatic Volume Control.
- Radio Robot . . . Unbreakable Dial Glass.

Superheterodyne Circuit

The new Superhet circuit is designed to take full advantage of all of the superior performance the Metal Tubes afford. Six High Gain tubes all functioning at peak efficiency coupled with the new special pie-weight lit IF coils, a pre-selector circuit and a three gang tuning condenser, bring extreme sensitivity and selectivity. Six tuned circuits on short wave and seven on broadcast. 10 KC separation. Tubes used: 1-6AS Detector-Oscillator; 1-6K7 I.F. Amplifier; 1-6HG Diode-Detector A.V.C.; 1-6A6 1st Audio and Phase Inverter; 2 6F6 Push-Pull Pentode Power Output; 1-80 Rectifier. Automatic Volume Control counteracts fading and eliminates blasting while tuning. Licensed by RCA and Hazeltine. FULLY ILLUMINATED AIRPLANE DIAL, large easy to read, enables anyone to tune easily and accurately. Upper scale is calibrated in kilocycles for scale broadcast tuning . . . lower scale is calibrated in megacycles for short wave tuning. Dial glass is new type, unbreakable. TONE CONTROL permits you to change tonal pitch to suit your individual taste.



Modernize Your Old Receiver

Chassis Price

BA10941 - 7 Tube Chassis with Dynamic Speaker, R.C.A. Tubes, Knobs and Escutcheon.

YOUR PRICE

\$26⁹⁵

Table Model

BA10940.....List \$62.50

\$29⁹⁵

Complete with Tubes

Beautiful Cabinet

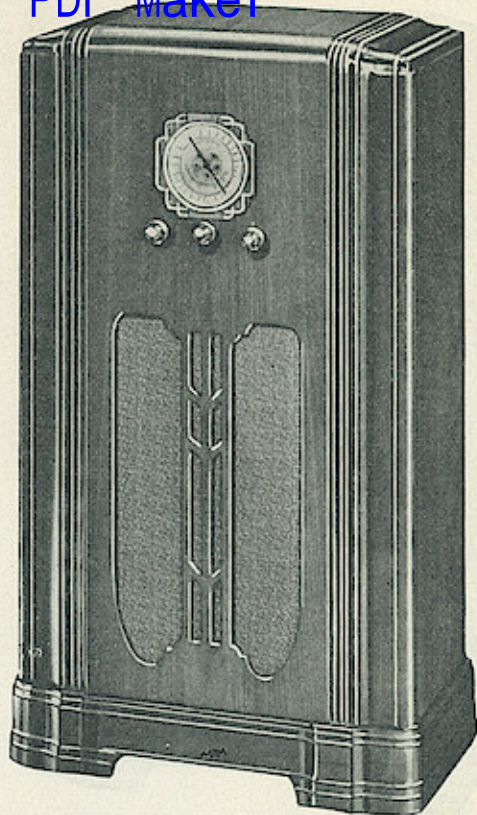
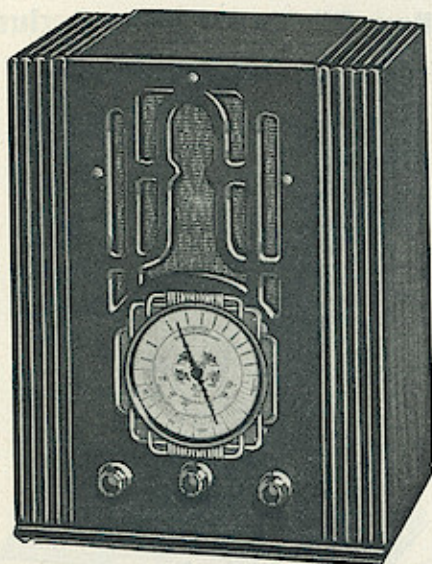
A distinctive Table Model Cabinet of rich, simple, modern design. No frills—all quality, strong, sturdy construction. Front panel is of highly figured genuine butt walnut. Two beaded pilasters and beaded base of new design give this cabinet a most pleasing effect. Top and sides of walnut with plain quartered grain. Rich soft brown lacquer, hand-rubbed to a lustrous piano finish. Cabinet size: 18" high, 13 1/2" wide, 10 1/2" deep.

Radio Robot

Insures better reception . . . contains the "heart" of the R. F. System—including all R. F. and Oscillator coils—all padding and all tuning condensers—the band selector switch and the dual purpose Oscillator and First Detector tube. Mounted on an individual chassis of its own, size 6"x4", it is easily detached from the main chassis, which makes possible greater sensitivity and selectivity—absolute uniformity—makes this Receiver 100% easier to service. The pre-selector stage simultaneously amplifies signals and reduces noise and interference. The multi-coil system provides a SEPARATE set of coils for each band. This "Robot" first is accurately aligned and balanced with laboratory precision instruments before installation in the chassis . . . Then after it is connected in the circuit it is again balanced to insure maximum sensitivity and selectivity on Broadcast and all Short Wave bands.

Battery Radios

Both Models Supplied for
2-Volt or 6-Volt Operation



7 TUBE ALL WAVE BATTERY SET

For 2 Volt Operation

For 2 volt operation of these receivers either a 2-volt storage cell, a 2-volt air cell, or a 3-volt Dry A pack is necessary. Automatic voltage regulation is accomplished by means of a ballast tube. In addition three 45-volt "B" batteries and one 2 1/2-volt tapped "C" battery are required. All of these batteries are listed on page 147 in your Radolek Catalog. Radolek offers you the lowest wholesale price on Eveready batteries.

Table Model

BA11915—For 2 Volt operation. Retail Value, \$48.50.

YOUR PRICE \$23.95

With Tubes but Less Batteries

Console Model

BA11916—For 2 Volt operation. Retail Value, \$65.50.

YOUR PRICE \$32.50

With Tubes but Less Batteries

Foreign Reception Guaranteed!

These Battery Radios are guaranteed to bring in foreign reception when weather conditions are favorable and when a modern antenna is used. A variety of efficient antennae are listed on page 103 of your 1936 Radolek Catalog.

World Wide Reception—3 Bands

Foreign Short Wave—Amateurs
American Broadcast—Police Calls
Airplanes—Other Short Wave Stations

Major Tone Features

Power Driven Audio System: Clear natural undistorted tone on speech and music. Power unequalled in battery sets. **Fine Quality 6 inch Permanent Magnet Speaker:** Extremely responsive. **Correct Baffle:** Extra heavy construction of cabinet and proper mounting of speaker, produces tone quality far above the average. **Live Rubber Tuning Condenser Mounting:** Full-Floating. Eliminates microphonic "squalls" and distortion.

Major Tuning Features

Tunes 3 Bands: 17 to 52; 52 to 175; 175 to 565 Meters. **Illuminated Airplane Tuning Dial:** With large, readable, well-spaced numerals for quick, accurate tuning. **Tapered Volume Control:** Even the strongest local stations can be tapered down to the desired volume. **Automatic Volume Control:** To counteract fading of distant stations and "blasting" of local stations.

Major Electrical Features

High Gain Superheterodyne Circuit—Exceptional Selectivity and Sensitivity. Six tuned circuits for each band. **7 High Efficiency Tubes:** Types 1-1G; 2-34; 1-30; 1-1B5; 1-19; 1-6-1 giving eight tube performance. **Low-drain tubes** assure most economical current consumption. Licensed by R.C.A. and Hazeltine.

Attractive Mantel and Console Cabinets

Front panel and top are of straight grained walnut with the sides and plasters finished in a contrasting darker tone. Graceful lines and the use of selected walnut, hand-rubbed to a soft velvety finish, make these cabinets superb creations. Dimensions of console: 37" high, 20 1/4" wide, 11 1/2" deep. Table Model: 15 1/2" high, 11 1/4" wide, 8 1/2" deep.

Chassis

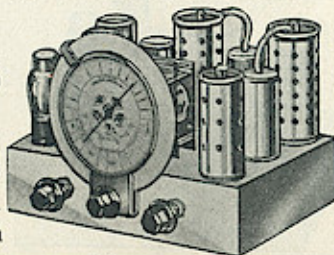
For 2 Volt Operation

BA11917
YOUR PRICE \$19.95

For 6 Volt Operation
Supplied With Power Pack

BA11920
YOUR PRICE \$24.75

Both models supplied complete with tubes, 6" P.M. Speaker, escutcheon, dial and knobs. Less batteries.



For 6 Volt Operation

For 6 volt operation of these receivers only one 6 volt battery is required. A storage battery is the most economical. The ordinary automobile storage battery will operate either one of these radio sets about 80 hours on one charge. A special power pack is supplied when the 6 volt model is ordered. It is necessary to make only two connections to any 6 volt battery and the receiver is ready to operate.

Table Model

BA11918—For 6 Volt operation. Retail Value, \$65.00.

YOUR PRICE \$29.50

With Tubes but less 6 volt Storage Battery

Console Model

BA11919—For 6 Volt operation. Retail Value, \$77.50.

YOUR PRICE \$37.75

With Tubes but less 6 Volt Storage Battery

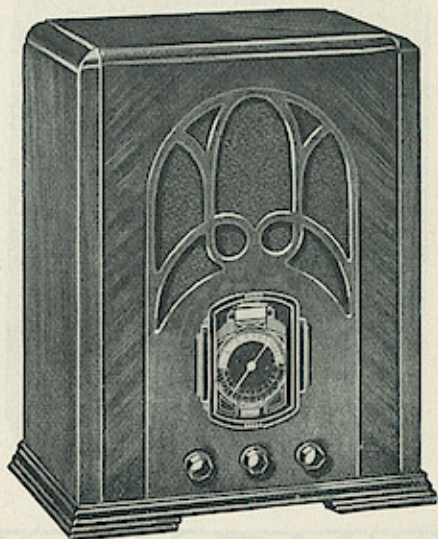
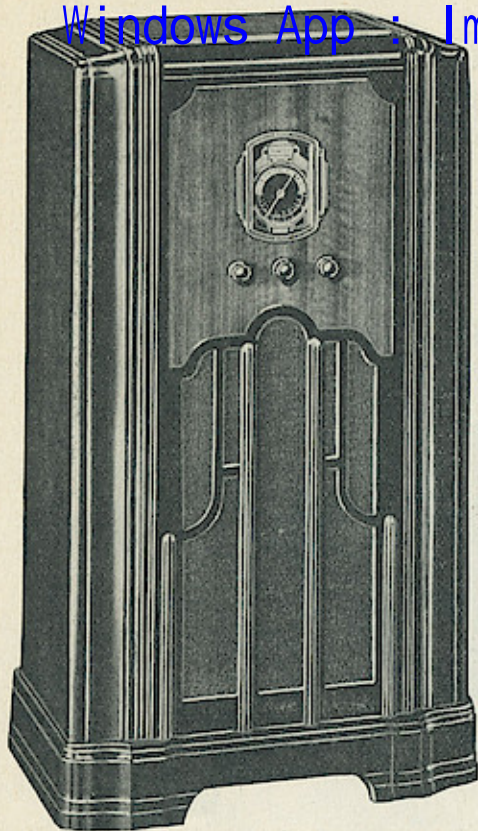
Lowest Drain On All Models

The use of the newest and most economical low-drain tubes assure the lowest possible current consumption. Real economy in operation. Current drain of the 6-volt models is only 1.5 amperes. Our 2-volt models the "A" battery drain is only 0.8 amperes and 19 M.A., "B" battery drain.

RADIO'S LATEST ACHIEVEMENT

World Wide Seven

Uses New All Metal Tubes Exclusively



ALL WAVE DE LUXE SUPERHET

Console Model

BA11922—List Price\$79.50

YOUR PRICE,

\$46⁷⁵

Complete with Tubes

A handsome console with all the grace and beauty that distinguishes fine furniture. The entire cabinet reveals painstaking care in design and construction. The extra large baffle and perfect acoustic qualities preserve and intensify the exquisite tone quality of the World Wide "Seven" Receiver. Center instrument panel and top are of satin-finished American Walnut. The gracefully curved pillars, sides and grille scroll are of Walnut finished in a contrasting darker shade. A lustrous elegant hand-rubbed piano finish brings out all the color and beauty of the natural wood grains. Rich gold silk grille cloth. Console size: 37" high, 21" wide, 11³/₄" deep.

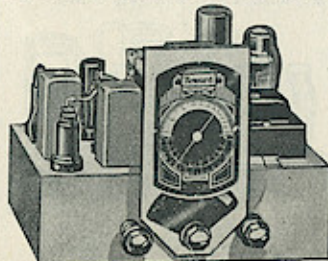
Illuminated Airplane Dial

Latest airplane type full-vision rectangular design dial is used in both console and table model receivers. Has three scales; top scale calibrated for regular broadcast. Lower two scales cover 17-55 and 55-157 meters marked in megacycles. Entire dial is completely illuminated by two pilot lights. Illuminated indicator on dial face shows which band is being tuned and is controlled by a smooth acting band-change switch. Dial face is finished in two-toned brown and harmonizes perfectly with the cabinets.

For operation from 150 to 120 volt, 50-60 cycle, A. C. current

The World Wide "Seven" was especially designed for those who want a finer, more beautiful, more distinctive radio receiver. Now you can enjoy super performance. Delight in the new brilliancy of tone, in the new and delicate sensitivity, in the greater distance getting ability that this receiver—the "top" of the seven-tube class—gives you. Both the table model and console cabinets are a triumph of the furniture designer's art. The effective handling of the various woods brings about a rarely beautiful and conservatively modern result that can be depended upon to harmonize in any surroundings.

- **World-Wide Range**—continuous coverage from 540 to 18,000 kilocycles. Gets foreign and American broadcast and short-wave stations, police calls, amateurs and airplanes.
- **7 All-Metal Tubes**—superheterodyne circuit is especially designed to use them to their full advantage. Two audio stages are used, insuring high gain and ample power output. Tube types: 2-6K7, 1-6AS, 1-6H6, 1-6F5, 1-6P5, 1-5Z4.
- **Uniform Sensitivity Over All Bands**—something engineers have been striving for since "all-wave" first began. A fractional micro-volt sensitivity is available on every band. Absolutely no "dead" or insensitive spots.
- **Selectivity**—ten kilocycle separation between stations permits easy tuning of distant stations without interference.
- **Powerful Output**—gives full 3 watts undistorted output. A husky 10" Concert Grand Dynamic speaker is used in the console model and a Concert 8" Dynamic speaker in the table model.
- **Tone Control**—permits either the bass or treble to be accentuated. Used also for noise reducing on foreign stations. Control knob is mounted on back of chassis.
- **Automatic Volume Control**—Eliminates inter-station noise when tuning and counteracts fading of distant stations. Assures fine tone quality even when volume is set unusually low.
- **Licensed**—under R. C. A., Hazeltine, La Tour and Howard patents.



Chassis Price

BA11923

\$36⁴⁶

Complete with seven all-metal tubes and a Concert Grand 10" Dynamic speaker. Escutcheon, dial assembly and knobs.

List Price\$62.00
Your Price\$36.46

Table Model

BA11921—List Price\$64.50

YOUR PRICE,

\$37⁹⁵

Complete with Tubes

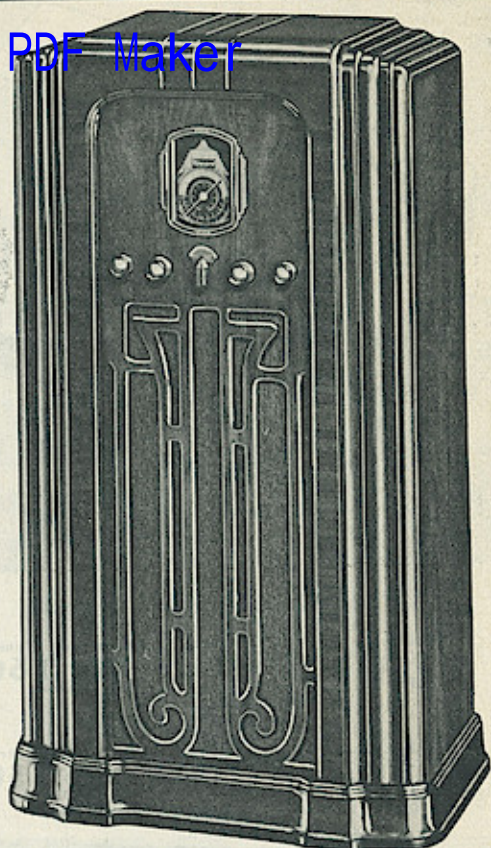
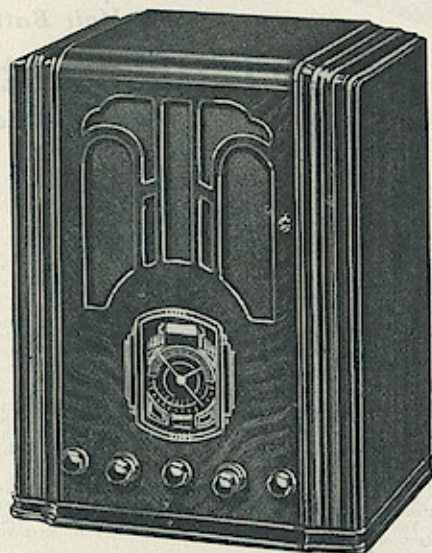
Here's dignity and good taste in a table model cabinet. A symphony in gorgeously grained Walnut—a superb cabinet creation! Top and sides are in a beautiful shade of medium Walnut tone, with the front face of the cabinet in a V-matched Walnut finished in a contrasting lighter shade. Entire cabinet is hand-rubbed to a rich lustrous finish. Dimensions: 18³/₄" high, 15" wide, 9¹/₂" deep.

Chassis Construction

The chassis for the World Wide "Seven" is one of the finest ever built! It was designed especially for 100% METAL TUBES. Has a superb circuit, AVC and Tone Control. The R. F. coil system is a unit assembled separately and held in place by four bolts so that it can be easily taken out of the chassis. Part of this unit is the efficient three-section band switch which allows the shortest possible leads to the coils—greatly increasing sensitivity. No better coil assembly can be built. All coils are oversize and wound on Bakelite forms. The three-gang variable condenser is individually floated on rubber. The power transformer operates much below its rating to insure its long life. Each part in the World Wide "Seven" is the finest obtainable.

Windows App : Images To PDF Maker

Finer than the Finest!
World-Wide ... Bandsread
"High Fidelity Nine"
Uses All Metal Tubes Exclusively



The Royalty of Modern Radio

Table Model

BA11924—List Price.....\$99.50

YOUR PRICE,

\$58.⁵⁰

Complete with Tubes

The large table model cabinet sets a new standard in fine radio furniture! Choice stump walnut with two-tone American walnut—graceful curving panels of contrasting grains—soft, hand-rubbed finish—all these combine to make this a cabinet of incomparable beauty. Dimensions: 19 $\frac{1}{4}$ " high, 14" wide, 10" deep.

The Finest Dial

Latest airplane type full-vision rectangular design dial is used in both console and table model receivers. Has three scales: top scale calibrated for regular broadcast. Lower two scales cover 17-55 and 55-157 meters marked in megacycles. Each band is completely illuminated as the smooth band-change switch is turned. Two section knob operates the Bandsread tuning device—front section has a 9 to 1 driving ratio for driving large hand on the dial to tune standard Broadcast—the back section gives an exceptionally slow spread ratio of 200 to 1 which also drives the "second" hand over a separate 360° scale "spreading out" the most crowded Short Wave bands for easy accurate tuning. Shadow tuning is incorporated in the top of the dial face. Dial face is finished in two-toned brown and harmonizes perfectly with the cabinet.

For Operation from 105 to 120 Volt 50-60 Cycle A.C. Current

- **World-Wide Range**—continuous coverage from 540 to 18,000 kilocycles. Gets foreign and American broadcast and short-wave stations, police calls, amateurs and airplanes.
- **9 All-Metal Tubes**—superheterodyne circuit is especially designed to use them to their full advantage. Two I.F. stages are used, insuring wonderful selectivity and sensitivity. Tube types: 3-6K7, 1-8AS, 1-6H6, 1-6C5, 2-6F6, 1-5Z4. R.C.A. licensed.
- **High Fidelity**—gives new beauty of tone, new depth of color. Uniform characteristics over practically the entire musical range (25 to 8000 cycles) assures the widest tonal range, the most faithful life-like reproduction ever achieved in radio.
- **Uniform Sensitivity over All Bands**—fractional micro-volt sensitivity on every band. Absolutely no "dead" spots.
- **Variable Selectivity Control**—permits broad tuning of local stations to enjoy the full range of musical response or knife-edge tuning-in of distant stations without interference. The selectivity with the high fidelity control on the sharp side runs ten kilocycles.
- **Band Spread Over All Bands**—makes a difficult Foreign short wave station actually spread out the equivalent of 30 kc. space on dial. Permits finer and more accurate adjustment.
- **Shadow Tuning**—an impressive type of visual tuning indicator. For perfect tone you must have perfect tuning. Accurate tuning by sight rather than depending on the human ear.
- **Powerful Output**—two tower tubes in push-pull give full 6 $\frac{1}{2}$ watts undistorted output. A husky 12" Concert Grand Dynamic speaker is used in the console model and a Concert 8" Dynamic speaker in the Table Model. Power enough for a dance hall.
- **Full Range Tone Control**—enables adjusting the radio to receive each program at its best. Permits brilliant, mellow, or normal tone. Used also for noise reducing on Foreign Stations.
- **Automatic Volume Control**—eliminates inter-station noise when tuning and counteracts fading on distant stations.

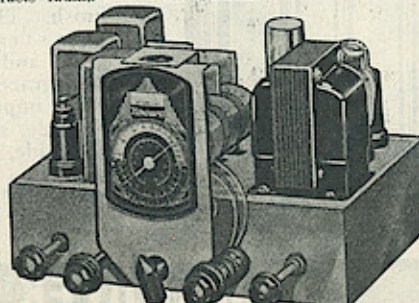
Chassis Price

BA11926

Complete with nine all-metal tubes and a Concert Grand 12" Dynamic speaker, Escutecheon, Dial assembly and knobs. List Price, \$104.50.

YOUR PRICE,

\$61.⁴⁵



Console Model

BA11925—List Price.....\$124.50

YOUR PRICE,

\$73.²⁵

Complete with Tubes

Designers, artists and cabinet makers have judged this as one of the handsomest consoles. It is a quality piece of furniture worthy of a place in the finest homes. The extra large baffle and perfect acoustic qualities preserve and intensify the exquisite tone qualities of the High Fidelity "Nine" Receiver. Center instrument panel and top are of large full grain Walnut. Sides are of American Walnut. The gracefully curved pilasters are of matched Butt Walnut. Instrument panel and sounding board are flanked by vertical columns of horizontal, striped Walnut in a contrasting lighter shade. A lustrous elegant hand rubbed piano finish brings out all the color and beauty of the natural wood grains. Rich gold silk grille cloth. Console size: 37" high, 24" wide, 11" deep.

Foreign Reception Guaranteed!

Either the console model or table model High Fidelity "Nine" receivers are guaranteed to bring in foreign reception when weather conditions are favorable and when a modern antenna is used. A variety of modern antennae are listed on page number 103 of your 1936 Radolek Profit Guide.

6 Tube THREE BATTERY

Operates on
6 Volt Battery

City Entertainment For Foreign Short Wave—Amateurs American Broadcast The Ideal Farm Receiver

The Newest, most Modern Battery Receiver for use where power current is not available. This 6-tube Three Band Superhet easily and economically brings to the Rural and Suburban Home, Summer Cottage and Isolated locations, every type of Radio Program that you could desire. Foreign Stations, American Broadcast, Amateurs, Airplanes and Police Calls. The most powerful, finest quality, Battery Operated Receiver ever offered at a reasonable price.

Equals or surpasses in performance the best A. C. operated receivers of similar design . . . and the purchase cost is surprisingly low for such performance and quality. The operating cost is very low—only a couple of dollars per year.

In this Receiver, Radio again offers you all its wonderful Magic in Entertainment. The highly efficient Superheterodyne Circuit using the new dual purpose high gain tubes gives you performance equal to other 8 and 9 tube receivers. Very Sensitive—gets distant stations with plenty of volume. Very selective—every wave channel is precisely separated. Easy to tune Short Waves. On the 17 to 51 meter band you get thrilling Foreign and Police Calls—the 175 to 565 meter band is the Standard Broadcast band affording you almost unlimited night-time and excellent daytime reception of American and Canadian Broadcasts—the world at your fingertips. You can be assured that in this Battery Receiver you will have the very best of Radio Reception.

No "B" or "C" Batteries Used

Operates directly from any 6-Volt Battery (Storage, Dry Cell or other type). "B" and "C" supply is obtained through a Full-Wave, Long Life Vibrator. Very low current drain—only 1.25 amperes, giving exceptionally long life to battery before recharging and extremely economical operation. New circuit design permits the use of 6 tubes—operating at about one-fourth the current consumption of most 4 or 5 tube receivers of similar design.

STATELY CONSOLE

This Beautiful 6 Tube Console Model is the ideal Battery Receiver for homes where no power electric current is available. The large baffle and 8" Orthovox Permanent Magnet Speaker provides a roundness and a fullness of tone, surpassing that obtainable in a smaller cabinet. Designed along tasteful conservative lines. . . . Sturdily constructed by skilled craftsmen. The front panel is of selected butt walnut, the sides are of straight grain walnut delicately shaded and hand-rubbed to a fine lustrous finish. The simple maple pilasters of contrasting grain, and the set-back top, add grace and beauty to this impressive Console. Console size: 36½" high, 22" wide, 11½" deep.

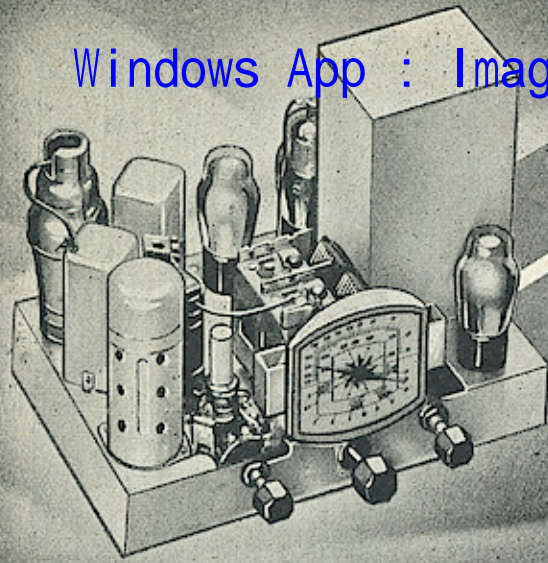
Major Tone Features

Pentode Audio System: Power Pentode. Clear natural undistorted tone on speech and music. Fine Quality 6 inch Permanent Magnet Speaker: Sturdily constructed. Correct Baffle: Extra heavy construction of cabinet, and proper mounting of the speaker, produces tone quality far above the average. Live Rubber Tuning Condenser Mounting: Full-Floating. Eliminates microphonic "squeals" and distortion.

Major Tuning Features

Tunes 3 Bands: 17 to 52; 52 to 175; 175 to 565 Meters. Gets Foreign Short Wave and Standard American Broadcasts. Extended Broadcast Band includes many Police and Amateur Stations. Illuminated Airplane Tuning Dial: With large, readable, well-spaced numerals for quick, accurate tuning. Geared—8 to 1 ratio drive. Tapered Volume Control: Even the strongest local stations can be tapered down to the desired volume. Automatic Volume Control: (A.V.C.) To counteract fading of distant stations and "blasting" of local stations. Also acts as static and noise suppressor.

BA10935—6 Tube 6 Volt Console complete with tubes. Less Battery List Price, \$59.50. YOUR PRICE **\$33⁹⁵**



6 Tube "Modernizing" Chassis

With 6" Orthovox Speaker

BA10934—6 Tube 6 Volt Chassis. Complete with Tubes, Speaker, Knobs, and Escutcheon. No Battery included. List Price, \$38.50. **\$22⁶⁰**

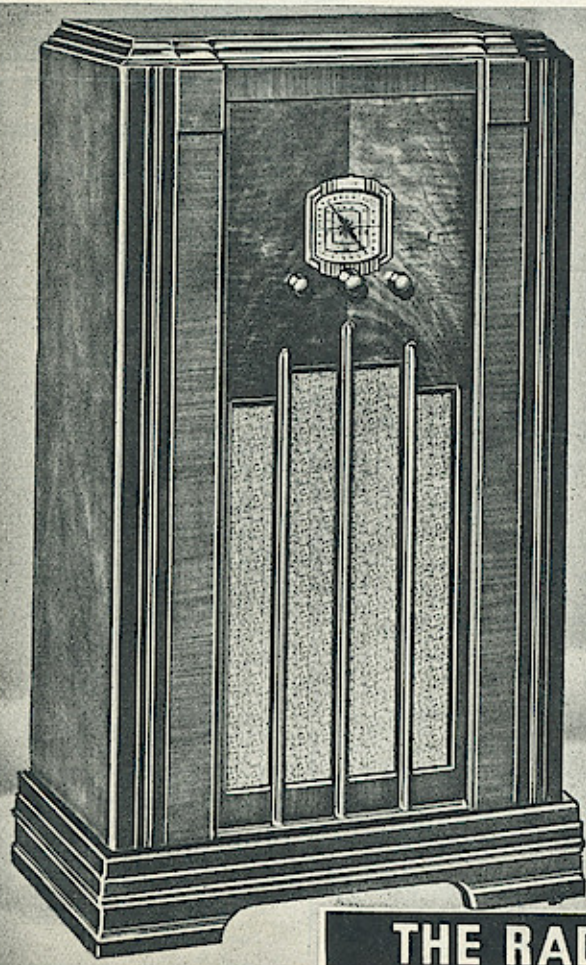
YOUR PRICE

With 8" Orthovox Speaker

BA10932—6 Tube 6 Volt Chassis. Complete with Tubes, Speaker, Knobs and Escutcheon. No Battery included. List price, \$42.50. **\$23⁵⁰**

YOUR PRICE

Chassis Size: 10¼" long, 8½" high, 6¾" deep.



THE RADLEK CO. CHICAGO, ILL.

THE RADLEK COMPANY

Copyright 1936 by W. C. Brann

BAND SUPER RECEIVER

No "B" Batteries Required

Rural Homes
Airplanes—Police Calls
Table Model
Beautiful Simple Cabinet

A modern up-to-the-minute 6-tube—6 Volt Table Model Radio. Operates on single 6 Volt Battery (Storage Dry Cell or other type.) Answers the need for efficient satisfactory radio reception in rural districts. Wonderfully economical in operation offering A.C. set convenience for the first time in a battery radio. Easy to install. Just connect it to any 6 volt battery. No resistors, no converters, no bother. Incorporates all the features described on these two facing pages. Performance is equal to the finest A.C. receivers of similar design. Foreign Reception with plenty of volume—Amateurs, Airplanes—Police Calls—American Broadcast—complete radio enjoyment. Modern attractive cabinet, sturdily constructed of choice genuine walnut. Front panel of rich butt walnut with genuine marquetry inlay. Slightly sloping sides, a Walnut overlay front and top cross moulding add grace and charm to this distinctive model. Smart speaker grille, back with gold silk grille cloth. Elegant handrubbed soft brown walnut piano finish. Cabinet Size: 14 1/2" high, 13" wide, 7 1/2" deep.

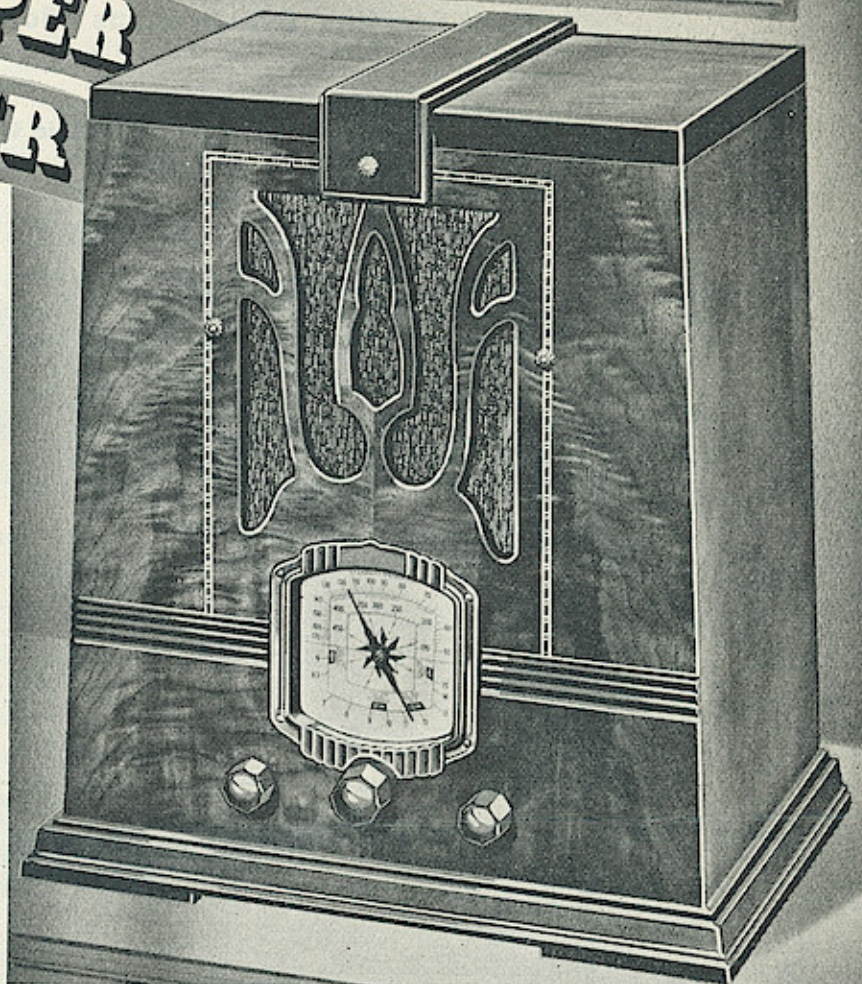
BA10936—Table model Receiver, Complete with R.C.A. Tubes.

List Price, \$42.50.

YOUR LOW

PRICE.....

\$24⁷⁵



TREMENDOUS POWER • PERFECT TONE

Very Economical to Operate

These Battery Receivers bring you A.C. Power Current Set Performance at lower operating cost than ever before. They are so designed that extremely low current consumption will insure a minimum operating expense and long battery life. The new circuit design incorporates six new type Low Drain Tubes—drawing only 1.25 amperes—which is only about one-fourth the battery consumption of most battery receivers of similar design. The Orthovox Speaker used with these receivers is a Permanent Magnet Type of Speaker requiring no field current, so consequently does not add an additional load on the battery to increase current consumption and shorten battery life. This receiver incorporates the newest most up-to-the-minute types of tubes yet devised for Battery Current operation. We feel confident that there will be no substantial improvements in this field for a year at least. So buy now with the full confidence that here is the best, most satisfactory Radio Receiver of this type available — far superior to anything previously offered.

Major Electrical Features

High Gain Superheterodyne Circuit—Exceptional Selectivity and Sensitivity. Six tuned circuits for each band. New type I.F. coils—More efficient operation. 6 High Efficiency R.C.A. Tubes: Types 1-10C; 1-34; 1-33; 2-30; 1-32 giving eight tube performance. Operates entirely from 6 volt current, Power Consumption only 1.25 amperes. Rigid Chassis Base—Provides a permanently rigid mounting for all units . . . perfect alignment of all parts. Rust-proof steel. Completely Shielded—Both Circuits and Tubes shielded throughout to attain maximum amplification and stability. Safe from Fire and Shock. Built to conform in every respect to the Underwriters' Safety Standards. Licensed by R.C.A. and Hazeltine.

These 6 Volt Receivers may be satisfactorily operated on 32 volts by using this special adapter. Complete with Instructions.

\$1⁵⁰

3A2498—YOUR LOW PRICE.....

No More Battery Troubles!

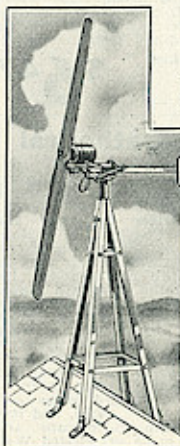
Pioneer Air-Flo Charger

Charges Batteries at No Cost

A Complete Wind Driven Generator

Eliminates troublesome and expensive battery recharging. Ideal for use with all Storage Battery Receivers shown in this book. Low initial cost and absolutely no expense to operate.

Supplies 6 volts at 5 amperes direct current to charge and keep charged 6 volt storage batteries. Also charges 2 volt batteries when used with special resistor listed below. An automatic cutout device on generator prevents overcharging and provides protection from excessive wind velocity. Scientifically curved propeller gives maximum r. p. m. at any wind velocity. Propeller is constructed of especially treated, oil impregnated, carefully selected wood. Entire assembly is completely weather-proofed. Operates at extremely low wind velocity. Can be mounted on barn or house roof and may be supported by the tower unit with which it is illustrated.



3A2499—2 volt Resistor for charging a 2 volt storage battery from the Windcharger line. YOUR PRICE.....55c

4A10143—Generator complete with ammeter, cutout relay, pipe fittings, clamps, battery clips and 50 ft. of No. 12 insulated copper wire. Complete instruction for operation and installation. Without steel mounting tower. **\$13⁹⁵**

4A10144—4 1/2 ft. Steel Tower only. YOUR PRICE..... **\$3.75**

THE RADOLEK CO. CHICAGO, ILLINOIS.

Ingraham Electric Clocks

Windows App : Images To PDF Maker

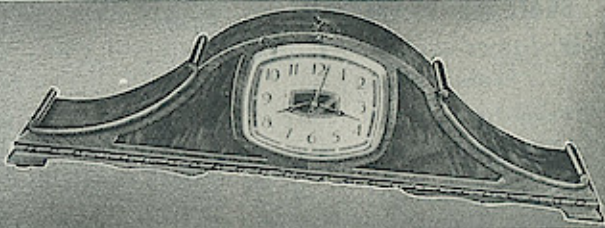
Self-Starting Synchronous Motors

Attractive, dependable, high quality electric clocks. Made by a manufacturer that has been recognized throughout the world, for over a century, as a maker of fine and accurate time pieces. Clock cases are all constructed of selected woods by master furniture craftsmen. The motors are a development of a long period of research and experimentation by experts in watch, clock and electrical engineering, and are unsurpassed by any clock motor produced today. Silent operation, long life and continuous automatic lubrication are insured by the motor design. No oiling or adjustments ever required. All the parts are built with the materials, design, and precision of a fine watch. Day after day, year after year, these clocks will remain accurate to the exact

second. The motor consumes an almost negligible amount of electricity. All models are Underwriters' Approved and fitted with 6 foot cords and plugs. For operation on 100 to 125 volt 50-60 cycle A.C. current.

Sell Electric Clocks—for Extra Profits!

Radio Servicemen and Radio Dealers increase your profits by selling many articles of merchandise outside of Radio. This fine quality, fully guaranteed line of electric clocks is priced low enough to enable you to beat all competition and yet make a handsome profit for yourself. On your next service call sell your customer a beautiful Ingraham Electric Clock.



Streamline Tambour

Visual Signal Denotes Current Interruptions

An exceptionally attractive mantel clock. Modern streamline design of exquisite beauty. Gold plated escutcheon. $4\frac{1}{2}$ inch ornamented tu-toned silvered metal dial with visual signal which indicates any current interruption. A small round opening in dial face shows red if the self-starting clock motor has been momentarily stopped because of a current interruption. Gold finished sweep second hand. Gracefully designed minute and hour hands. Large, clear, easy to read numerals. Case is made of selected figured Walnut with inlaid panels of Maldon veneer and Butt Walnut. A soft, hand-rubbed finish adds richness and charm and brings out the natural loveliness of the selected woods. Fitted with felt feet. Length 19 inches, height 5 inches.

3A11808—List Price, \$8.75.

YOUR LOW PRICE.....

\$5¹⁴

Streamline Tambour

Strikes the Hour and Half-Hour

An artistically designed mantel clock that actually thrills with its perfection of line, the rare beauty of its choice woods. A beautifully toned bell strikes the hour and half-hour. The tone of the strike may be adjusted in volume and clarity. The hands may be turned backwards without injuring the strike and the clock will always adjust itself automatically to strike the exact hour at which the hour hand points. Gold plated oval escutcheon with oval tu-toned silver plated dial, attractively decorated with gold finished design. Gold plated sweep second hand. Case made of selected figured Walnut with inlaid panels of Buri Walnut and mounted on an attractive base with carved moulding. The hand-rubbed finish brings out perfectly the sparkling beauty of its fine, rich color. Fitted with felt feet.

Size of clock, 20" long, 5" high.

3A11809—List Price, \$13.50.

YOUR PRICE.....

\$7⁹⁴

The Orpheus

A mantel clock of unusual and pleasing design. Strikes the hour and half-hour. The beautifully toned strike may be adjusted in volume and clarity. Strike automatically adjusts itself to the exact hour at which the hour hand points whenever hands are reset. Gold plated escutcheon with tu-toned silvered plated $4\frac{1}{2}$ " dial decorated with an attractive design. Visual signal on dial face denotes any current interruption. Gold finished sweep second hand. Case is made of selected Walnut with curved front corners and trimmed with Walnut mouldings. Carved Walnut moulded base. Felt feet. Finished in lacquer and hand-rubbed to a smooth, fine finish. Silk lined, attractively designed radii grille. Height of clock 9 $\frac{1}{2}$ " inches, width 6 inches.

3A11807—List,

\$11.00.

YOUR

PRICE.....

\$6⁴⁷

The Minaret

A gracefully designed mantel clock of exquisite beauty—truly representative of famous Gothic architecture. A fine looking clock that will fit nicely in conservative surroundings. The four ornamented spirals add to the grace and beauty. Gold plated escutcheon. $4\frac{1}{2}$ inch ornamented etched tu-toned silvered metal dial with visual signal that indicates any current interruption. Gold finished sweep second hand—gracefully designed hour and minute hands. Convex clear crystal glass lens. Large, easy to read numerals. Genuine Walnut case of especially selected wood with madrone buri overlay. Hand rubbed to a smooth, fine polished finish. Height of case 10 $\frac{1}{2}$ inches, width 7 $\frac{1}{2}$ inches.

3A11810—

List \$10.00.

YOUR

PRICE.....

\$5⁸⁸

The Cathedral

A church nave design. Simulates the architecture of the Rheims Cathedral in France. Imparts a touch of "Old World" atmosphere. Strikes the hour and half-hour. The beautifully toned bell may be adjusted in volume and clarity. The hands may be turned without injuring the strike and the clock will always adjust itself automatically to strike the exact hour at which the hour hand points. Gold plated escutcheon. $4\frac{1}{2}$ inch ornamented etched tu-toned silvered dial with visual signal that indicates any current interruption. Gold finished sweep second hand. Case, nave, and four columns with their caps and bases are made of selected Walnut. Decorative overlays are of Walnut finished in a slightly different shade of two-toning to secure the best artistic effect. Hand rubbed case. Height 10 $\frac{1}{2}$ " inches, width 7 $\frac{1}{2}$ ".

3A11808—

List, \$14.50.

YOUR

PRICE.....

\$8⁵³

The Moderniste

An ultra-modern design of striking appearance. Especially designed to harmonize with the most modern furnishings. Truly adds a futuristic touch to even the most ultra-modern surroundings. Gold plated escutcheon. $4\frac{1}{2}$ inch ornamented etched tu-toned silvered metal dial with visual signal to denote current interruptions. Gold finished sweep second hand—gracefully designed hour and minute hands. Convex clear crystal glass lens. Large, easy to read numerals. Cabinet is made of carefully selected genuine walnut. Base is fitted with felt pads to protect polished surfaces. Entire case is finished in lacquer and is hand-rubbed to a beautiful finish. Height of case, 9 inches; width 7 $\frac{1}{2}$ inches.

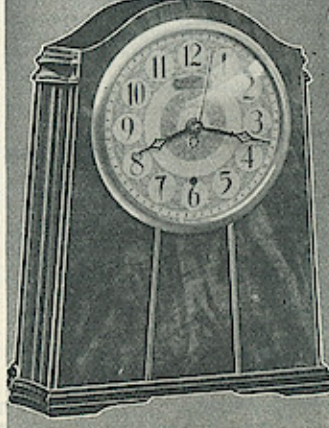
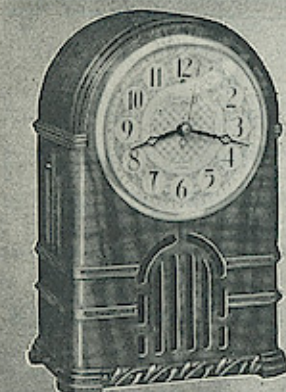
3A11811—

List Price, \$6.25.

YOUR

PRICE.....

\$3⁶⁷





The Petite A Dainty Creation

A clock of exquisite design suitable for the mantel or boudoir. Gold plated escutcheon. 4" etched silver tu-toned metal dial with visible signal to denote current interruptions. Gold finished sweep second hand. Convex crystal glass lens. Genuine walnut case carefully selected as to grain and color. Fine hand-rubbed lacquer finish brings out the natural loveliness of the grain. This superb creation will add charm and fit in nicely with the most luxurious furnishings. Self-starting synchronous motor. Size 6 1/4 inches high, 5 1/2 inches wide.

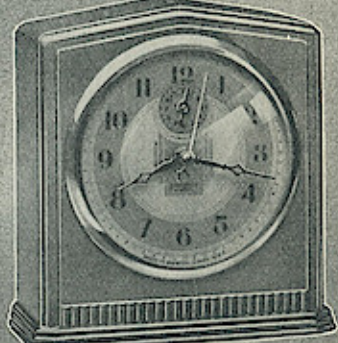
3A11800—List Price, \$6.00 **\$3 53**
YOUR PRICE



Princess Alarm Single-Tone Chime Alarm

A dependable alarm clock of graceful design that will add to the charm of the boudoir. It wakes the sleeper, without shock, and without waking the entire household. It strikes once, then twice, and then three times and repeats. Genuine mahogany case with three solid mahogany panels on each side. Solid mahogany ribbed base. Felt feet. Fine hand-rubbed lacquer finish. Gold plated sash and etched silver plated dial with visual signal to denote current interruptions. Gold finished sweep second hand. Self-starting synchronous motor. Size 5 3/4" high, 5 3/4" wide.

3A11801—List Price, \$6.00 **\$3 53**
YOUR PRICE

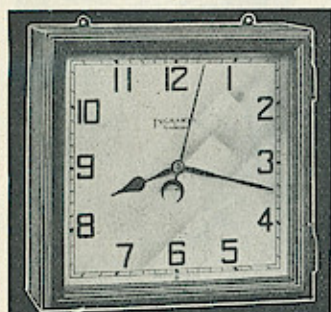


Century Alarm Clear Tone Alarm Bell

Ebony enameled metal case. A practical alarm clock that harmonizes with any surroundings. The soft toned bell continues to ring until the sleeper is aroused. Convenient top stem shut-off. Absolutely dependable. Will give years of satisfactory service without attention. Polished chromium plated bezel. Convex crystal glass lens. 3 1/2 inch tu-toned etched metal dial. Large black easy-to-read numerals on silver finished background. Gold finished sweep second hand. Manual-starting synchronous motor. Size of clock 6 1/4 inches high, 5 1/2 inches wide.

3A11802—List Price, \$2.25 **\$1 32**
YOUR PRICE

15 Inch Office Clock



Designed for use in the office, store or shop. Large 13 1/4 inch square silvered metal dial with visual signal to denote current interruptions. Easy to read 1 1/2 inch high sharply cut numerals. 7 1/2 inch long red colored sweep second hand. Gracefully designed blued steel hour and minute hands. Fitted with brackets for hanging on wall. Genuine mahogany case, hand-rubbed finish. Size 14 1/4 inches square. Clear crystal glass lens. Opens at the front for resetting hands. Self starting synchronous motor.

3A11803—List Price, \$10.00 **\$5 88**
YOUR PRICE

Kitchen Wall Clock

A shapely designed and attractively colored clock for the kitchen wall. Case and back are of drawn brass finished in an ivory color with green scalloped decorations. Large 4 1/2 inch dial face finished in ivory with large black numerals. Blued steel hour and minute hands, brass sweep second hand. Manual starter and hand reset adjustment at bottom of case. This feature affords the greatest convenience for resetting the hands or restarting the motor. Both of these operations are easily accomplished without removing the clock from the wall. Convex glass crystal lens. Diameter of case 7 1/4 inches, depth 2 1/2 inches.

3A11804—List Price, \$2.80 **\$1 65**
YOUR PRICE



Toastswell Toaster and Tray Set

New "Stop Watch" Feature



An attractive hospitality tray set that instantly arouses feminine admiration—that makes women want to buy. Complete set includes Automatic Toaster, Bakelite Tray, five compartment Relish Dish with chromium plated cover, Knife and Cutting Board.

The Toaster

Toasts two slices of bread on both sides at the same time—light, medium or brown. Entirely automatic in operation—goes on to low heat when plugged in when switch is set, toaster goes on to high—a bell rings when toast is complete, at which time the Toaster goes back to low heat—keeping the toast hot until ready to serve—when ready to serve, just raise the basket by lifting with a single knob. New "Stop Watch" feature assures uniform toast without preheating. It allows more time for toasting while the Toaster is cold and less time when it is hot. Over-type toasting compartments. Compactly built. Modernistic embossed lines. Beautiful, easily cleaned, long lasting triple chromium finish. Bakelite handles. Nichrome coil heating elements faced vertically over lava insulation. Overall dimensions: height 7 3/4", width 6 1/4", depth 8 3/4". Wattage 660. For operation on any 105 to 120 volt current. Supplied with detachable cord and plug.

1936 Model!

Complete Tray Set With Automatic Toaster

3A11825—Automatic toaster, bakelite tray, relish dish with chromium plated cover, cutting board and stainless steel knife. Underwriters' Approved. List Price, \$15.50. **\$9 11**
YOUR PRICE

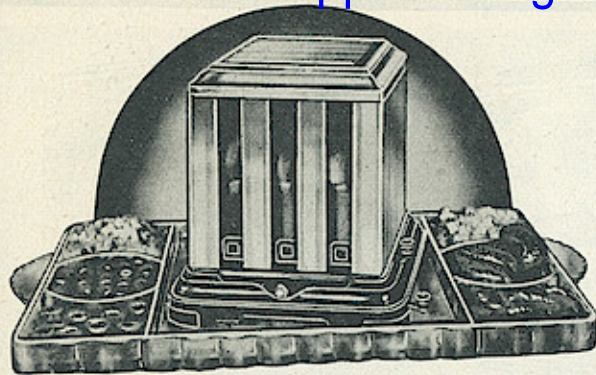
Automatic Toaster Only

3A11826—Automatic two slice chromium plated toaster only. Exactly the same as supplied with the complete tray set. With detachable 6 foot cord and plug. Underwriters' Approved. **\$6 76**
YOUR CHOICE

Tray, Dish, Knife, Cutting Board

The stream lined design Toastswell tray is made of beautifully polished black bakelite that will not stain or warp and is cigarette proof. Size: length 23", width 12", height 1". Large one-piece, five compartment, white crystal glass serving dish with chromium plated cover. Handy cutting board and a high quality stainless steel knife are supplied.

Windows App Images To PDF Maker



New Samson Tri-Matic 3 Slice Entirely Automatic Toaster

1. Makes one to three slices of perfect oven baked toast—automatically.
2. Convertible—in toasting one slice, current is off in unoccupied chambers.
3. Adjustable—makes toast “as you like it” from lightest to darkest.
4. When toast is done main units are automatically turned off and small unit turned on to keep toast hot without burning.
5. Simple mechanism, no oiling necessary.
6. Easy to clean—removable crumb drawer, finest chromium finish, cool bakelite base.
7. Economical—scientifically designed without opening at top to conserve heat. Flat top serves to keep extra toast warm. Consumes one-third less current per slice than other automatics.

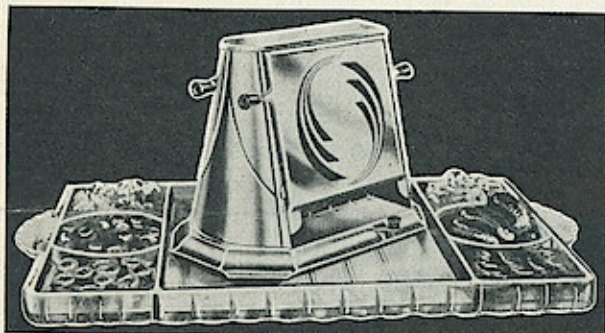
Long life and satisfactory service is assured by extremely rugged construction. Highest quality genuine mica heating element. Cool, heatproof black satin finished bakelite base seals clockworks from the deteriorating effects of heat. For operation on any current from 105 to 120 volts, either alternating or direct. Comes complete with six foot braided cord and unbreakable rubber plug cap. Approved by Underwriters' Laboratories

3A11860—Toaster Only. List Price, \$11.95.
YOUR PRICE, Each \$7.80 Less 2% Net. **\$7.64**

3A11861—Toaster with a handsome fluted glass Canape Tray of fine clear crystal with genuine platinum decorations. Tray has six compartments. Size of tray 11"x19". List Price, \$14.95.
YOUR PRICE, Each \$9.75 Less 2% Net. **\$9.55**

3A11862—Canape Tray only. List Price, \$5.00
YOUR PRICE, Each \$3.00 Less 2% Net. **\$2.94**

New Time Control Toaster and Hospitality Tray Set



A strikingly attractive tray set at a moderate price. The toaster is constructed entirely of heavily chromium plated steel. Toasts two slices of bread. May be set for any texture toast from light to crisp. A bell signals when toast is done. Toast turns automatically when doors are lowered. Nichrome ribbon heat unit wound on finest Mica. Supplied with 6 foot cord and plug. Underwriters' approved. Hostess tray is made of clear crystal glass with genuine platinum decorations and has six compartments. Size of tray 11"x19". For any 105 to 120 volt current.

3A11866—Time Control Chromium Toaster and Canape Tray. List Price, \$7.50.
YOUR PRICE, Each \$4.85 Less 2% Net. **\$4.76**

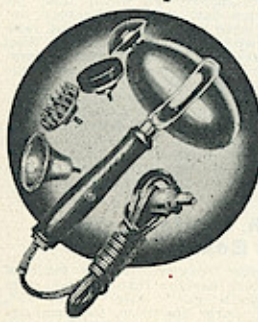
3A11863—Time Control Chromium Toaster Only. List \$4.50
YOUR PRICE, Each \$2.95 Less 2% Net. **\$2.89**

3A11864—Time Control Toaster same as above except ends and top finished in ebony instead of chromium. List, \$3.95.
YOUR PRICE, Each \$2.60 Less 2% Net. **\$2.55**

3A11865—Auto-Flip Toaster only. Same as above except not equipped with time control. Entire assembly chromium plated. List Price, \$2.95.
YOUR PRICE, Each \$1.90 Less 2% Net. **\$1.86**

3A11862—White Crystal Glass Tray only. List Price \$5.00
YOUR PRICE, Each \$3.00 Less 2% Net. **\$2.94**

Super Power Vibrator With 4 Applicators

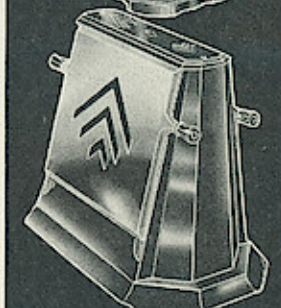


A modern scientific instrument designed to promote health and beauty. Operates with the strength of trained human fingers. For use in the home or beauty shop. Comes complete with four large beauty shop type applicators for the face, scalp or body. Super powerful vibrating mechanism. Black walnut handle with convenient snap switch. Waterproof, washable 6 foot rubber cord and rubber plug. Attractively finished in brown enamel with chromium band. No radio interference. Shockproof. Underwriters' Approved. For any 105 to 120 volt current.

3A2279 — Complete with Finger, Ball, Sponge and Cup Applicators. Price, \$3.95.
YOUR PRICE, Each \$2.60
Less 2% Net. **\$2.55**

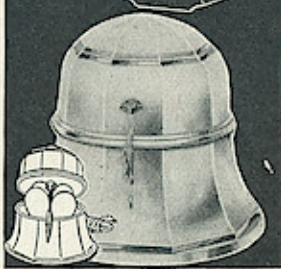
Bread-N-Roll Toast Baker

Toast everything at the table—bread, rolls, muffins and buns. Automatic expansion hinge expands for any thickness or size. Toast turns automatically when doors are lowered. Highly efficient, toasts two slices at once quickly and evenly. Nichrome ribbon heat unit wound on finest Mica. Sturdy steel body double chromium plated with ends and top finished in heat resisting ebony enamel. Bakelite handles. Ebony bakelite crumb tray. Complete with 6 foot cord with bakelite connector and attachment plug cap. Approved by the Underwriters' Laboratories. For any current.
3A11867—List Price, \$4.95.
YOUR PRICE, Each \$3.25
Less 2% Net. **\$3.18**



Auto-Flip Toaster

A high quality low priced toaster. Constructed entirely of steel. Doors are chromium plated. Ends, base and top are finished in heat resisting ebony enamel. Black bakelite handles. Easy to clean. Toasts two slices at once—turns toast by lowering door. Nichrome ribbon heat unit wound on finest Mica. Complete with 6 foot cord and plug. Listed as Standard by Underwriters' Laboratories. For any current.
3A11868—List Price, \$2.25
YOUR PRICE, Each \$1.45
Less 2% Net. **\$1.42**



Egg Cooker

Entirely automatic. Cooks 4 eggs to the desired degree and automatically shuts off the current. Cover pops up when eggs are boiled. Entire assembly is finished in durable chromium complete with 6 foot cord and plug. Underwriters' approved. For any current.
3A11869—List Price, \$4.95.
YOUR PRICE, Each \$3.25
Less 2% Net. **\$3.18**

Standard Vibrator With 3 Applicators

An excellent quality low priced vibrator. Not as powerful as the machine at left. Magnetic type mechanism. Comes with three interchangeable applicators. Can be used to reduce weight, eliminate headaches, stiff neck, sleeplessness and aches and pains due to congestion. Six foot Underwriters' Approved all rubber cord and rubber plug cap. Finished in ebony with an attractive chromium band. For any 105 to 120 volt current.

3A2278—List Price, \$1.96.
YOUR PRICE, Each \$1.32
Less 2% Net. **\$1.29**

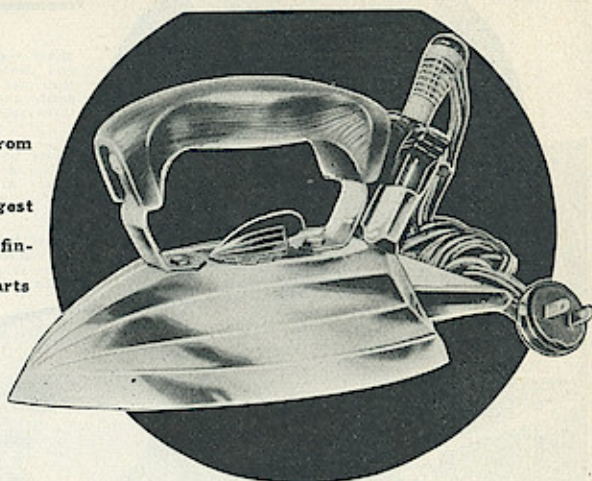


Samson Panelmatic Adjustable Automatic Iron

1. Most accurate automatic heat control—cannot overheat.
2. Adjustable to 25 different heats—a heat for every fabric.
3. Stops heat rot—eliminates invisible destruction of clothes from excessive heat.
4. Soon pays for itself—in clothes, current and work it saves.
5. Samson "Steel Rock" embedded heat unit—America's longest life heat unit.
6. Fatigue-proof handle—new comfort thumb grip can't burn fingers.
7. Chromium plated—durable chromium finish on all metal parts does not tarnish or rust.
8. Bevelled sides—goes under buttons easily.
9. Tested and Approved by Underwriters' Laboratories.

Saves Clothes With Controlled Heat

Prevents scorching of clothes and "heat rot" caused by too hot an iron! Eliminates pulling out the cord or turning a switch to let iron cool. The Samson Panelmatic iron cannot overheat even if left standing. Once the indicator is set a constant and even heat is maintained. Current turns off and on at the proper intervals and automatically maintains the proper temperature. Not only does it make clothes last longer but also reduces the amount of electricity consumed. For operation on 110 volts A.C. only.



Price List

- 3A11850—Panelmatic Adjustable Automatic Iron. Full 6 lbs. 600 watts. List Price, \$3.95. **\$2.55**
YOUR PRICE, Each \$2.60 Less 2% Net.....
- 3A11851—Panelmatic Adjustable Automatic Iron. Full 6 lbs. 850 watts. Greater heating capacity due to heavier element. Handles heavy, damp linens, sheets, table cloths, and other heavy duty ironing as well as sheerest fabrics with ease. List Price, \$4.95. **\$3.12**
YOUR PRICE, Each \$3.19 Less 2% Net.....
- 3A11852—Feathermatic Adjustable Automatic Iron. Same construction as above irons except weight is only 3½ lbs. 850 watts. List Price, \$4.95. **\$3.12**
YOUR PRICE, Each \$3.19 Less 2% Net.....



Adjustable-Automatic Heat Control

25 different heats. A heat for every fabric. Current cuts off at heat set and comes on again when needed to maintain even heat. Saves current—saves clothes—prevents fires from overheated irons.

Samson Non-Automatic Irons DeLuxe Model

Finest quality non-automatic full size 6 pound iron. Large beveled sole plate assures quicker ironing and ease in ironing under buttons. Long life heat unit is sealed against air and moisture. Durable CHROMIUM plate does not tarnish. Genuine walnut handle designed to prevent finger burns. Perfect balance eliminates hand and wrist strain. Streamline, panelled design. Complete with 6 foot all rubber cord and plug. 600 watts. Listed as Standard by Underwriters' Laboratories. Operates on any 105 to 120 volt current.

3A11853—List Price, \$2.95.
YOUR PRICE, Each **\$1.86**
\$1.90 Less 2%.....

Standard Model

Exactly the same as the above iron except with panelled enameled handle and braided cord set instead of rubber.

3A11854—List Price, \$2.25.
YOUR PRICE, Each **\$1.47**
\$1.50 Less 2%.....

Boudoir Iron

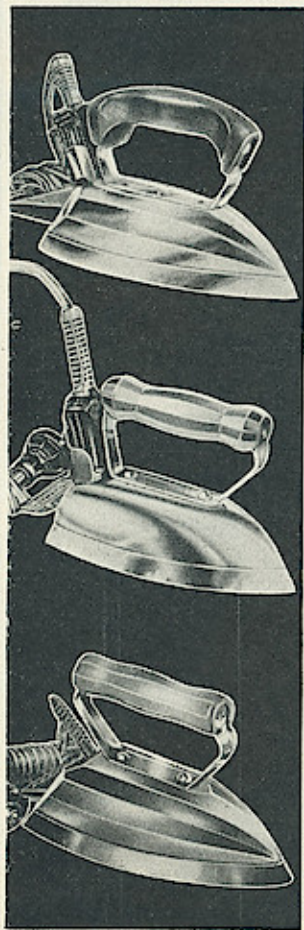
A small light weight iron that does a real ironing job. Easily fits into a hand bag. Does most everything a large iron will do but not as quickly or easily. Long beveled sole plate permits ironing under buttons. Heat unit made of finest chrome wire. Finest quality chromium finish. Walnut handle. Underwriters' Approved 6 foot braided cord and plug. Weight 3 lbs. 325 watts. Operates on any 105 to 120 volt current.

3A11855—List Price, \$1.95.
YOUR PRICE, Each **\$1.26**
\$1.29 Less 2%.....

Utility and Travel Iron

Designed for ironing handkerchiefs, lingerie, collars, cuffs or the high blouse. Weighs less than 2 lbs. Double insulated heat unit of highest quality resistance wire. Underwriters' Approved 6 foot all rubber cord and plug.

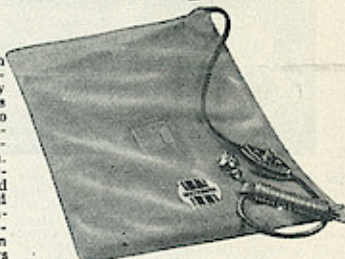
3A11856—Chromium Plated Finish. List Price, \$1.50.
YOUR PRICE, Each **95c**
97c Less 2%.....
3A11857—Baked Enamel Finish. List Price, \$1.25.
YOUR PRICE, Each **72c**
73c Less 2%.....



Samson Improved Heating Pads

Wetproof—3-Heat Heating Pad

Positive wetproof construction eliminates danger of short circuit through wetting. Heavy asbestos covered heating wires are sewn by cross stitching to prevent abrasion. Over the heating wires is a heavy blanket interlining in cushion construction. The entire assembly is then covered overall by a special sealed rubber jacket over which is placed a sanitary, washable, non-stretch removable cover. Samson wetproof pads have been run in a bowl of water for hours without any water penetrating through to unit. A double safety thermostat control on each heat assures positive automatic heat control—cannot overheat. Complete with 8½ foot Underwriters' Approved washable all-rubber cord and plug and three-heat bakelite switch. Size 12x15 inches. Packed in a window display package.



Wetproof 3-Heat Pads

3A2270—Super-Safe Wetproof model with removable green colored diamond brocade cover with snap type fasteners. List, \$3.95.
YOUR PRICE, Each **\$2.55**
\$2.60 Less 2% Net....

3A2271—DeLuxe Wetproof model with removable green velour cover with zipper fastener. List, \$5.95.
YOUR PRICE, Each **\$3.53**
\$3.60 Less 2% Net....

3A2272—DeLuxe Wetproof model with removable green velour cover with snap fasteners. List, \$4.95.
YOUR PRICE, Each **\$3.18**
\$3.25 Less 2% Net....

3A2273—Special Wetproof model with permanently attached cover in tan Camel's Hair finish. A braided cord is supplied instead of all-rubber cord. List, \$2.98.
YOUR PRICE, Each **\$1.91**
\$1.95 Less 2% Net....

Non-Wetproof 3-Heat Pads

3A2274—Double-Safe model with removable green colored diamond brocade snap-fastener washable cover. List Price \$2.95.
YOUR PRICE, Each **\$1.86**
\$1.90 Less 2% Net....

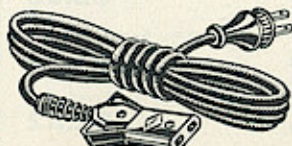
3A2275—Special Model with permanently attached tan Camel's Hair finish cover. A braided cord is supplied instead of the all-rubber cord. List Price, \$1.98.
YOUR PRICE, Each **\$1.30**
\$1.33 Less 2% Net....

Tie-Slip Cover

3A2276—Muslin cover to fit over any of the pads listed above. Keeps regular cover on heating pad clean or can be used over pads not equipped with washable removable covers. List Price, 25c.
YOUR PRICE..... **15c**

Samson All Rubber Heavy Duty Cord Set

Wetproof, washable, kinkless heavy rubber 3 foot long cord with unbreakable rubber plug cap and bakelite connector plug. Silver plated contact clips. Walnut color. Underwriters' Approved.
3A2277—List Price, 59c.
YOUR PRICE..... **32c**



SAMSON FINEST

Samson Super Power Mixer

Mixer consists of fruit juicer, mixer, beater, beverage mixer, mayonnaise oil dropper and two bowls. Ball-bearing revolving table for bowls. Mixes, beats, whips, mashes, stirs and extracts fruit juices. Can be changed from food mixer to juice extractor easily and quickly. Powerful, sturdily constructed, horizontal motor is adjustable to three speeds with handy switch right at your finger tips.

Every Modern Feature

Motor unit is easily removed from motor arm for mixing over stove, sink, etc.—Well balanced easy grip bakelite handle. Motor housing is made of sturdy die cast aluminum. All gears are machined. Shaft is supported by four bronze oilless bearings. Rugged armature and field construction. Ball jointed motor arm.

Removable Beaters

Mixer tilts back to remove bowls or for draining beaters. Beaters swing easily to side or center position in bowl at touch of finger. Beaters do not spatter. Separately removable beaters are constructed of finest quality stainless steel. Attractive opaque green glassware resists acids, is heatproof and cleans easily. Metal parts finished with chip-proof ivory baked enamel. Equipped with 8 foot heavy all rubber super service cord and rubber plug. For operation on any 105 to 120 volt current. Tested and approved by Underwriters' Laboratories. Economical . . . saves labor. One of the most welcome time-saving devices for kitchen use. Performs many operations formerly done only by hand. Of sturdy construction . . . long wearing . . . it will give you years of satisfactory service.

3A11870—Complete as illustrated.
List Price, \$17.95.

YOUR PRICE, Each \$11.75 Less 2% Net

\$11⁵¹



Coffealator Set



See the coffee made to the strength you desire. The coffealator is constructed of beautifully shaped, heat resisting crystal glass with smart platinum hand decorations. Glass handle always remains cool. Brews coffee without bitter metallic taste. Heat resisting sugar and creamer to match. Large ebony bakelite tray. Chromium finished electric stove has large bakelite handles and rubberoid feet. Stove can be used for other purposes. Brews two to nine cups of coffee. Top of coffealator and coffee basket can be removed and coffealator used as a pitcher for serving feed coffee, lemonade or iced tea. Supplied with 6 foot braided cord set. Underwriters' Approved. For operation on any 105 to 120 volt current.

3A11871—Complete Coffealator Set as described above.

List Price, \$9.95.

YOUR PRICE, Each \$6.50 Less 2% Net.

\$6³⁷

3A11872—Coffealator only with chromium finished electric stove. List Price \$5.95.

YOUR PRICE, Each \$3.90 Less 2% Net.

\$3⁷²

China Percolator Set



Made of finest quality heat-proof china and finished in rich old ivory tint with beautiful pastel holly hock floral designs on both side panels. All metal parts are chromium plated. China sugar and creamer to match. Serving tray is 20 inches long and 12 1/2 inches wide and finished in two-tone chromium plate. Nichrome heat unit is fully enclosed and fuse protected. Current is automatically disconnected if pot goes dry. Makes coffee without bitter, metallic taste. Seven cup capacity. 6 foot braided cord set. Tested and approved by the Underwriters' Laboratories. For operation on any 105 to 120 volt current.

3A11873—Complete Set as illustrated.

List Price, \$14.95.

YOUR PRICE, Each \$9.75 Less 2% Net.

\$9⁵⁵

3A11874—China Percolator only with cord set.

List Price, \$7.95.

YOUR PRICE, Each \$5.20 Less 2% Net.

\$5¹⁰

Samson De Luxe Coffee Master Set

Brews Coffee Scientifically

An attractive coffee maker set with the newest features in coffee making. Brews coffee in vacuum way, entirely in glass. New improved porcelain filter disc prevents clogging, and eliminates muddy, bitter coffee—speeds up drip process. High quality heat resisting, practically unbreakable glass bowls and cover. Easy grip, heat-proof bakelite handle. Panelled glass bowls are decorated with attractive platinum striping with sugar and creamer to match. Chromium finished electric stove has high quality refractory grids with finest nichrome wire unit, large bakelite handles and rubberoid feet. Large size 18 inch long and 10 inch wide ebony bakelite tray. Complete with 6 foot cord set. For any 105 to 120 volt current. Tested and approved by Underwriters' Laboratories.

3A11875—Complete Coffeemaster set as described above. 6 cup capacity. List Price, \$8.95.

YOUR PRICE, Each \$5.85 Less 2% Net.

\$5⁷³

3A11876—Complete Coffeemaster set as described above. 8 cup capacity. List Price, \$9.45.

YOUR PRICE, Each \$6.17 Less 2% Net.

\$6⁰⁵

3A11877—Coffeemaster only with chromium plated stove, 6 cup capacity. List Price, \$4.95.

YOUR PRICE, Each \$3.25 Less 2% Net.

\$3¹⁸

3A11878—Coffeemaster only with chromium plated stove and cord set. 8 cup capacity. List Price, \$5.95.

YOUR PRICE, Each \$3.90 Less 2% Net.

\$3⁸²



Lowboy Combination Sandwich Toaster, Grill and Waffle Iron

Finished in gleaming chromium with ebony inlay. Extra large, interchangeable grids for grilling, toasting and waffle baking. Sandwich grids toast two large jumbo sandwiches. Waffle grids make two large waffles (enough to serve four people) at one time. Extra wide expansion hinge allows ample distance between grids for thick 3-decker sandwiches. Upper grid lays back, makes double grilling surface for steaks, chops, etc. Large slip-on drip cup catches excessive drippings and prevents overflow of excess grease on table. Chromium grids eliminate food odors. All handles and plugs of genuine heat resisting bakelite. Samson patented "Steel-Rock" heat unit embedded in Chemi-Rock and encased in steel. Size of grids 6x11½ inches.

Thermostat Heat Control

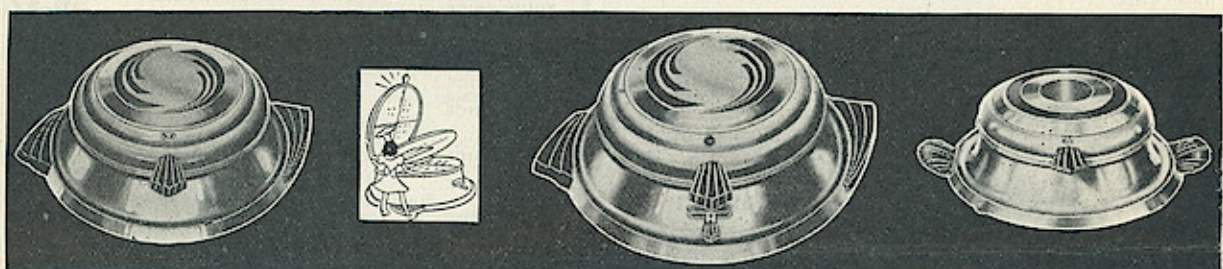
Different foods require different heats. Six positions on automatic heat indicator eliminates all guess-work in using. Proper heats are supplied for plain toast, toasted sandwiches, hot cakes, French toast, bacon and eggs, broiled steaks and chops, omelets and waffles. Supplied with six foot cord, connector and plug. Approved by Underwriters' Laboratories.

3A11879—Complete with interchangeable chromium plated sandwich grids. List Price, \$9.95.
YOUR PRICE, Each \$6.50 Less 2% Net..... \$637

3A11880—Similar to the above except supplied with permanent sandwich grids only. List Price, \$5.95.
YOUR PRICE, Each \$3.90 Less 2% Net..... \$382



New Improved Samson Waffle Irons



"Lifto" Heat Indicator Waffle Iron

Beautiful and durable chromium finish. Heatproof bakelite airline handles. ¾ inch stickproof grids. New "Lifto" feature, automatically raises waffle out of grid when cover is raised. No more sticking or prying to get waffle out. The "Lifto" attachment nestles underneath the waffle while it is baking. Thermostat heat indicator signals when iron is ready to receive batter or when iron is too cold or too hot. 6 foot cord, connector and plug. Underwriters' Approved.

3A11881—List Price, \$5.95.
YOUR PRICE, Each \$3.90 Less 2% Net..... \$382

3A11882—Similar to above except with 7¼ inch stickproof grids and without "Lifto" feature. List Price, \$4.95.

YOUR PRICE, Each \$3.25 Less 2% Net..... \$318

"Lifto" Adjustable Automatic Waffle Iron

- Automatically turns off the current when grids are at perfect baking temperature.
- Automatically signals and turns on current when batter is poured.
- Knows when waffle is baked perfectly—signals and turns off current.

Makes waffles from the lightest to the darkest and requires no supervision. Operates with the precision of a Swiss watch! A patented thermostat adjusts the length of baking time automatically to suit consistency of various batters. It cannot overheat—assuring perfectly baked waffles every time. The "Lifto" attachment automatically lifts the waffle from the large size 8¼" stickproof "Mirror finish" grids when the cover is raised. Entire assembly is finished in durable chromium with decorative ebony cover design and heatproof airline bakelite handles. "Steel-Rock" embedded heat unit securely sealed against moisture. Complete with 6 foot cord, connector and plug. Underwriters' approved. For operation on any 105 to 120 volt current.

3A11883—List Price, \$7.95.
YOUR PRICE, Each \$5.20 Less 2% Net..... \$509

3A11884—Similar to the above except without "Lifto" feature and with 7¼ inch stickproof grids. List Price, \$5.95.
YOUR PRICE, Each \$3.95 Less 2% Net..... \$387

Heat Indicator Waffle Iron

A beautifully designed low priced iron. Finished in durable chromium plate with an attractive ebony inlay in cover. Automatic heat indicator tells you when to bake. Finest 7¼" die-cast aluminum grids. Automatic expansion hinge assures fluffy, crispy waffles. Genuine bakelite handles. Steel-Rock embedded heat unit sealed against air and moisture. Complete with 6 foot approved cord set. Exceptional quality and eye appeal. Approved by Underwriters' Laboratories. For operation on any 105 to 120 volt current.

3A11885—List Price, \$3.95.
YOUR PRICE, Each \$2.60 Less 2% Net..... \$255

3A11886—Same as above except with large size 8¼ inch grids. List Price, \$4.95.

YOUR PRICE, Each \$3.25 Less 2% Net..... \$318

Samson Curling and Waving Irons

Swivel Cord Model

Cannot burn hair. Iron is equipped with automatic heat control—cannot overheat. Super-tension spring assures perfect curling pressure. Removable curler clamp. Easy grip always cool handle. Genuine ivory finger grip button. Nickel plated metal parts. 2,000 hour test heat unit. Swivel cord construction prevents twisting, kinking and breaking of cord. Handle finished in opalescent blue with 6 foot all rubber cord and plug to match. Underwriters' Approved.

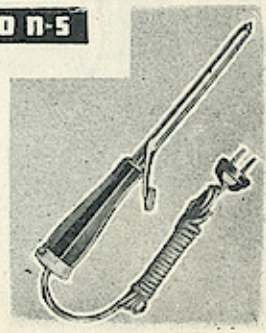
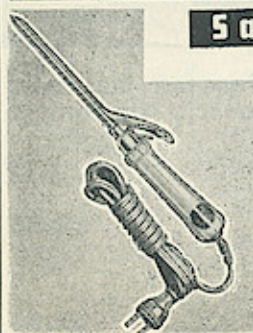
3A2280—List Price, \$1.00.
YOUR PRICE, Each 50c Less 2% Net.... 59c

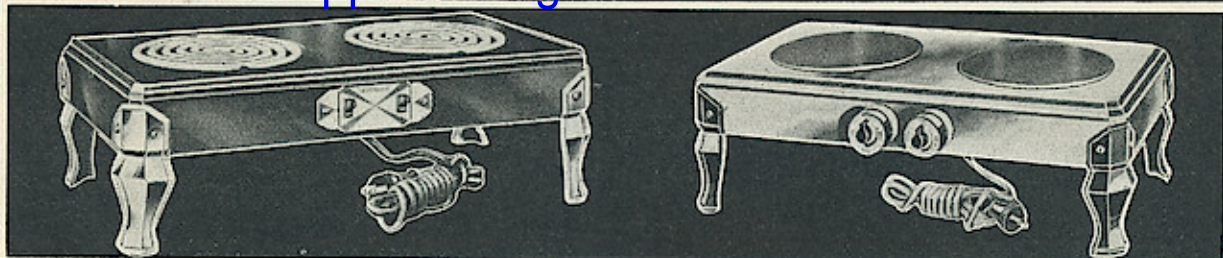
3A2281—Similar to above except without swivel cord feature. Handle and all rubber cord finished in green. List Price, 75c.
YOUR PRICE, Each 45c, Less 2% Net.... 44c

Standard Model

A low priced serviceable iron of good quality. Permanent curler clamp. Asbestos heat unit. Automatic heat control. Green enameled handle. Equipped with 6 foot rayon covered cord and bakelite plug. Packed in individual display carton.

3A2282—List Price, 49c.
YOUR PRICE, Each 32c Less 2% Net..... 31c





Refractory Unit Electric Stoves

The most outstanding values on the market. Stoves of quality and beauty unsurpassed—yet inexpensive. Modern streamlined construction. Concealed high quality switches. Attractive heat resisting ebony black enamel finish with chromium legs. High quality refractory grids with units of the finest with chromium wire. Hi-speed heat units guarantee quick heat-up. Rugged steel construction—built to last years. Inside ventilation insures longer life and greater efficiency. Complete with 6 foot Underwriters' Approved cord and unbreakable rubber plug. Underwriters' Approved switches. For operation on any 105 to 120 volt current.

Electrical Specifications

Two Burner, Single Heat Stove. Total rating 1,320 watts. 600 watts on each burner.	
Two Burner, 4 Heat Stove. Total rating 1,650 watts. 250, 500, 900 watts on left burner. 600 watts on right burner.	
Single Burner, Single Heat Stove. Total rating 600 watts.	
Single Burner, Three Heat Stove. Total rating 1,000 watts. 250, 500, 1,000 watts.	
3A11814—Two burner, single heat stove. List Price, \$3.75.	\$2.35
YOUR PRICE, Each \$2.40 Less 2% Net.	
3A11815—Two burner, 4 heat stove. List Price, \$5.30.	\$3.53
YOUR PRICE, Each \$3.60 Less 2% Net.	
3A11816—Single burner, single heat stove. List Price, \$1.65.	\$1.03
YOUR PRICE, Each \$1.05 Less 2% Net.	
3A11817—Single burner, 3 heat stove. List Price, \$2.75.	\$1.76
YOUR PRICE, Each \$1.80 Less 2% Net.	

Steel-Rock Unit Electric Stoves

Equipped with new Steel-Rock heat units entirely embedded in Chemi-rock. The top of the unit is a smooth, solid casting of alloy steel. Overflowing liquids cannot get into the cracks and crevices of the unit to smell or burn. Cannot warp or crack, oxidize or burn out. Banishes fear of shock or electrical burns through accidents. Constructed of heavy steel. Rotary type switches clearly marked. 6 foot cord and rubber plug. Approved by Underwriters' Laboratories. Operates on any 110 volt current.

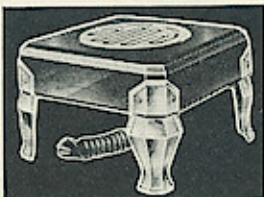
Electrical Specifications

Two Burner—4 Heat Stove. Total rating 1,650 watts. 330, 660 and 990 watts on left burner. 660 watts on right burner.	
Two Burner—2 Heat Stove. Total rating 1,050 watts. 990 watts on left burner. 660 watts on right burner.	
Single Burner—Single Heat Stove. Total rating 850 watts.	
Single Burner—3 Heat Stove. Total rating 850 watts. 212, 525, and 850 watts.	
Two Burner—4 Heat Stove	
3A11818—Chromium plated body. List Price, \$9.95.	\$6.37
YOUR PRICE, Each \$6.37 Less 2% Net.	
3A11819—Ebony enamel finish. List Price, \$7.95.	\$5.10
YOUR PRICE, Each \$5.10 Less 2% Net.	
Two Burner—2 Heat Stove	
3A11820—Chromium plated body. List Price, \$7.95.	\$5.10
YOUR PRICE, Each \$5.10 Less 2% Net.	
3A11821—Ebony enamel finish. List Price, \$5.95.	\$3.82
YOUR PRICE, Each \$3.82 Less 2% Net.	
Single Burner—3 Heat Stove	
3A11822—Chromium finish body. List Price, \$4.95.	\$3.18
YOUR PRICE, Each \$3.18 Less 2% Net.	
3A11823—Ebony enamel finish. List Price, \$3.95.	\$2.55
YOUR PRICE, Each \$2.55 Less 2% Net.	
Single Burner—Single Heat Stove	
3A11824—Ebony black enameled. List Price, \$2.95.	\$1.91
YOUR PRICE, Each \$1.91 Less 2% Net.	

The 2% cash discount is already deducted

Single Burner, Single Heat Stove

Attractive ebony black enameled finish. Durable chromium plated legs. Made from heavy gauge steel. Refractory type heat unit. Highest grade nichrome wire. 6' Approved cord and plug.



3A11837—List Price, \$1.50.
YOUR PRICE, Each 96c less 2%..... **96c**

Samson Automatic Ultra-Violet Sun Lamp

A high quality fully automatic Ultra-Violet Ray Sun Lamp. Regulator in base can be set for any length of time from 1 to 45 minutes. Shuts off automatically when treatment is finished. Employs the most powerful Ultra Violet bulb that is practical for home use. Entire assembly is portable and adjustable from 3 to 5 1/2 feet. Large 11 inch reflector is easily adjustable to any angle. Finished in durable ebony with chromium base and fittings. For operation on A.C. only, 50-60 cycle.

3A11888—Complete with bulb. List Price, \$19.95.
YOUR PRICE, Each \$12.95 Less 2% Net. **\$12.69**

3A11889—Similar to the above except without automatic time control. List Price, \$14.95.
YOUR PRICE, Each \$9.60 Less 2% Net. **\$9.41**

3A11890—Ultra-Violet Sun Lamp Bulb only. List Price, \$3.75.
YOUR PRICE, Each \$2.50 Less 2% Net. **\$2.45**

What Ultra-Violet Radiation Does for You

1. Produces vitamin D, the sunshine vitamin.
2. Prevents common colds, prevents and cures rickets.
3. Builds sound bones and teeth.
4. An aid during nursing and pregnancy.
5. Creates tanned, healthy skins.

Samson Adjustable Therapeutic Lamp

Radiates a strong glow of healing infra red rays. Useful for relief of backache, congestion due to colds, cramps, rheumatism or as a hair dryer. Highly recommended by eminent health experts. Large 8 1/2 inch aluminum reflector. Adjustable 14" goose neck. Heavy base prevents tipping. Entire assembly is finished in green enamel. Equipped with 3 foot Underwriters' Approved cord and rubber plug. For operation on any 110 volt current.

3A11891—List Price, \$3.75
YOUR PRICE, Each **\$2.43**
\$2.48 Less 2% Net.....

Hand or Stand Therapeutic Lamp

Identical in performance and operation to the lamp described at left. Upper part of lamp is easily removed to serve as a hand model. Heavy case iron base is fitted with bracket for adjusting lamp to desired angle. 8 foot approved rubber cord and plug. For any 110 volt current.

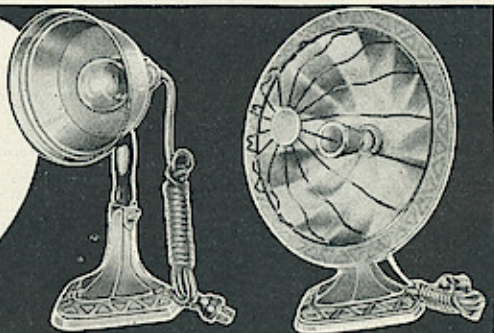
3A11892—List Price, \$3.95.
YOUR PRICE, Each **\$2.60**
Less 2% Net..... **\$2.55**

Samson DeLuxe Electric Air Heater

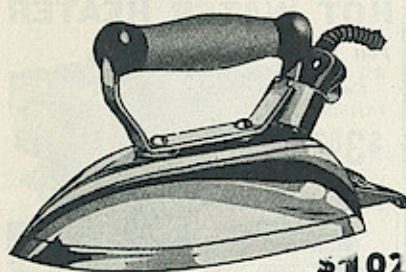
Sets new standards of room-heat efficiency. Heavy cast iron base prevents tipping. Large size 14" reflector finished in finest chromium.

3A11894—List Price, \$3.95.
YOUR PRICE, Each **\$2.60**
Less 2% Net..... **\$2.55**

3A11895—Same as above except with 12" reflector and easily removable bolt attached heat unit.
List Price, \$2.95.
YOUR PRICE, Each **\$1.91**
Less 2% Net..... **\$1.91**



WHITE CROSS Special Value 6-lb. Iron



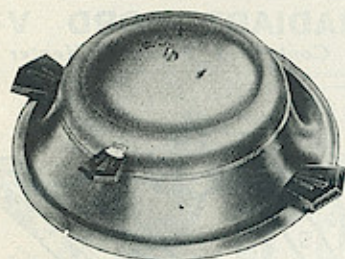
\$1.02

A streamline designed non-automatic iron. Perfect balance and sturdy construction. The heat insulated nichrome element distributes the heat evenly to every point. The full beveled edge and easy tilt heel rest assures perfect ironing with ease. Large bevel sole plate. Finished in nickel with black handle.

3A11840—Flat Iron with cord set. List Price, \$1.90. YOUR PRICE..... **\$1.14**

3A11841—Flat Iron without cord set. List Price, \$1.70. YOUR PRICE..... **\$1.02**

Special Value DeLuxe Waffle Iron

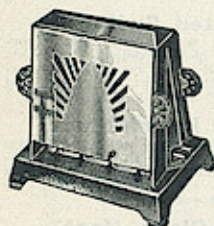


Never before have we been able to offer such an outstanding value. This full size Waffle Iron is finished in gleaming chromium plate. Bakelite side and front handles. The seven inch grids are made of special processed alloy. Has air chambered heating element that distributes the heat equally on all surfaces of both grids. Turns out a golden brown waffle every time as desired either LIGHT, MEDIUM or DARK. Patented expansion hinge. Takes any standard cord set. Cord set is not included. 550 watts.

3A11842—YOUR PRICE, **\$2.00**

Each..... Lots of 12, Each, \$1.85

Special Value Turnover Toaster



Attractively
Designed

3A11843—List Price, \$1.50. YOUR PRICE, **92c**

Each..... Lots of six, YOUR PRICE, **87c**

Each.....

An outstanding value. Meets the demand for a low priced practical toaster. Turns toast when doors are lowered. Has nichrome flat ribbon element wire wound on genuine mica. Toasts two large slices of bread at one time. Base, sides and top are finished in black heat-resisting enamel. Nickel plated doors fitted with fancy fibre evercool handles. For use on any 110 volt current. Less cord set.

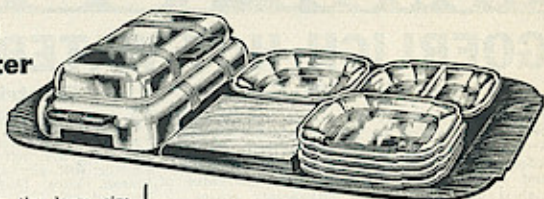
WHITE CROSS Sandwich Toaster and Tray Set

For the convenience of modern serving, the WHITE CROSS TRAY SET enables the hostess to serve tasty grilled sandwiches. Steaks, chops, ham, bacon and eggs can be deliciously grilled on the large size aluminum grill. Four large hot cakes can be baked in one operation.

Sandwich Toaster has highly polished lustrous chrome plating, black evercool handles, non-stick grids, latest type heating element, full expansion hinge which allows single slice or two-deck toasted sandwiches to be made. Completely concealed drip catcher. Front handle conceals the supporting brace which automatically drops into position as the toaster is opened. Dimensions of grids, 10 1/2" long, 5 1/2" wide. Insulated feet protect the Tray or table. Underwriters' approved cord set.

The Tray Set

The beautiful tray set is perfectly matched. Complete set includes the Sandwich Grill, two large size relish dishes, four square glass sandwich plates, carving board and a five ply selected walnut tray. Size of tray 20x14 inches.



Price List

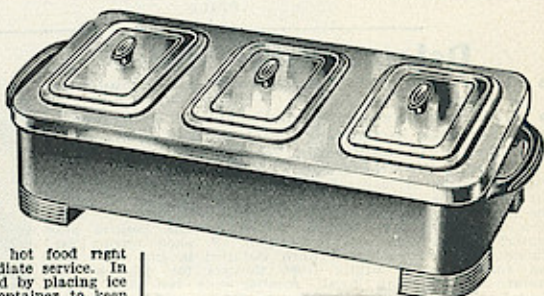
3A11827—Complete Tray Set. List Price, \$13.95. YOUR PRICE..... **\$8.37**

3A11828—Sandwich Toaster only. List Price, \$5.95. YOUR PRICE..... **\$3.57**

3A11829—Waffle Grids for Sandwich Toaster. Silverized cast aluminum grids for converting Sandwich Toaster to Waffle Iron. Makes four Waffles at a time. List Price, \$2.00. YOUR PRICE..... **\$1.20**

WHITE CROSS Hot Dish Buffet Server

Modernistic in design. Polished chrome top and feet. Ebony body. Bakelite handles and knobs. Three large, heat proof glass containers rest in the hot water compartment. Efficient ceramic cast electrical element. Size 24x10x6 inches. Detachable cord and plug. Enables the hostess to enjoy greater ease and provide her guests with piping hot food right at the table, ready for immediate service. In hot weather it can be utilized by placing ice or ice cubes in the water container to keep the food cold. Food can be prepared in the large capacity heat resisting glass containers in the oven and placed from the oven directly into the server. The server will keep the food at just the proper temperature until service to the guests is desired.



3A11830—Buffet Server. List Price, \$15.00. YOUR PRICE..... **\$9.00**

WHITE CROSS Coffee-Vac

The Scientific
Coffee Maker



Crystal clear heat-proof glass containers. Smart, beautiful, modern appearance. Electric stove with chromium shell. Attractive chromium plated tray will not tarnish or discolor. Attaching cord and plug.

8 Cup Size
3A11834—Complete Tray Set. Includes tray, electric stove and crystal glass Coffee-Vac. List Price, \$5.45. YOUR PRICE..... **\$3.27**

3A11835—Coffee-Vac and electric Stove. List Price, \$4.10. YOUR PRICE..... **\$2.46**

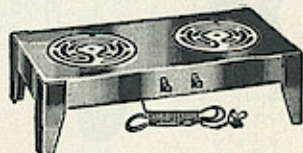
3A11836—Coffee-Vac only. No stove included. For use on gas stove. List, \$2.65. YOUR PRICE..... **\$1.59**

6 Cup Size
3A11837—Complete Tray Set. List, \$4.80. YOUR PRICE..... **\$2.88**

3A11838—Coffee-Vac and electric stove. List, \$3.45. YOUR PRICE..... **\$2.07**

3A11839—Coffee-Vac only. No stove. List, \$2.00. YOUR PRICE..... **\$1.20**

WHITE CROSS Electric Stoves



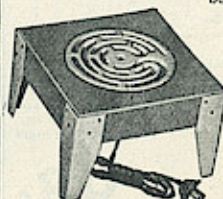
Black crackled enamel finished steel body—Ivory finished corners and feet. High heat on each burner 680 watts. Individual toggle type concealed "on" and "off" switch controls. Large size refractory type high quality heating units. Size 9x18x5 1/2 inches. 6 foot cord and plug attached.

3A11831—Double Burner Stove. List Price, \$3.10. YOUR PRICE..... **\$1.86**

3A11832—Single Burner Stove. With "on" and "off" toggle switch. List Price, \$1.35. YOUR PRICE..... **81c**

WHITE CROSS Special Value Stove

Black crackled finished steel body, ivory finished legs. Sturdy and well constructed of sheet steel. Refractory type heat unit wound with good quality resistance wire. Size 8 1/2 x 8 1/2 x 5 1/2 inches high. Supplied with attached cord and plug.



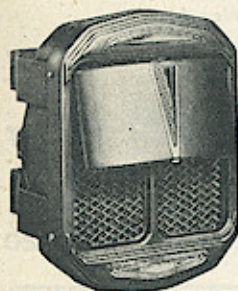
3A11833—List Price, \$1.10. YOUR PRICE..... **66c**

Newest 1936 Auto Heaters

GOERLICH HOT WATER HEATERS

Fan Type Heaters

Finest quality scientifically engineered hot water heaters. Designed to give maximum efficiency. Sturdily constructed and attractively designed. Adequate engineering and manufacturing facilities and years of experience are your guarantee of highest quality and long satisfactory service.



Electric Motor Driven

A powerful, silent running electric motor drives the new improved dynamic fan, forcing air under high pressure through heating unit. The motor bearings are self-aligning and oil-less and the motor will give endless, carefree service. Blows clean, pure, heated air the instant switch is turned on.

Standard Model

One of the finest and most dependable hot water heaters. It will maintain comfortably warm temperature in any medium sized car in the severest weather. Fits any make of car. Black baked crackle finish with polished chrome ornaments. Deflector plate can be adjusted so as to send heat in any direction. Furnished with hose, instrument panel rheostat type switch, wire and installation fittings. No thermostat included. Complete with instructions.

Specifications

Large copper tubular radiator core 6"x6"x2 1/4" deep. Large four-blade, six-inch fan. Quiet 6-volt General Industries motor. Adjustable heat deflector mounted on ball joint. Two-hole dash mounting—insures rigid installation without vibration. Rheostat type switch permits positive control of heat volume—clamps on dash or can be mounted in a single hole. Entire inner construction of copper—cannot rust. Installation can be made in either vertical or horizontal position.

4A11844—List Price, \$12.95.

YOUR PRICE

\$7.61

DeLuxe Senior Model

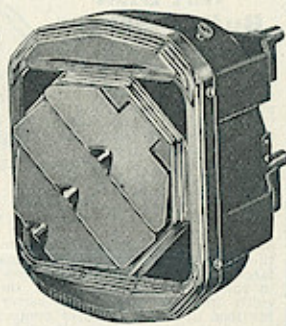
- Floods the largest sedans with over-abundance of heat.
- Brilliantly chromium plated shell and deflectors.
- Illuminated instrument panel control knob.
- Deflector is adjustable to send heat in seven different directions.

Fits any model or make of car. Floods warm, fresh air into all parts of the car by the powerful electric fan mounted behind the large, deep, heating radiator. Size of core 6"x6"x3" deep. New illuminated type rheostat switch provides positive heat control and reminds you to turn it off when leaving car. Thermostat is recommended when installed in cars which are not equipped with winter front shutters for most efficient operation. Simple to install—requires only two holes to be drilled in the bulkhead. Installation can be made with heater in either a vertical or horizontal position.

4A11845—List Price, \$15.95.

YOUR PRICE

\$9.38



New Auto-Lite Combination Manifold Heaters

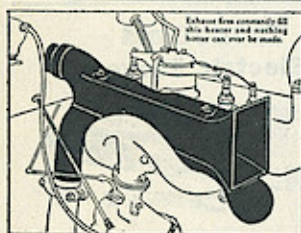
Heater and manifold is a single piece of water tested grey iron casting. Easily installed in place of regular exhaust manifold. The engine fan drives fresh outside air over the finned heating chamber where it is super heated, and forced into the car. A register and deflector gives positive control.

4A11896—For Model A and AA Fords.

YOUR PRICE **\$2.69**

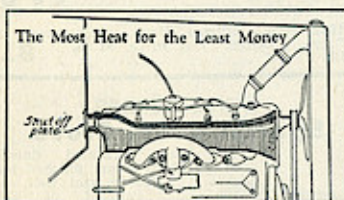
4A11847—For Model V-8 Ford.

YOUR PRICE **\$3.52**



Auto-Lite "Comfort" Hot Air Heater

For Model A and AA Fords



Clamps over and encompasses the exhaust manifold. Has interior staggered fins which rest upon the intensely heated manifold. Motor fan forces air in and around these heat radiating fins and over the hot enclosed manifold, into the car. Being of cast iron, it holds heat much longer than sheet metal types.

4A11846—List Price, Each, \$1.60.

YOUR PRICE

98c

Hot Water Heater Thermostats



Installs in water line leading from motor block to radiator. Has thermostatic action which controls rate of radiator circulation. Brings water up to comfortable heating temperature in a few minutes, by retarding flow when water is cold. Maintains uniform temperature regardless of driving speed. Easy to install. All necessary fittings and instructions furnished.

For Fords

4A2283—For all Model Fords, including A, AA, and V-8. List Price, \$1.50.

YOUR PRICE **88c**

For Chevrolets

4A2284—Special Thermostat for Chevrolets. List Price, \$2.00.

YOUR PRICE **\$1.18**

Universal Model

4A2285—Thermostat for Cars other than Fords, Chevrolets. List Price, \$1.50.

YOUR PRICE **88c**

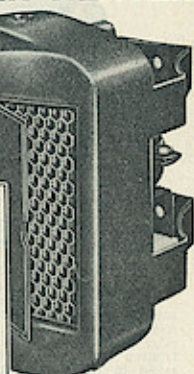
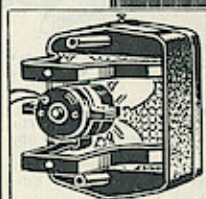
SPECIAL VALUE HOT WATER HEATER

Full Size 2 1/4 Inch Core

4A11848—

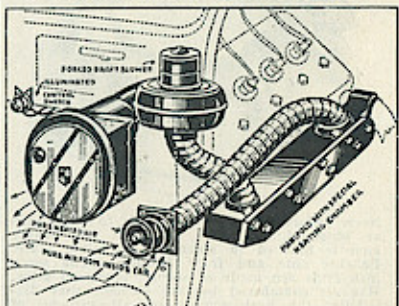
\$3.87

Complete.



A hot water heater priced almost as low as many hot air heaters. Delivers ample heat for small cars and coupes. Attractive brown cracked enamel finish. Adjustable deflectors. The copper core is 6 1/2 inches square and 2 1/4 inches deep. A fully guaranteed motor drives a four blade six inch fan forcing a steady stream of heat into the car. Variable speed switch which mounts on instrument panel gives driver full control of heat intensity. Fitted with brackets for making a secure two point mounting. Supplied complete with hose, switch, installation fittings and instructions.

RADIART FORD V-8 Controlled Pressure Heater



Real Heat . . . Immediately . . . At Any Car Speed

. . . No Fumes **\$7.62**

4A11849—List Price, \$12.95.

YOUR PRICE

A heater of the hot air type engineered and designed exclusively for the cool, efficient motor of the Ford V-8. The hot air heater is the type approved by the Ford Motor Company. Takes the heat from the hottest point on the car and circulates the air from inside your car over this "hot spot." The constant pressure supplied by a high-speed, quiet-running, centrifugal fan assures real instantaneous heat.

Illuminated Switch

An illuminated switch with speed control governs the exact amount of heat delivered. Mounts on the instrument panel—gives controlled temperature right at your finger tips. A directional baffle plate on door of outlet box.

No Motor Interference

The Radiart heating system in no way disturbs the free flow of water in the exceptionally efficient cooling system of the Ford V-8. It is engineered to obtain heat directly from the greatest source of heat on the car.

Delivers Clean Heat

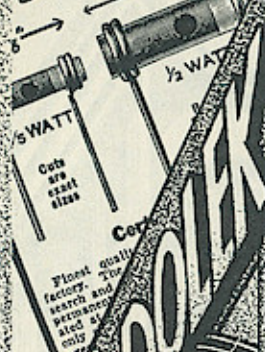
Pure air from the inside of the car is drawn over this area of intense heat and forced back into the car at a greatly increased temperature. Eliminates the necessity of thermostats, rubber hose or radiator covers. Complete assembly includes heater manifold which replaces regular right hand manifold on Ford V-8 motor, inlet escutcheon, blower unit with a Helme 6 volt motor and connections for attaching to car battery, outlet box with deflector and all necessary pipes. Complete instructions, drilling template.

Windows App Images To PDF Maker

Reduced Prices!

... Complete Listings of Radio Repair Parts in the great **RADOLEK PROFIT GUIDE**

Radolek Certified Carbon Resistors



Fresh New Stock
R.M.A. Standard
Sizes for Capacitors

Guaranteed Accuracy

Resistors from values are available within 10% average variations close to usually quite and become MORE QUITE accurate in use. Very strong and sturdy. All resistors are manufactured and tested in our own laboratories. Each resistor is tested for mechanical contact. Each resistor is tested for electrical resistance. Each resistor is tested for R.M.A. color code and mechanical strength. Modern resistors are used in testing these resistors meet all units that do not pass these rigid standards of accuracy and quality.

Be Fair to Yourself and Your Customer! We recommend a resale price of \$1.00 for Certified Quality Resistors. With this resale price you cannot afford to risk your reputation as a service-man with "odd lot" or "second-quality" cheap resistors. Use quality Radolek Certified Resistors.

Don't take a chance! Don't risk your Profit Dollars to save a few pennies!

Buy With Confidence

These Radolek highest quality carbon resistors are made by the recognized leading Resistor Manufacturer. We will know that these are resistors offered by many others at lower prices than quoted here. But Radolek refuses to handle products of doubtful quality. Radolek Resistor Company can always be sure of resistors when dealing with Radolek. We always have supplied only the finest quality resistors. "Radolek Certified Carbon Resistors." You can be assured that you will always get the Same First Quality Resistors when you order "Radolek Certified Carbon Resistors."

Radolek has tested carbon resistors sold by other companies at these same prices. Our tests have proven that in most instances there is inferior quality being offered. Although Radolek is meeting competitive quotations, Radolek will not lower the quality.

10 for ... **44¢**
1/2 WATT

10 for ... **53¢**
1 WATT

10 for ... **88¢**
2 WATT

Turn to **Page 55 of Your RADOLEK Profit Guide** for a complete listing of resistance values. Use these New Low Prices!

YOU can make more money in the Radio Service Business by using RADOLEK Service. You have your copy of the latest RADOLEK catalog, the NEW PROFIT GUIDE. If you have lost or misplaced it, send for another copy. This book is the most comprehensive handbook of Radio Parts, Accessories, Materials, Testing Equipment, P. A. Apparatus, and Radio Receivers ever published. The most extensive Parts listing ever assembled under one cover. Everything you need, at your finger-tips—at the Right Prices.

Specialty Items

... Make Extra Profits

You, Mr. Radio Service Man, are in an exceptionally favorable position to sell many articles of merchandise outside of Radio! You go into a half dozen or more homes every day upon the request of the home owner. Think of the many opportunities you have to sell other items—electrical appliances, clocks, radios, auto heaters and other allied merchandise. Here is a real opportunity for you! You can make as much and more profits on specialty items as you can on your regular service work. Take advantage of the great values offered you in this book. Send your order now.



Ralph E. Walker
Merchandise Mgr.

RADOLEK PRICES Are Right!

The prices in your Radolek Profit Guide I believe are the right prices for guaranteed quality merchandise. There is no need to split your order or go anywhere else for any of your radio requirements. Send all your orders to Radolek. We'll fill them and at the lowest price. Radolek will not be undersold. If anyone cuts our price we will meet it! Specify on your order the price you believe is the right price and state the name of the company and the page in their literature on which the article is listed. Prompt shipment will be made at the right price. Remember too that Radolek's "Wholesale Only" policy protects you. Your customers do not have a Radolek Profit Guide. I restrict the circulation of this great encyclopedia of radio merchandise, to legitimate radio servicemen and dealers. I am cooperating with all the great leaders in the radio industry to make your business more profitable.

W.C. Braun



Walter C. Braun
President

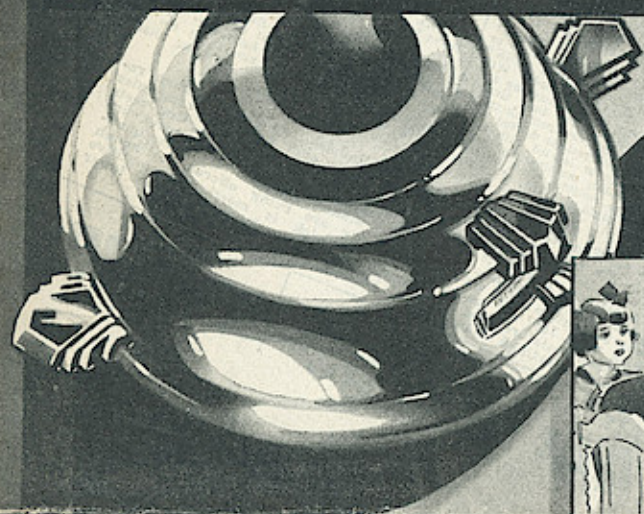


NEW 1936
MONEY-SAVERS

Big Values! Lowest Prices!

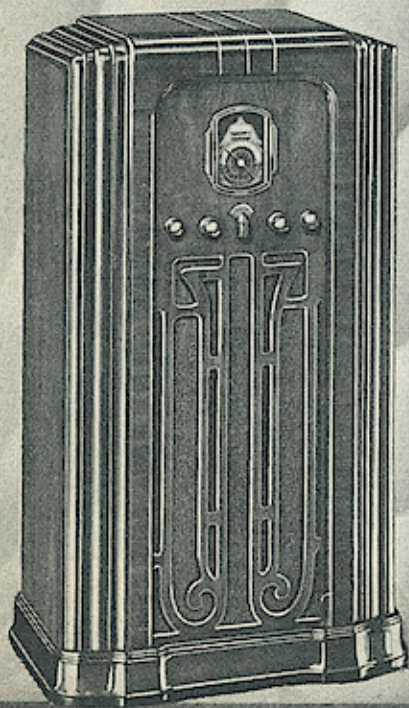
Increased profits for you!

THE RADOLEK CO.
601 W. RANDOLPH ST. CHICAGO



From
The RADOLEK Co.
Randolph at Jefferson Street
CHICAGO, ILL.

POSTMASTER:
Return Postage Guaranteed
IF RETURNED, PLEASE STATE
REASON FOR NON-DELIVERY



Sec. 562 P. L. & R.
U. S. POSTAGE
PAID

Chicago, Ill.
Permit No. 3727

RALPH LERNARD DOSCH
129 SOUTH 14TH ST
TERRE HAUTE IND

**If You Receive Duplicate Copies Of Our Current Catalog
Please Fill In The Names Under Which They Are Mailed
In The Space Provided Below**

We will appreciate your co-operation in aiding us to eliminate duplicate mailings of our catalog—it will enable us to give you better and more efficient service. If we have both your firm name and your personal name on record it may lead to confusion unless both names are properly cross-indexed.

Space Number 1 Should show your correct name and address for our records and for all catalog mailings.

Space Number 2 Fill in the name and address under which you receive duplicate copies of our current catalog.

Space Number 3

Should you misplace or wear out your Radolek catalog we will gladly send you a new one on request.

My Name Should Appear On Your Mailing List As Follows

Num.1

Print Name In Full		
Street Address or Route Box Number		Box Number
	R.F.D.	
Post Office	State	
Please Give Shipping Point If Different From Post Office		
Shipping Point	State	County
If Your Firm Name is Listed Above - Fill In Here Your Personal Name or Name of Buyer		
Buyers Name		

I Receive Duplicate Copies of Your Catalog Under the Following Name

Num.2

Print Name In Full		
Street Address or Route Box Number		Box Number
	R.F.D.	
Post Office	State	

I Receive Duplicate Copies of Your Catalog Under the Following Name

Num.3

Print Name In Full		
Street Address or Route Box Number		Box Number
	R.F.D.	
Post Office	State	