



Supplement A
to
Seth Thomas Clock Catalog
No. 777

*Illustrating additions that have been made
to the Seth Thomas line since the publication of
Catalog 777.*

IN mantel, desk, boudoir and hanging
clocks these distinctly new and attrac-
tive designs greatly enrich the various
groups found in the general catalog.
Many of them will be featured in Seth
Thomas advertising and inquiries for
them will result. It is therefore import-
ant to include this supplement with your
Seth Thomas catalog. Neither your cata-
log nor knowledge of the line will be
complete without it.

NEW YORK
19 West 44th Street

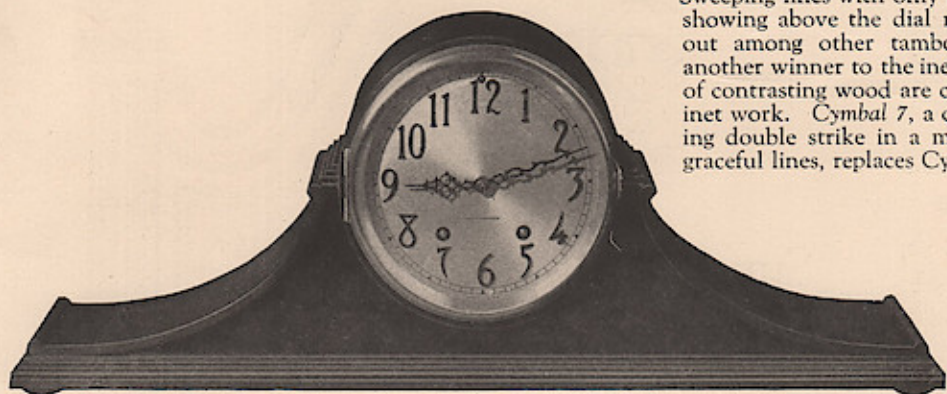
CHICAGO
215 West Randolph Street

SAN FRANCISCO
278 Post Street

Windows App : Images To PDF Maker

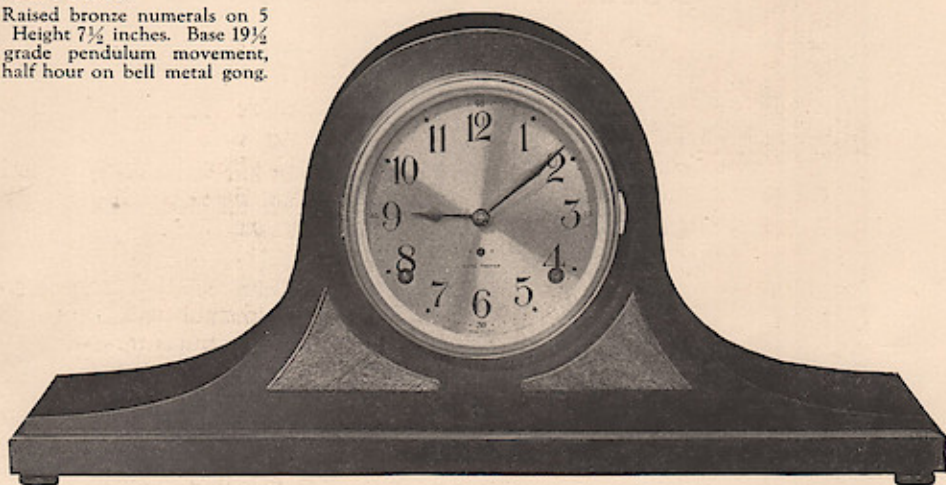
Mahogany Mantel Clocks

TAMBOUR 12. The familiar tambour shape has been greatly improved in this new design. Sweeping lines with only a quarter-inch of wood showing above the dial make this model stand out among other tambours. *Sentinel 10* adds another winner to the inexpensive group. Panels of contrasting wood are combined with fine cabinet work. *Cymbal 7*, a quarter hour self adjusting double strike in a mahogany case of plain, graceful lines, replaces *Cymbal No. 1*.



TAMBOUR 12

Mahogany case. Raised bronze numerals on 5 inch silvered dial. Height $7\frac{1}{2}$ inches. Base $19\frac{1}{2}$ inches. Highest grade pendulum movement, striking hour and half hour on bell metal gong.



SENTINEL 10

Mahogany case. 5 inch silvered dial. Height $9\frac{1}{2}$ inches. Base $19\frac{1}{2}$ inches. Strikes hour and half hour on cathedral gong.

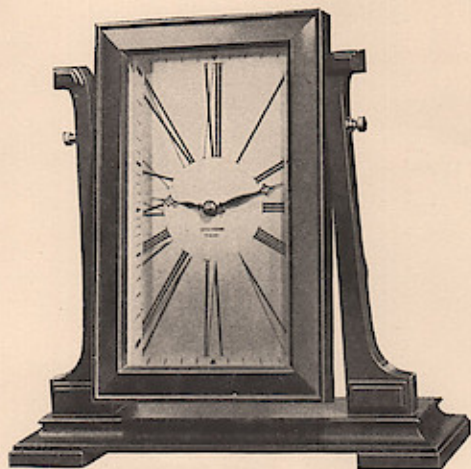


CYMBAL 7

Mahogany case. 5 inch silvered dial. Height $9\frac{1}{2}$ inches. Base 20 inches. Sounds every quarter hour with gravity strike on two horizontal rods. New self-adjusting rack and snail movement.

Windows App : Images To PDF Maker

Desk and Boudoir Clocks



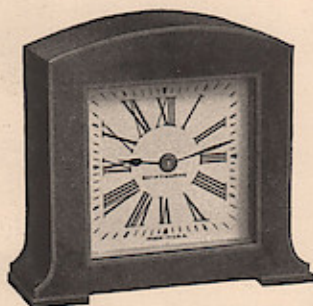
ELFIN

Mahogany. Swinging frame fitted with highest grade 7-jeweled No. 112 movement. Gold finished dial. Height 9½ inches. Base 10 inches.



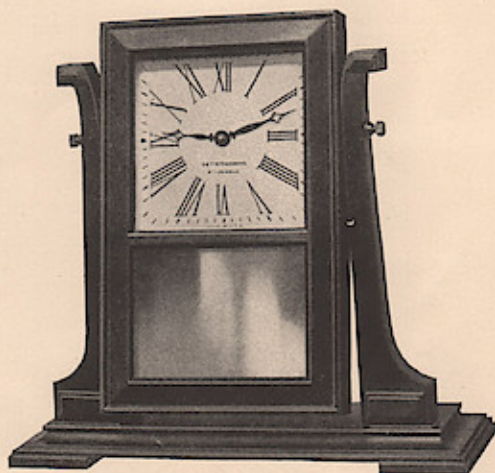
CARDIFF

Solid mahogany. Height 4½ inches. Base 4 inches. 2½ inch silvered dial. Fitted with 103-A, eight-day, 4-jeweled time movement.



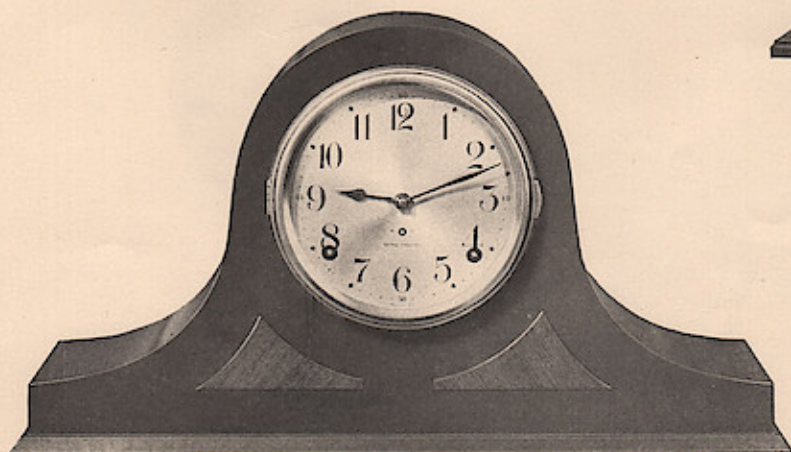
PETITE 4

Mahogany case with gold dial. Height 4¼ inches. Fitted with No. 102 one-day time movement.



VANITY

Mahogany. Swinging frame fitted with No. 103-A, 8-day, 4-jeweled time movement. Silver finished dial with mirror. Height 9¼ inches. Base 10 inches.

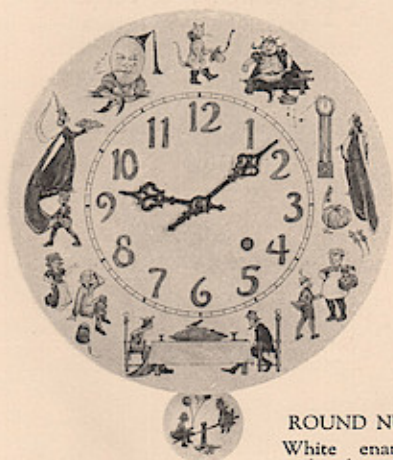


CYMBAL 6

Mahogany case. 5 inch silvered dial. Height 9¼ inches. Base 17½ inches. Sounds every quarter hour with gravity strike on two horizontal rods. New self-adjusting rack and snail movement.

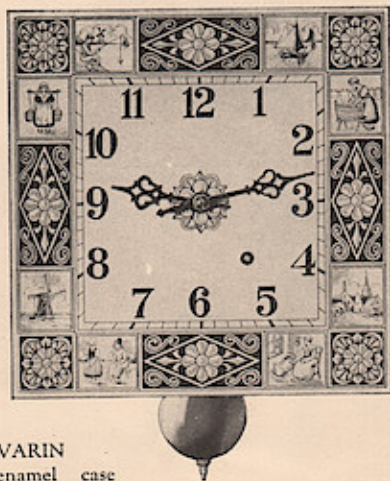
White Clocks

LAST year's addition of attractively designed hanging clocks to the Seth Thomas line proved that a considerable demand existed for *substantial* and *accurate* clocks of this type. These new models offer a wider variety for the kitchen, nursery, store or shop, in which white prevails.



ROUND NURSERY

White enamel case with decorations in four colors. 6 inch dial. Diameter $10\frac{1}{4}$ inches. Equipped with very accurate 8-day pendulum time movement No. 41.



SAVARIN

White enamel case with designs in blue. 6-inch dial. Over-all width 9 inches. Equipped with very accurate 8-day pendulum time movement No. 41.



WILLOW

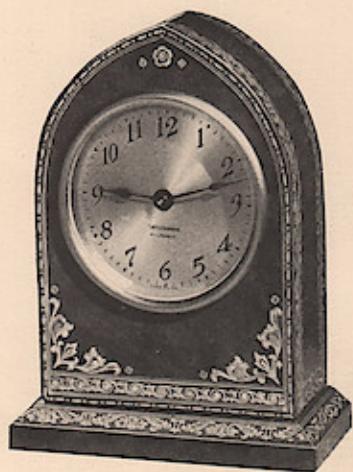
Round white enamel case with authentic Old English design. $7\frac{1}{2}$ inch dial. Diameter $10\frac{1}{4}$ inches. Equipped with very accurate 8-day pendulum time movement No. 41.

Windows App : Images To PDF Maker

Florentine Tooled Leather Desk and Boudoir Clocks

A VARIETY of colors—red, blue, green and brown—will make this new type of clock in leather of Florentine tooling the choice for modern gayly decorated boudoirs.

Color should be specified in ordering



LIDO

Florentine tooled leather case in blue, red, green, or brown, with 22 carat gold decorations. 3 inch silvered dial. Height 7 inches. Base 5 inches. Four-jeweled lever time movement No. 103-A.



TIVOLI

Florentine tooled leather case in blue, green or brown, with 22 carat gold decorations. 2 1/4 inch silvered dial. Height 5 1/2 inches. Base 4 1/2 inches. Four-jeweled lever time movement No. 103-A.



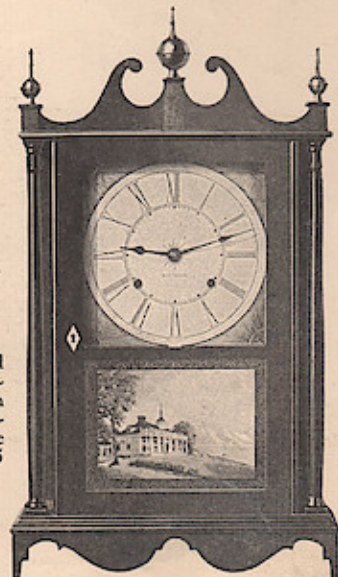
MILAN

Florentine tooled leather case in red or brown, with 22 carat gold decorations. 3 inch silvered dial. Height 5 1/4 inches. Base 5 1/4 inches. Four-jeweled lever time movement No. 103-A.

New England Shelf Clock

CAMBRIDGE

Mahogany. Hand painted dial and lower panel. Authentic reproduction of original Seth Thomas. 8-day, No. 89 movement. Hour and half hour strike on finely toned gong. Height 25 inches. Base 14 inches.





DuBARRY

Antique gold. 3 inch dial. Height 19 inches. 8-day, four-jeweled time movement No. 103-A.



LYRE

Antique gold. 3 inch dial. Height 21½ inches. 8-day, four-jeweled time movement No. 103-A.



DIANA

Antique gold on a blue base. 2½ inch dial. Height 14¼ inches. 8-day, four-jeweled time movement No. 103-A.

Decorative Hanging Clocks

THE decorative value of clocks is so widely appreciated today that attractive hanging models are desired for every type of room. In this group will be found a model that will prove adaptable to any interior.



DANTE

Antique gold with red base. 3 inch dial. Height 16 inches. 8-day, four-jeweled time movement No. 103-A.



DUCHESS

Old ivory finish with antique gold border. 3 inch dial. Height 9½ inches. 8-day, four-jeweled time movement No. 103-A.



DAUPHIN

Antique gold. 3 inch dial. Height 15¼ inches. 8-day, four-jeweled time movement No. 103-A.